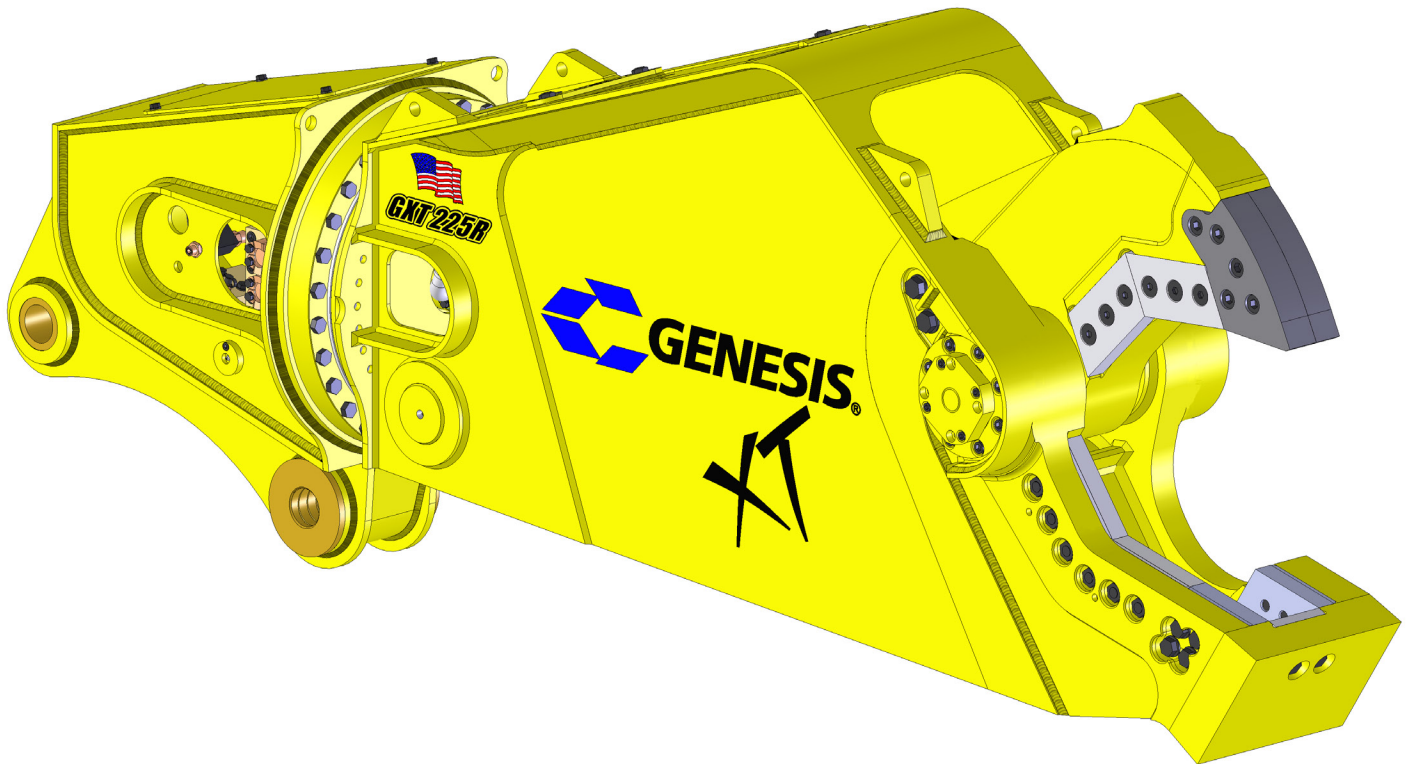


GXT 225R Mobile Shear

PARTS MANUAL



CONTACT INFORMATION

Genesis Attachments

1000 Genesis Drive
Superior, WI 54880 USA

Toll Free: 888-SHEAR-IT
(888-743-2748)

Phone: 715.395.5252

E-mail:
info@genesisattachments.com

Europe/Africa/Middle East Genesis GmbH

Teramostrasse 23
87700 Memmingen, Germany

Phone: +49 83 31 9 25 98 0
Fax: +49 83 31 9 25 98 80
genesis-europe.com

E-mail:
info@genesis-europe.com

Asia Pacific Representative Office

24 Upper Serangoon View #12-28
Singapore 534205

Phone: +65 9673 9730

E-mail:
tchoo@genesisattachments.com

Central America & Colombia

Cra 13A #89-38 / Ofi 613
Bogota, Colombia

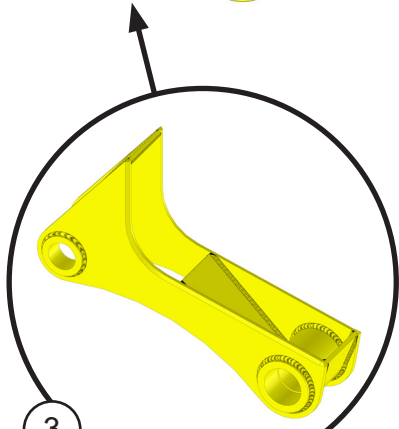
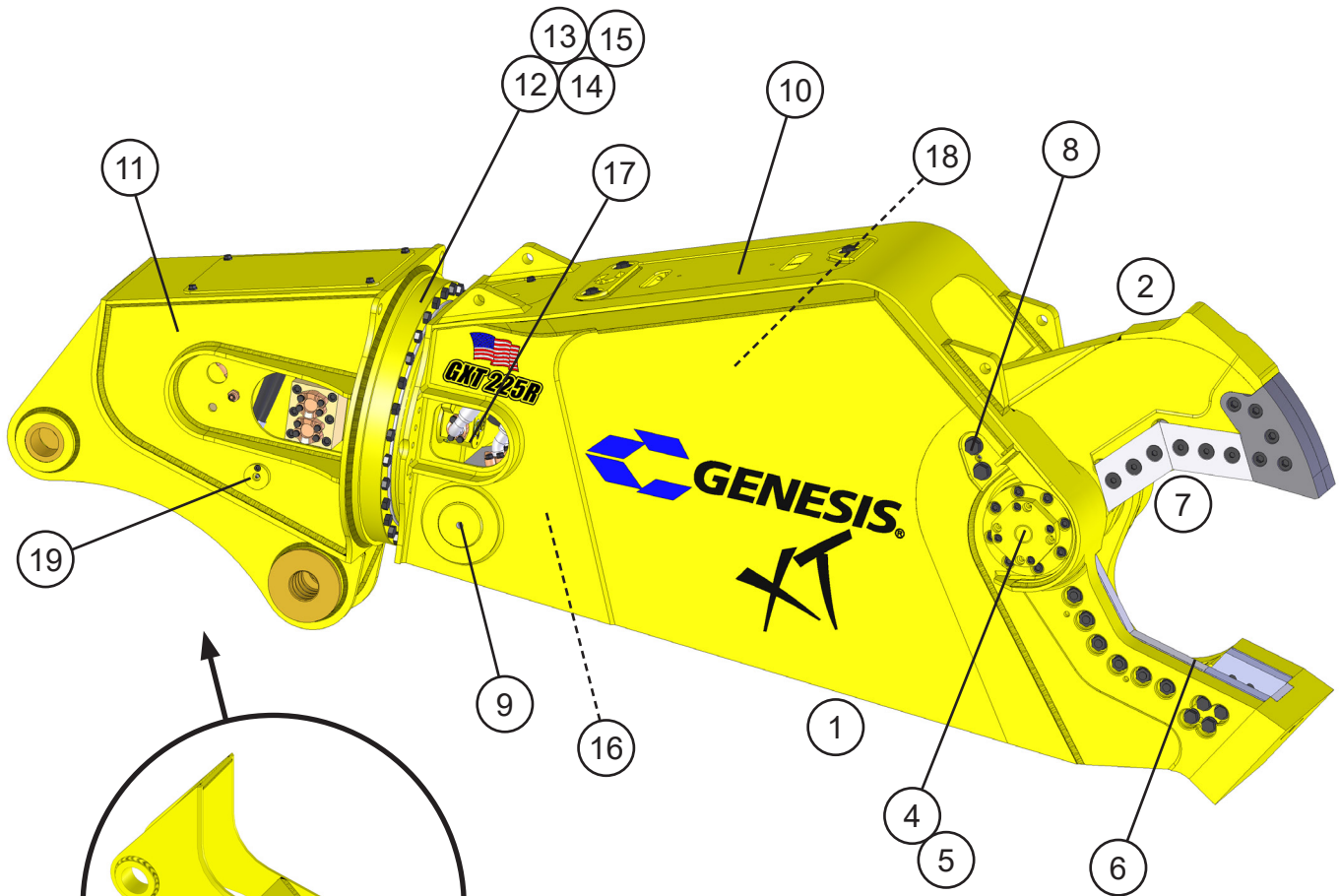
Phone: +57 1 610 8160 / 795 8747

E-mail:
contact@themsagroup.com

TABLE OF CONTENTS

CONTACT INFORMATION	2
CONTACT INFORMATION	2
GENERAL ARRANGEMENT	4
ASSEMBLY PIVOT GROUP - RIGHT SIDE	6
ASSEMBLY PIVOT GROUP - LEFT SIDE	8
ASSEMBLY LOWER BLADES	10
ASSEMBLY UPPER BLADES	12
ASSEMBLY AUTO GUIDE	14
ASSEMBLY CYLINDER PINS	16
ASSEMBLY ACCESS COVERS	18
ASSEMBLY UPPER HEAD	20
ASSEMBLY ROTATION	22
ASSEMBLY ROTATION CIRCUIT	24
SUB-ASSEMBLY ROTATE CROSS-OVER / C' BAL	26
SUB-ASSEMBLY LINE MOUNT MANIFOLD	28
ASSEMBLY OPEN AND CLOSE CIRCUIT	30
ASSEMBLY SWIVEL MANIFOLD	32
REGEN BLOCK SUB-ASSEMBLY	34
ASSEMBLY SLEWING RING LUBRICATION	36
BOLT TORQUE SPECIFICATIONS	38
THREAD TREATMENT DIAGRAM	39
Mobile Shears.....	39
PROCEDURES	40
Cleaning.....	40
Threadlocker.....	40
Anti-Seize.....	41
No Thread Treatment.....	41
BOLT TORQUE SPECIFICATIONS	42
Dry Torque Values.....	42
Wet Torque Values.....	42
O-RING BOSS & FLAT FACE O-RING TORQUE SPECIFICATIONS	43
BOLT DRIVE SPECIFICATIONS	44
WARRANTY	45
Claim Procedure.....	45
Blade Warranty.....	45
PARTS ORDER POLICY AND PROCEDURE	46
Parts Orders Should Include.....	46
Placing Orders.....	46
Part Numbers.....	46
Shipping.....	46
Invoices.....	46
Returns.....	46
Warranty Returns.....	46
PARTS ORDER FORM	47
INDEX	48
CONTACT INFORMATION	50

GENERAL ARRANGEMENT



3 **Wtmg Lug Upper Head**
 Part Number is Serial Number specific.
 For replacement parts call the Genesis
 Parts Department.

USA	Europe
715-395-5614	+49 83 31 9 25 98 0
715-395-3405	



Serial Number Location
 Facing the left side of shear,
 lower right corner.

GENERAL ARRANGEMENT

ITEM	QTY	PART NUMBER	DESCRIPTION
1	1	1105374	Wtmg Stick
2	1	1105352	Wtmg Upper
3		*	Wtmg Lug Upper Head
4		See page 6	Assembly Pivot Group - Right Side
5		See page 8	Assembly Pivot Group - Left Side
6		See page 10	Assembly Lower Blades
7		See page 12	Assembly Upper Blades
8		See page 14	Assembly Auto Guide
9		See page 16	Assembly Cylinder Pins
10		See page 18	Assembly Access Covers
11		See page 20	Assembly Upper Head
12		See page 22	Assembly Rotation
13		See page 24	Assembly Rotation Circuit
14		See page 26	Sub-Assembly Rotate Cross-over / C'bal
15		See page 28	Sub-Assembly Line Mount Manifold
16		See page 30	Assembly Open and Close Circuit
17		See page 32	Assembly Swivel Manifold - Top/Bottom Ported
18		See page 34	Sub-Assembly Regen Block
19		See page 36	Assembly Slewing Ring Lubrication

* Part number is Serial Number specific. For replacement parts call the Genesis Parts Department.

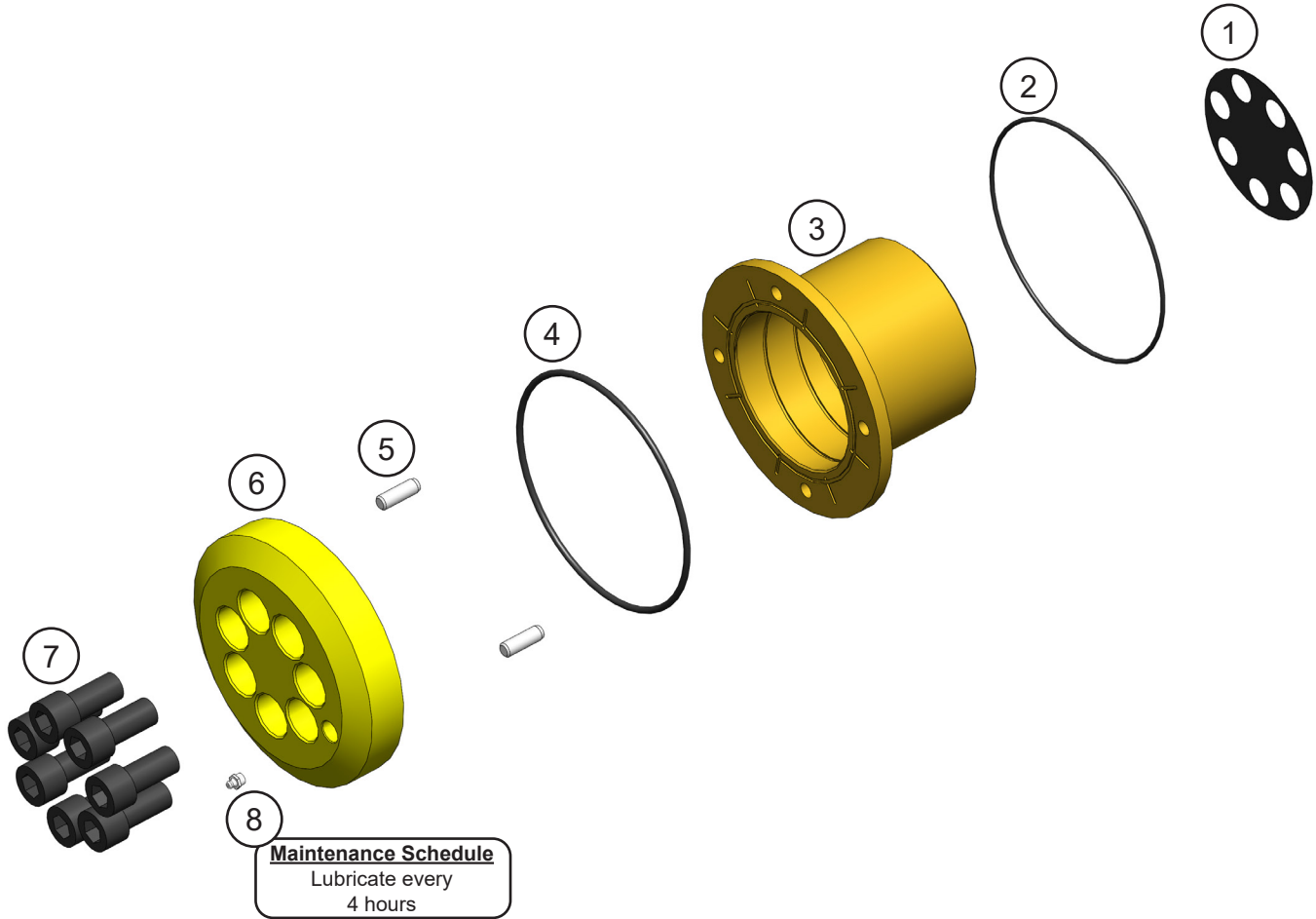
USA

715-395-3488

Europe

+49 83 31 9 25 98 0

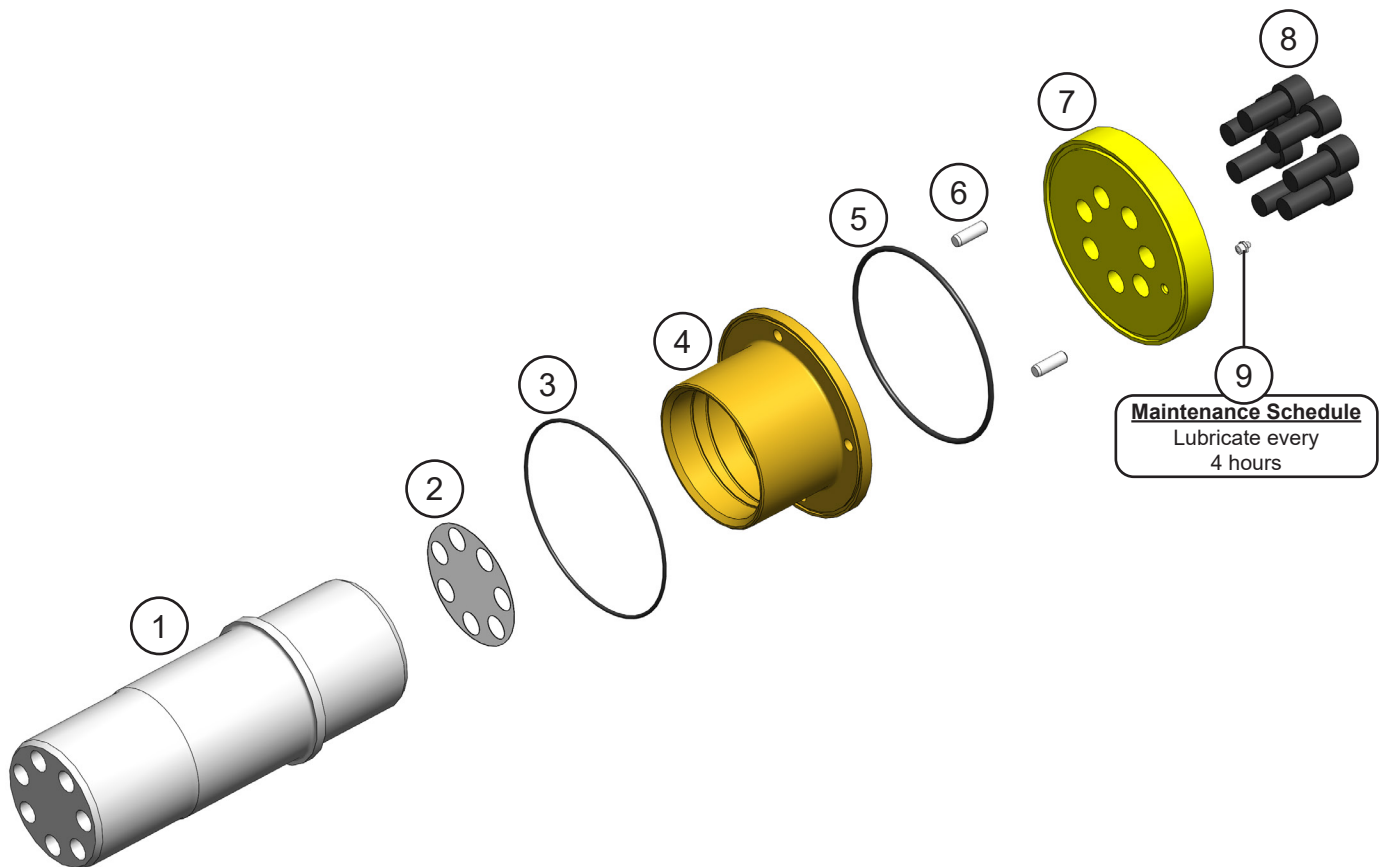
ASSEMBLY PIVOT GROUP - RIGHT SIDE



ASSEMBLY PIVOT GROUP - RIGHT SIDE

ITEM	QTY	PART NUMBER	DESCRIPTION
1	1	1105385	Shim Set Main Shaft
2	1	S0190267	O-Ring
3	1	1105382	Mach Bearing RH
4	1	S0190369	O-Ring
5	2	6300134	Dowel Pin
6	1	1105386	Mach End Cap
7	7	F0624050	Socket Head Capscrew M24 x 3.00 x 50
8	1	6200002	Grease Fitting

ASSEMBLY PIVOT GROUP - LEFT SIDE



ASSEMBLY PIVOT GROUP - LEFT SIDE

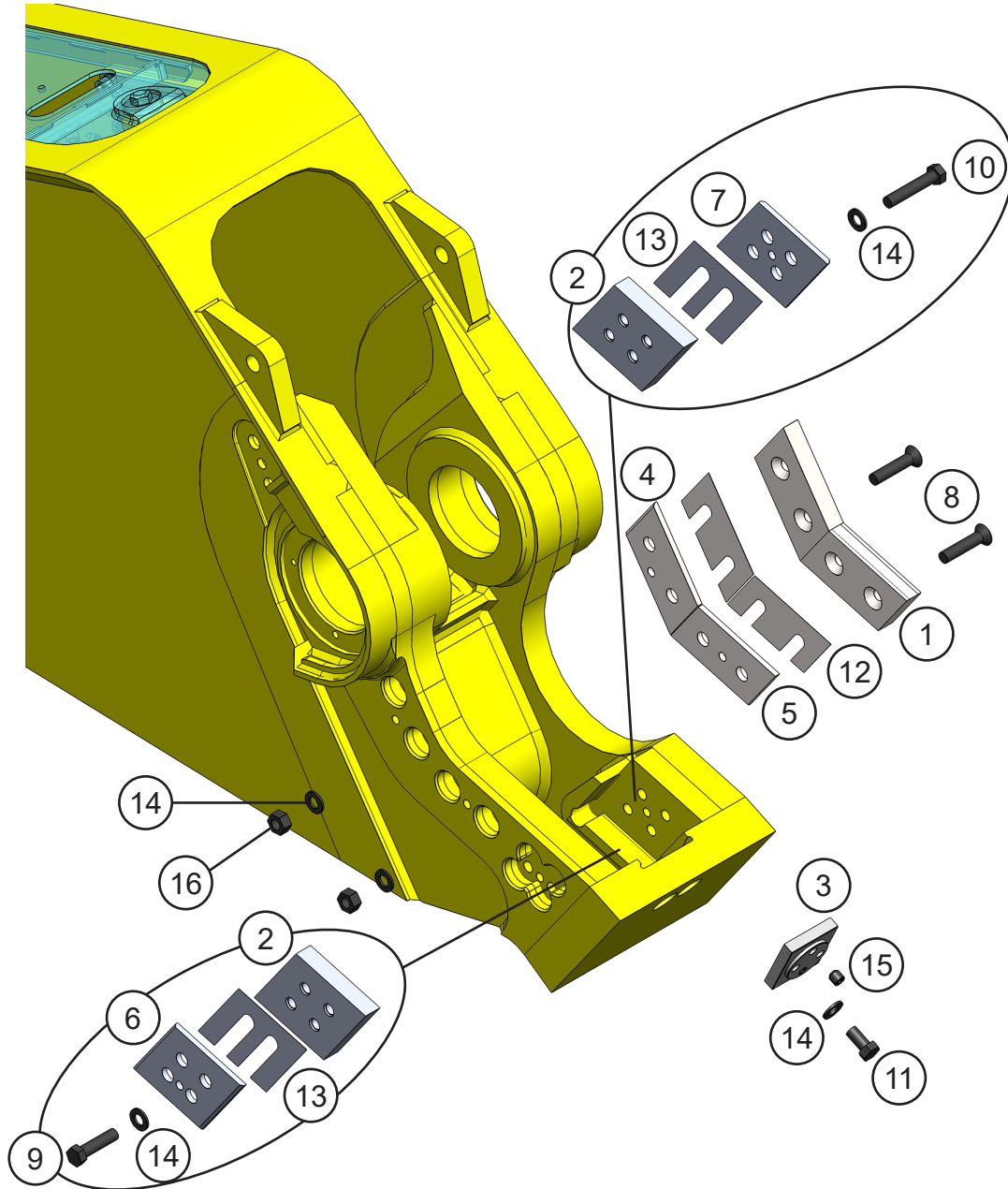
ITEM	QTY	PART NUMBER	DESCRIPTION
1	1	*	Mach Main Shaft
2	1	1105385	Shim Set Main Shaft
3	1	S0190267	O-Ring
4	1	1105383	Mach Bearing LH
5	1	S0190369	O-Ring
6	2	6300134	Dowel Pin
7	1	1105386	Mach End Cap
8	7	F0624050	Socket Head Capscrew M24 x 3.00 x 50
9	1	6200002	Grease Fitting

* Part number is Serial Number specific. For replacement parts call the Genesis Parts Department.

USA
715-395-3488

Europe
+49 83 31 9 25 98 0

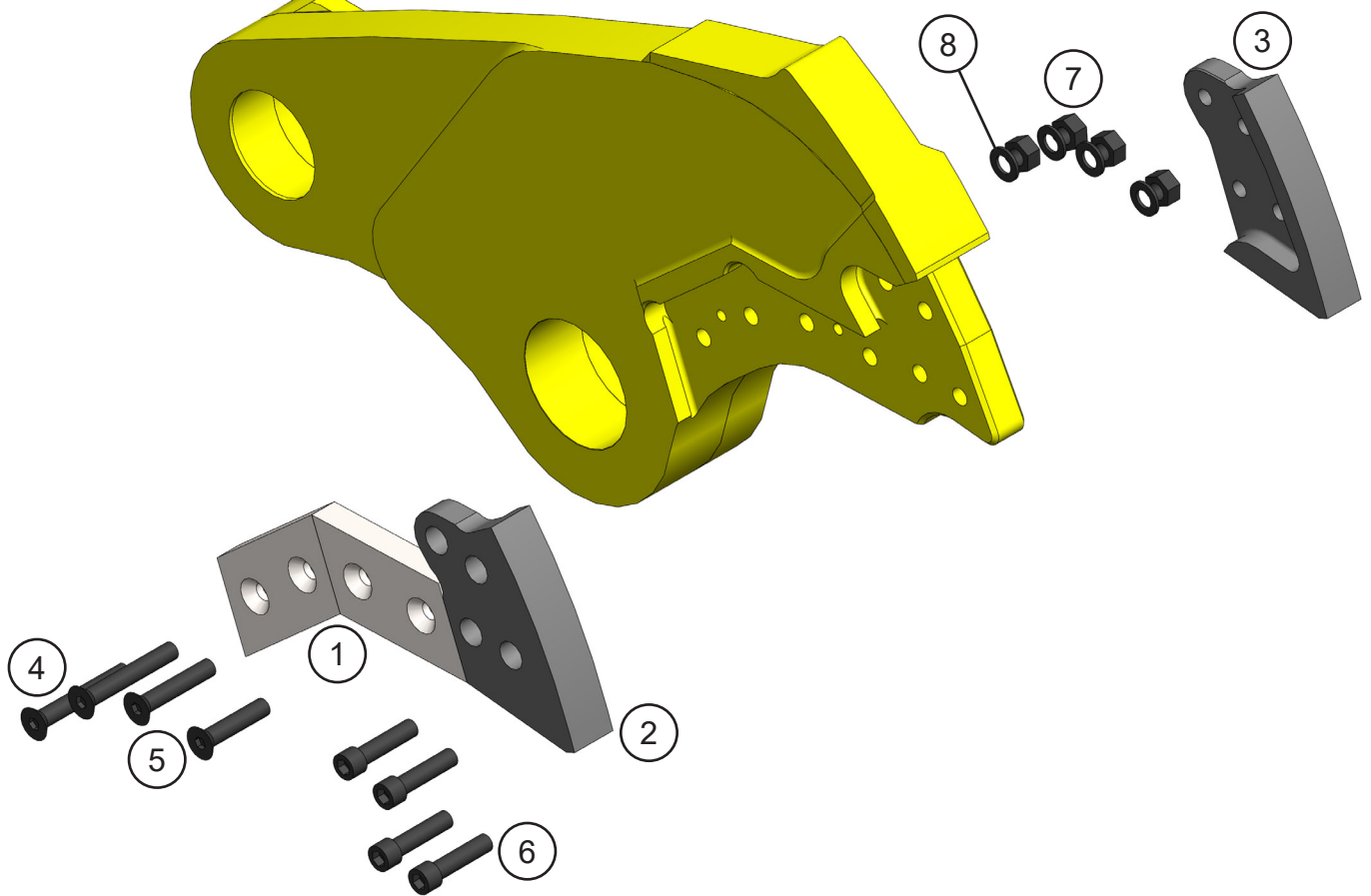
ASSEMBLY LOWER BLADES



ASSEMBLY LOWER BLADES

ITEM	QTY	PART NUMBER	DESCRIPTION
1	2	4500397	Mach Blade
2	2	1105387	Mach Blade Guide
3	1	4500399	Mach Blade Razor
4	1	1105377	Mach Adjust Plate - Primary
5	1	1105378	Mach Adjust Plate - Secondary
6	1	1105379	Mach Guide Blade Adjust Plate
7	1	1105380	Mach Guide Blade Adjust Plate
8	4	F0575350	Flat Head Capscrew $\frac{3}{4}$ - 10 x $3\frac{1}{2}$
9	4	F0275300	Hex Head Capscrew $\frac{3}{4}$ - 10 x 3
10	4	F0275400	Hex Head Capscrew $\frac{3}{4}$ - 10 x 4
11	2	F0275150	Hex Head Capscrew $\frac{3}{4}$ - 10 x $1\frac{1}{2}$
12	1	1105459	Shim Set - Blade
13	2	1105458	Shim Set - Guide Blade
14	14	F1300075	Flat Washer Narrow $\frac{3}{4}$
15	2	F2575075	Set Screw Socket Head $\frac{3}{4}$ - 10 X $\frac{3}{4}$
16	4	F0907510	Hex Head Nut $\frac{3}{4}$ - 10

ASSEMBLY UPPER BLADES

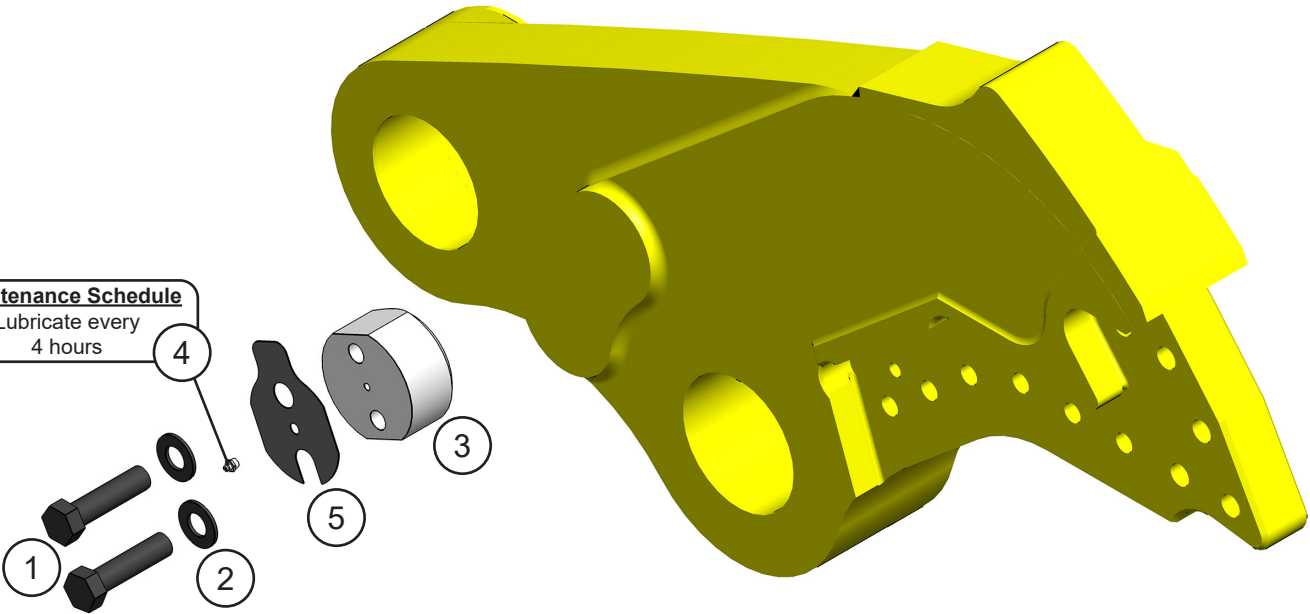


ASSEMBLY UPPER BLADES

ITEM	QTY	PART NUMBER	DESCRIPTION
1	2	4500397	Mach Blade
2	1	1105375	Mach Blade Tip Right
3	1	1105376	Mach Blade Tip Left
4	2	F0575500	Flat Head Capscrew $\frac{3}{4}$ - 10 x 5
5	2	F0575350	Flat Head Capscrew $\frac{3}{4}$ - 10 x 3 $\frac{1}{2}$
6	4	F0775300	Mach Bolt Socket Head Capscrew $\frac{3}{4}$ - 10 x 3
7	4	F0907510	Hex Head Nut $\frac{3}{4}$ - 10
8	4	F1300075	Flat Washer Narrow $\frac{3}{4}$

ASSEMBLY AUTO GUIDE

Maintenance Schedule
Lubricate every
4 hours



ASSEMBLY AUTO GUIDE

ITEM	QTY	PART NUMBER	DESCRIPTION
1	2	F0210400	Hex Head Capscrew 1 - 8 x 4
2	2	F1300100	Flat Washer Narrow 1"
3	1	*	Mach Auto Guide
4	1	6200002	Grease Fitting
5		1106478	Shim Set, Auto Guide

* Part number is Serial Number specific. For replacement parts call the Genesis Parts Department.

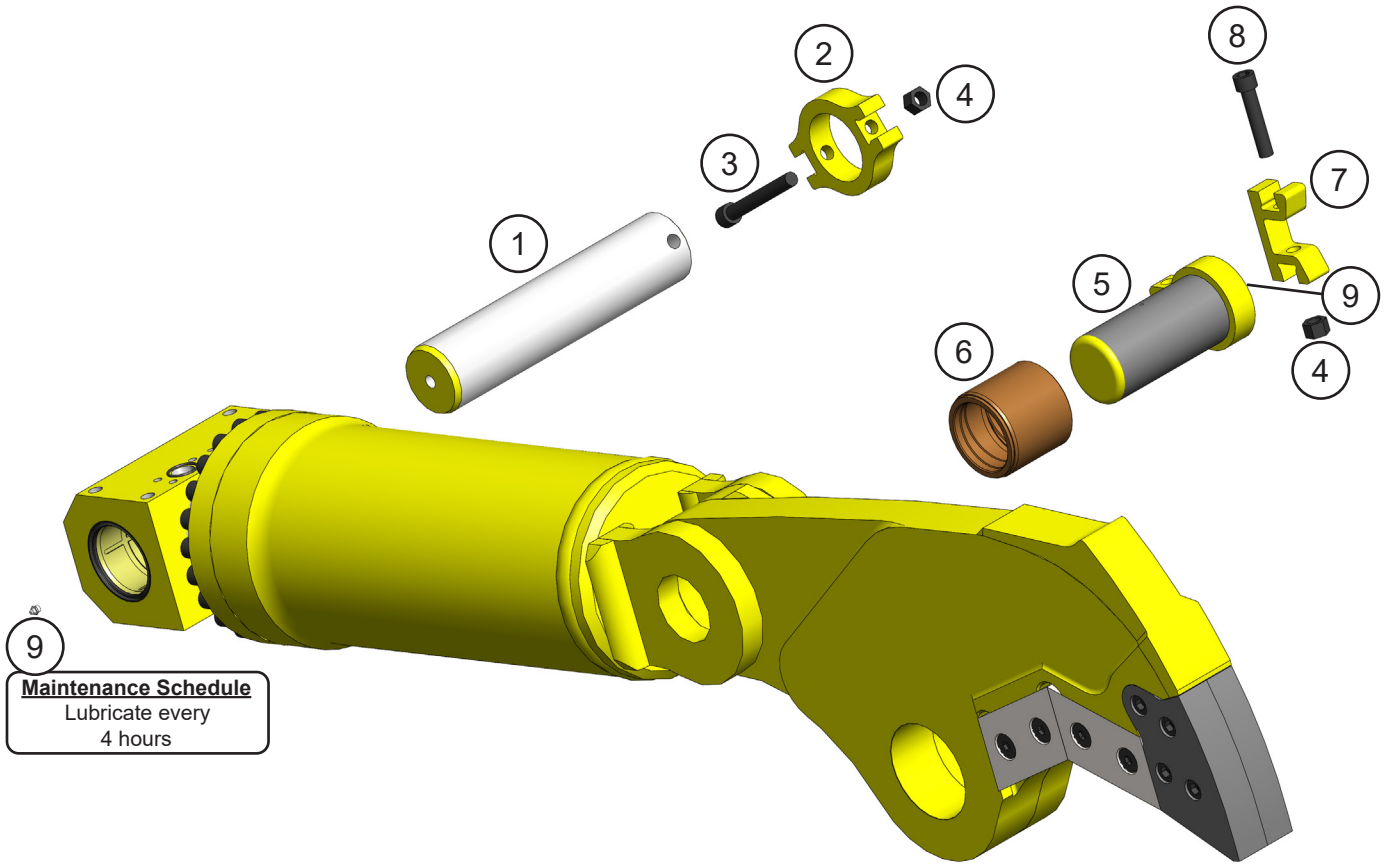
USA

715-395-3488

Europe

+49 83 31 9 25 98 0

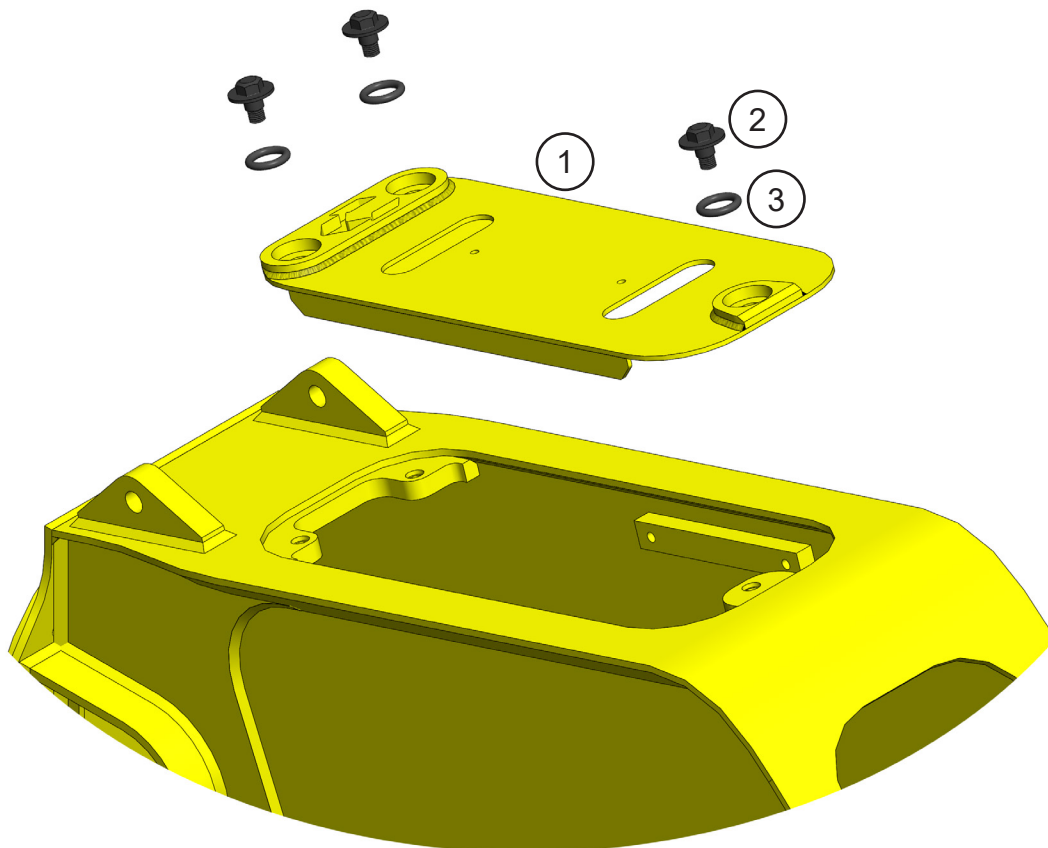
ASSEMBLY CYLINDER PINS



ASSEMBLY CYLINDER PINS

ITEM	QTY	PART NUMBER	DESCRIPTION
1	1	1105457	Mach Rear Cyl Pin
2	1	3500309	Mach Pin Keeper Rear
3	1	F0620160	Socket Head Capscrew M20 x 2.50 x 160
4	2	F1020250	Nylock Hex Nut M20 x 2.50
5	1	3500345	Wldt Front Cyl Pin
6	1	1105456	Mach Bearing Upper Cylinder Connection
7	1	3500350	Mach Pin Keeper (Clevis)
8	1	F0620100	Socket Head Capscrew M20 x 2.50 x 100
9	2	6200002	Grease Fitting

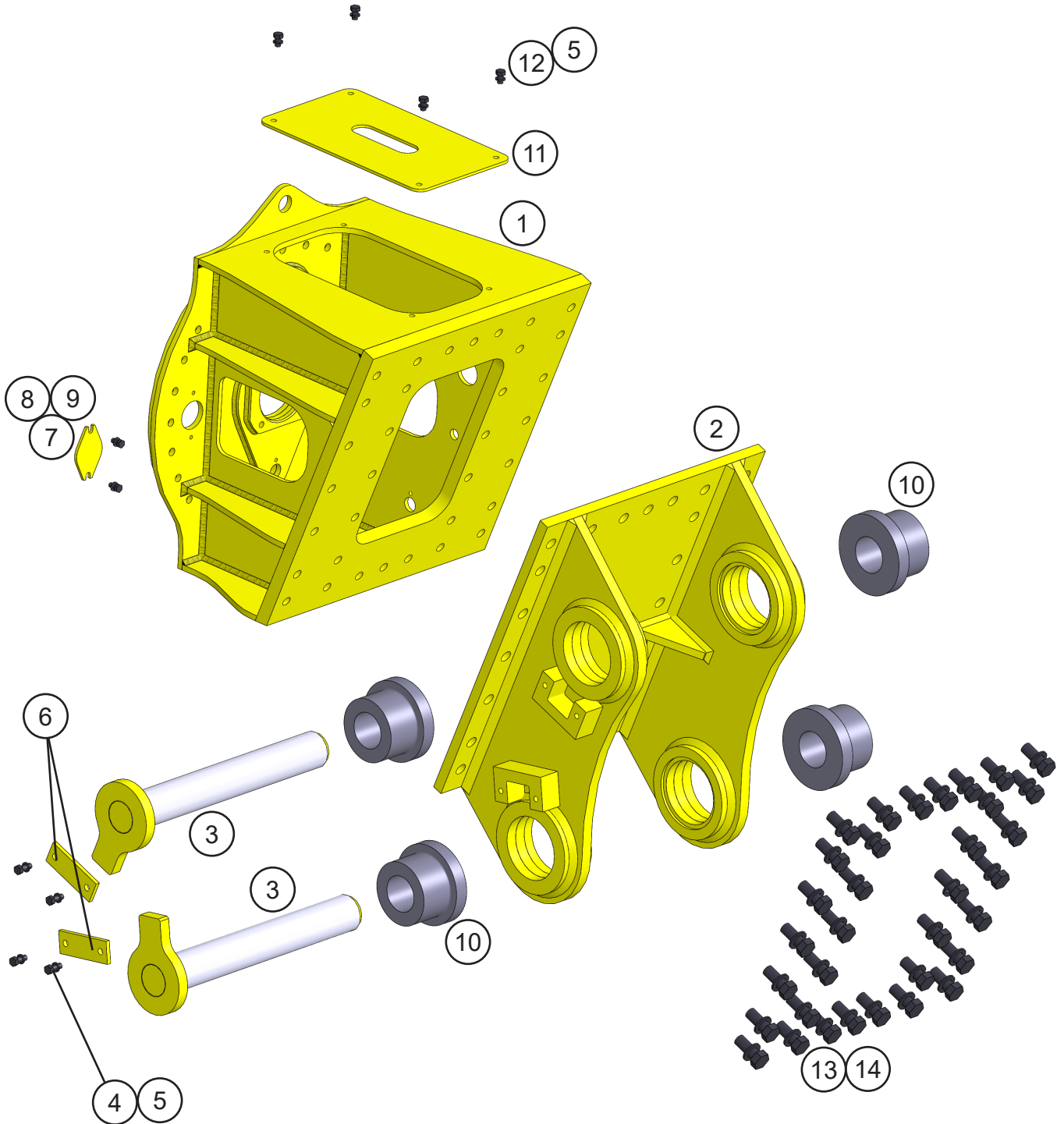
ASSEMBLY ACCESS COVERS



ASSEMBLY ACCESS COVERS

ITEM	QTY	PART NUMBER	DESCRIPTION
1	1	1108991	Wldt Cover
2	3	1105854	Mach Flange Shoulder Bolt
3	3	6301112	O-Ring

ASSEMBLY UPPER HEAD



ASSEMBLY UPPER HEAD

ITEM	QTY	PART NUMBER	DESCRIPTION
1	1	5513784	Wtmg Sub Head
2	1	*	Wtmg Lug Upper Head
3	2	*	Wldt Pin
4	4	F0112030	Hex Head Capscrew M12 x 1.75 x 30
5	8	F1401200	Lock Washer M12
6	2	5500752	Plt Strap
7	2	5513798	Plt Bolt Cover
8	4	F0110020	Hex Head Capscrew M10 x 1.50 x 20
9	4	F1201021	Flat Washer M10
10	4	*	Mach Spacer Sleeve
11	1	5513799	Wtmg Sub Head Cover
12	4	F0112020	Hex Head Capscrew M12 x 1.75 x 20
13	34	F0124060	Hex Head Capscrew M24 X 3 X 60
14	34	F1202444	Flat Washer M24

* Part Numbers are Serial Number specific. For replacement parts call the Genesis Parts Department.

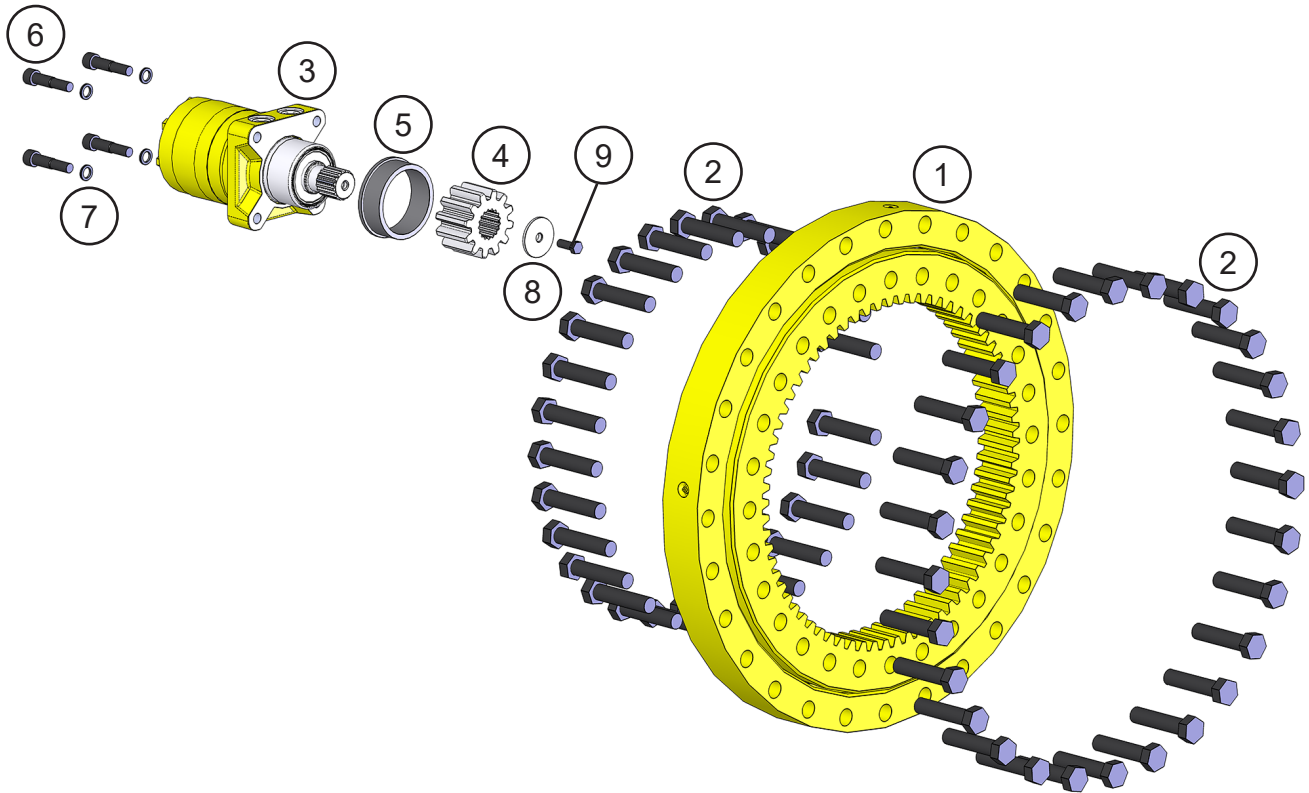
USA

715-395-3488

Europe

+49 83 31 9 25 98 0

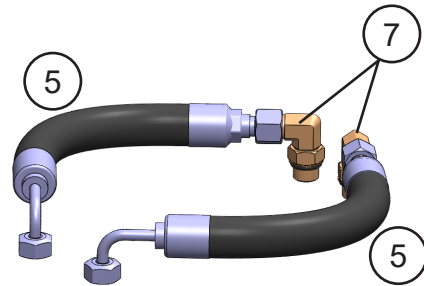
ASSEMBLY ROTATION



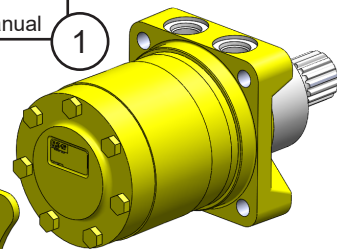
ASSEMBLY ROTATION

ITEM	QTY	PART NUMBER	DESCRIPTION
1	1	6100397	Bearing Slewing
2	56	F0120090	Hex Head Capscrew M20 x 2.50 x 90
3	1	6380082	Motor
4	1	3101225	Pinion
5	1	1107014	Mach Spacer
6	4	1108183	Mach Bolt Socket Head Capscrew
7	4	F1900050	Washer Nord Lock
8	1	3101226	Mach Washer Motor Pinion
9	1	F0238100	Hex Head Capscrew $\frac{3}{8}$ - 16 x 1

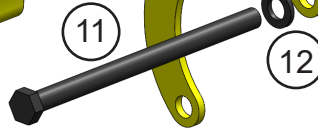
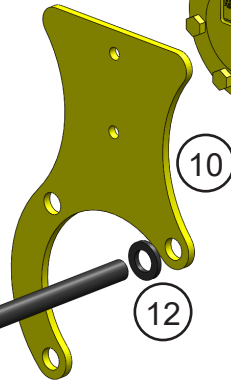
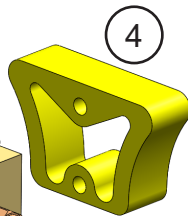
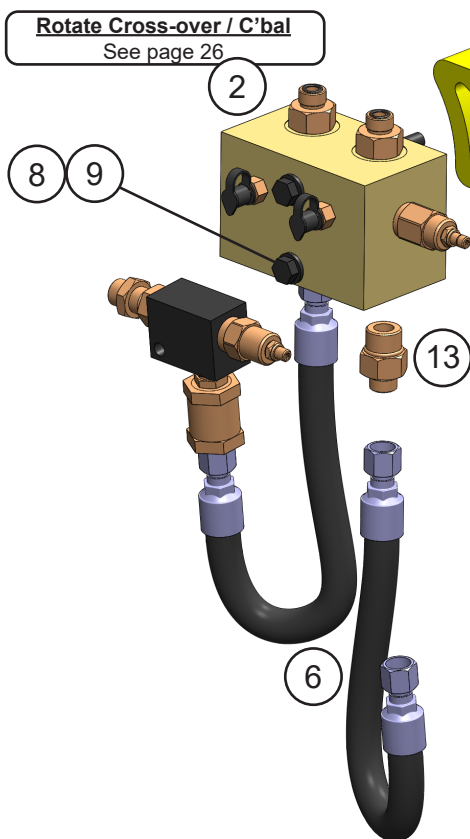
ASSEMBLY ROTATION CIRCUIT



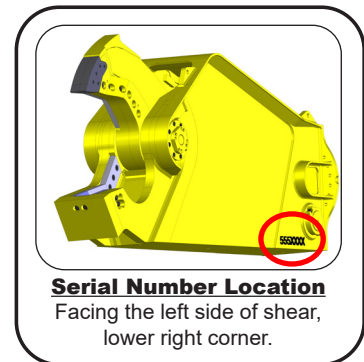
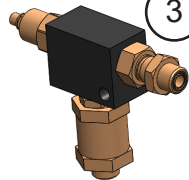
Rotator Installation
See Safety and Operator's Manual



Rotate Cross-over / C'bal
See page 26



Line Mount Manifold
See page 28

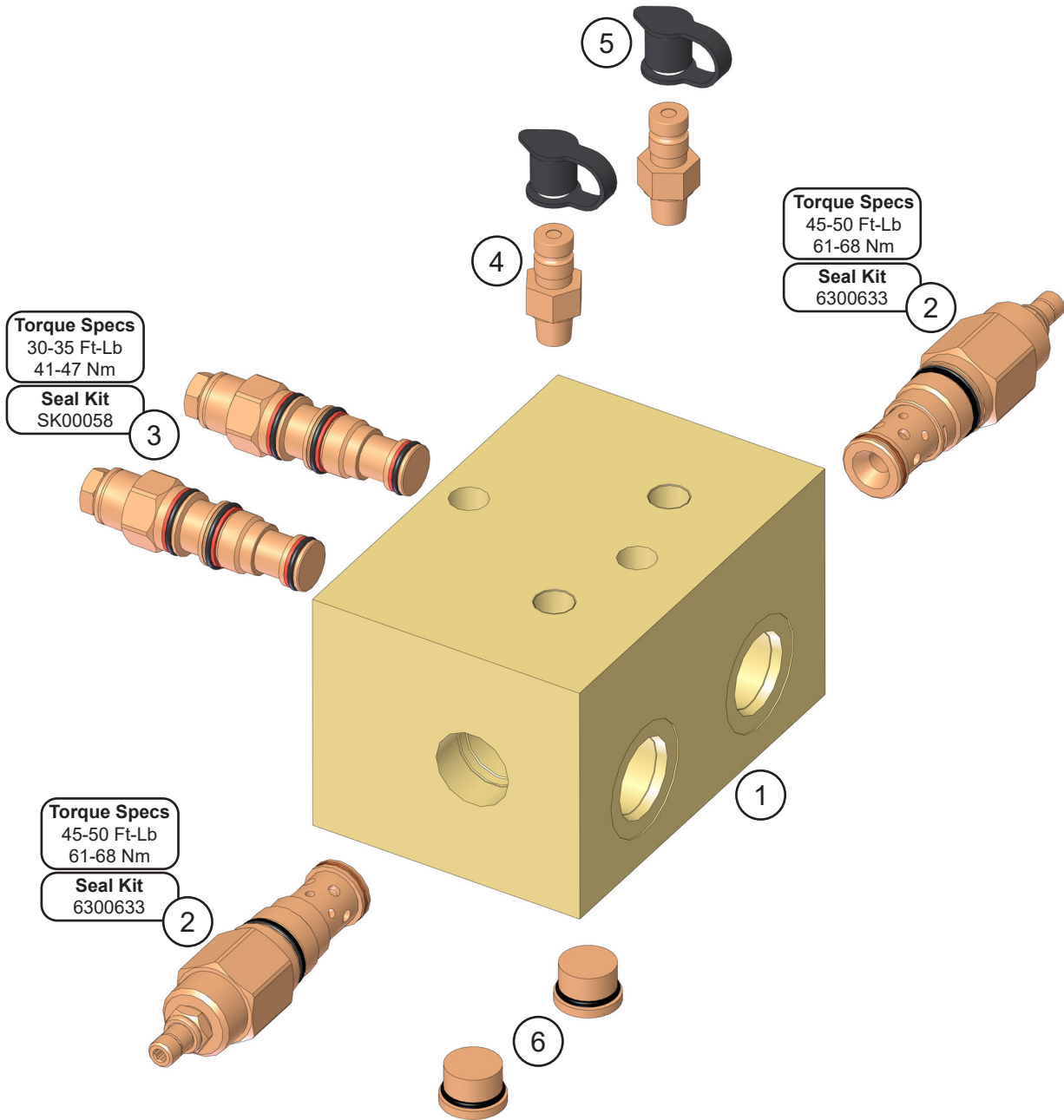


Serial Number Location
Facing the left side of shear,
lower right corner.

ASSEMBLY ROTATION CIRCUIT

ITEM	QTY	PART NUMBER	DESCRIPTION
1	1	See page 22	Assembly Rotation
2	1	See page 26	Sub-Assembly Rotate Cross-over / C'bal
3	2	See page 28	Sub-Assembly Line Mount Manifold
4	1	3501912	Mach Spacer - Rotate Valve
5	2	1105551	Hose
6	2	1105552	Hose
7	2	6300305	Adaptor 10MB-08MFFOR90
8	2	F0112140	Hex Head Capscrew M12 x 1.75 x 140
9	2	F1201224	Flat Washer M12
10	1	3503361	Mach Bracket - Motion Control
11	4	F0116240	Hex Head Capscrew M16 x 2.0 x 240
12	4	F1900063	Washer Nord Lock
13	4	6300052	Adaptor 12MB-08MO

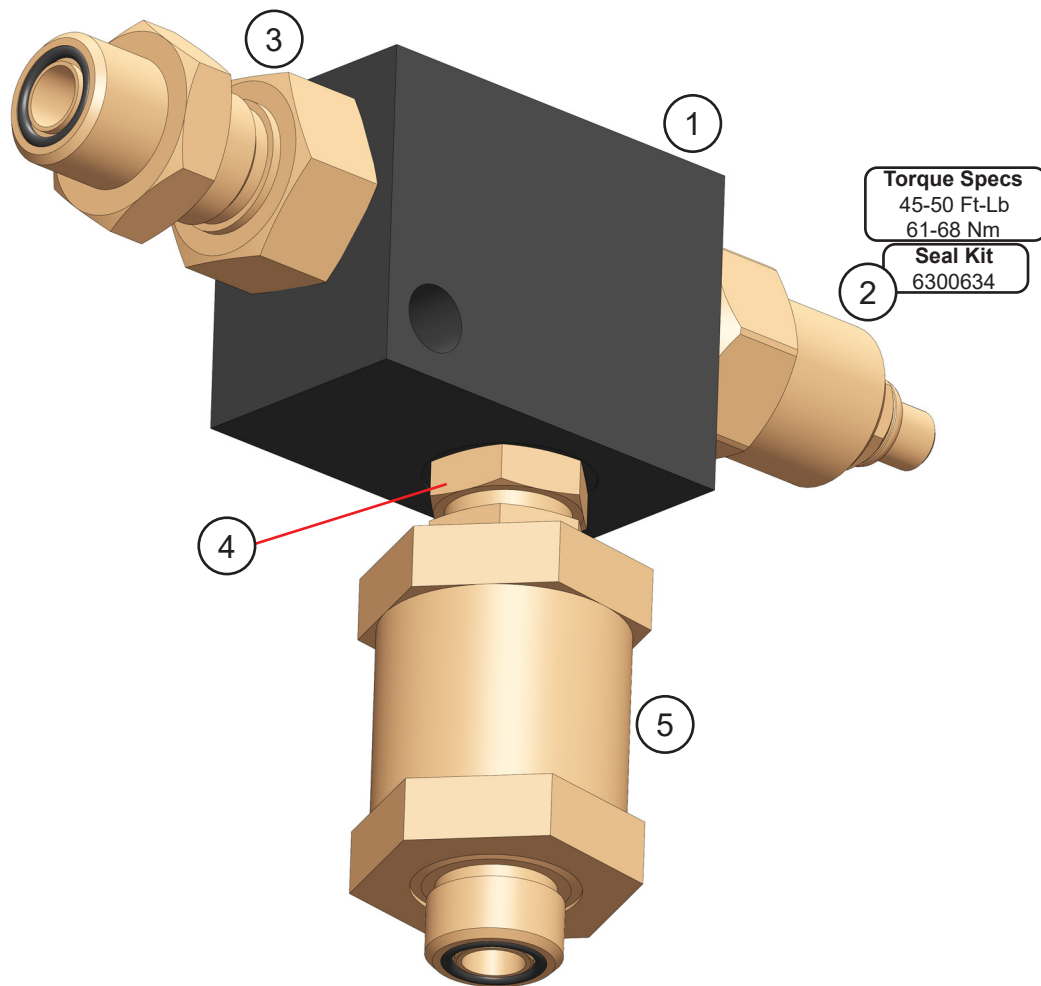
SUB-ASSEMBLY ROTATE CROSS-OVER / C'BAL



SUB-ASSEMBLY ROTATE CROSS-OVER / C'BAL

ITEM	QTY	PART NUMBER	DESCRIPTION
1	1	6360010	Valve Block
2	2	6301673	Valve Relief Seal Kit 6300633
3	2	6380035	Valve Counterbalance Seal Kit SK00058
4	2	6300088	Diagnostic Nipple 04MP
5	2	6310001	Diagnostic Nipple Dust Cap
6	2	6300054	Plug Socket Head 08MB

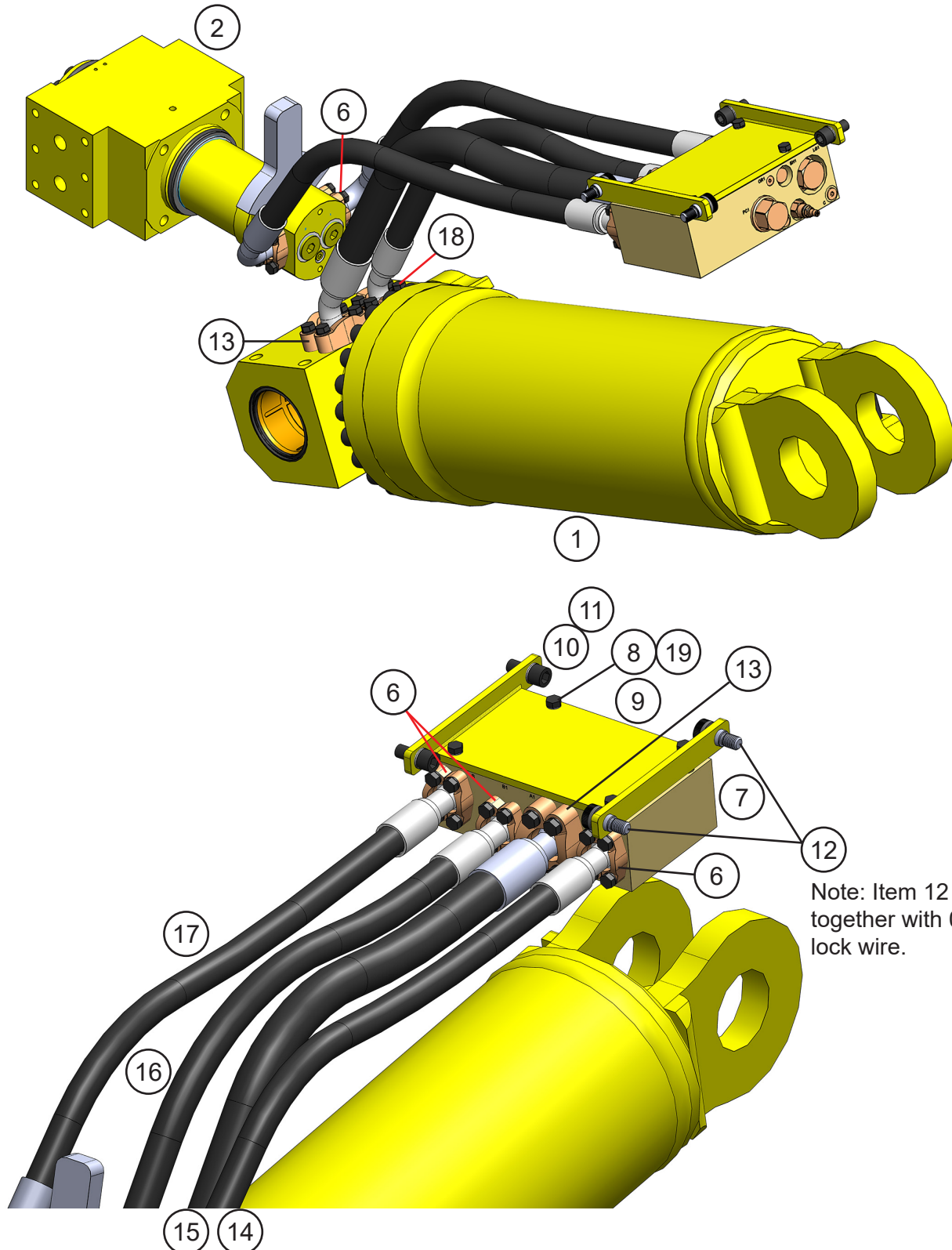
SUB-ASSEMBLY LINE MOUNT MANIFOLD



SUB-ASSEMBLY LINE MOUNT MANIFOLD

ITEM	QTY	PART NUMBER	DESCRIPTION
1	1	6300609	Valve Line Body
2	1	6300361	Valve Flow Control Seal Kit 6300634
3	1	6300497	Adaptor Bulkhead 08MB-08MO
4	1	6310183	Adaptor 08MB-08MB
5	1	6300364	Filter

ASSEMBLY OPEN AND CLOSE CIRCUIT



Note: Item 12 is tied together with 0.032 lock wire.

ASSEMBLY OPEN AND CLOSE CIRCUIT

ITEM	QTY	PART NUMBER	DESCRIPTION
1	1	*	Assembly Cylinder B10.0 R7.0 S21.25
2	1	See page 32	Assembly Swivel Manifold
3	2	*	Mach Port Block (Not Shown)
4	12	*	Socket Head Capscrew (Not Shown)
5	4	*	O-Ring (Not Shown)
	5	1" Split Flange Kit - Code 61	
6	2	H0261100	Split Flange Half 1.00 Code 61
	4	F0110035	Hex Head Capscrew M10 x 2.00 x 60
	4	F1401000	Lock Washer M10
	1	S0190219	O-Ring
7	1	See page 34	Valve Regen
8	4	F0110030	Hex Head Capscrew M10 x 1.5 x 30
9	1	1105388	Mach Valve Tray
10	2	F0616035	Socket Head Capscrew M16 x 2 x 35
11	2	F1900063	Washer Nord Lock
12	2	F3616020	Socket Head Shoulder Screw M16 x 2 x 20
	2	1-1/4" Split Flange Kit - Code 62	
13	2	H0262125	Split Flange Half 1.25 Code 62
	4	F0112050	Hex Head Capscrew M12 x 1.75 x 50
	4	F1401200	Lock Washer M12
	1	S0190222	O-Ring
14	1	1106902	Hose
15	1	1106899	Hose
16	1	1106900	Hose
17	1	1106901	Hose
	5	1" Split Flange Kit - Code 62	
18	2	H0262100	Split Flange Half 1.00 Code 62
	4	F0112040	Hex Head Capscrew M12 x 1.75 x 40
	4	F1401200	Lock Washer M12
	1	S0190219	O-Ring
19	4	F1900040	Washer Nord Lock

* Part numbers are Serial Number specific. For replacement parts call the Genesis Parts Department.

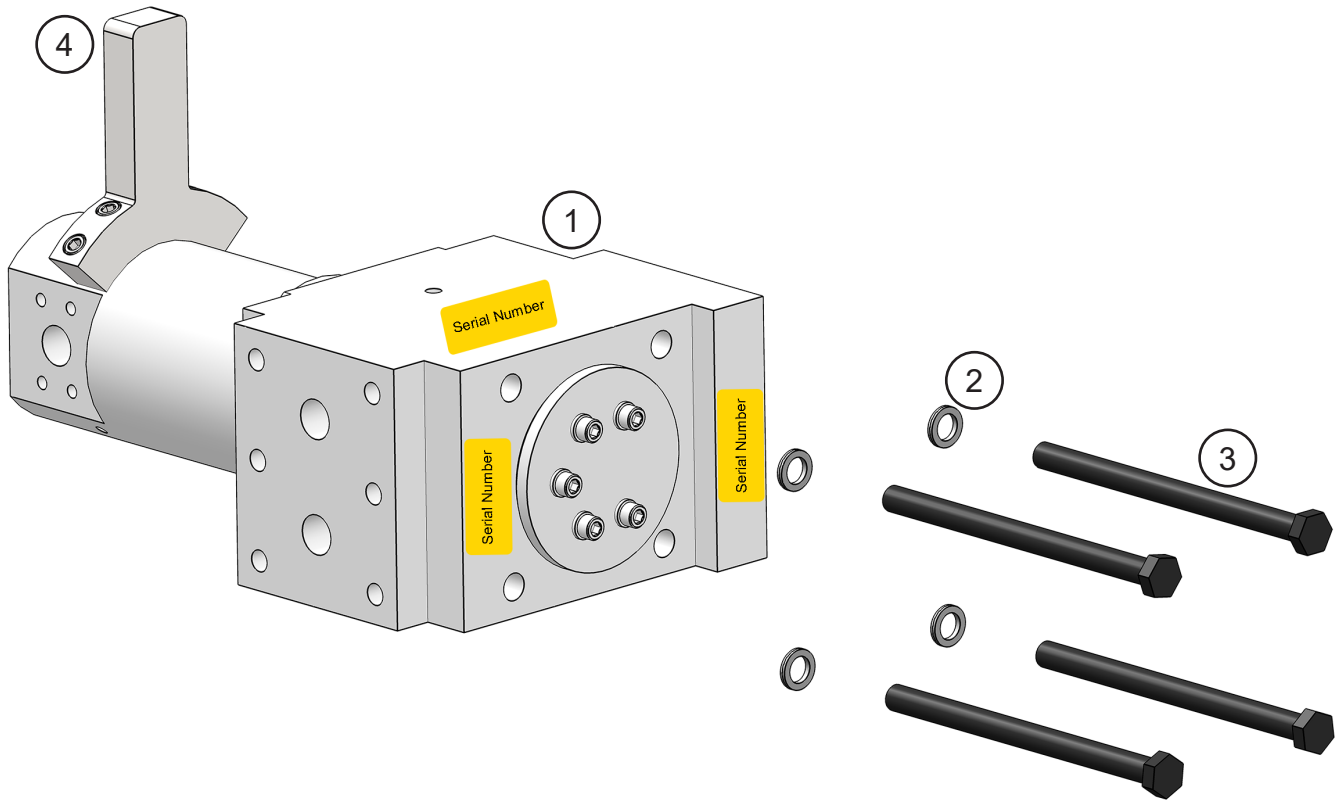
USA

715-395-3488

Europe

+49 83 31 9 25 98 0

ASSEMBLY SWIVEL MANIFOLD



ASSEMBLY SWIVEL MANIFOLD

ITEM	QTY	PART NUMBER	DESCRIPTION
1	1	*	Assembly Swivel Manifold
2	4	F1900063	Wedge Lock Washer 5/8
3	4	F0116240	Hex Head Capscrew M16 x 2.0 x 240
4	1	*	Torque Arm Kit

* Part numbers are Serial Number specific.

For replacement parts and seal kit, call the Genesis Parts Department.

The swivel Serial Number, located in one of the three highlighted areas, is required for **any** parts order.

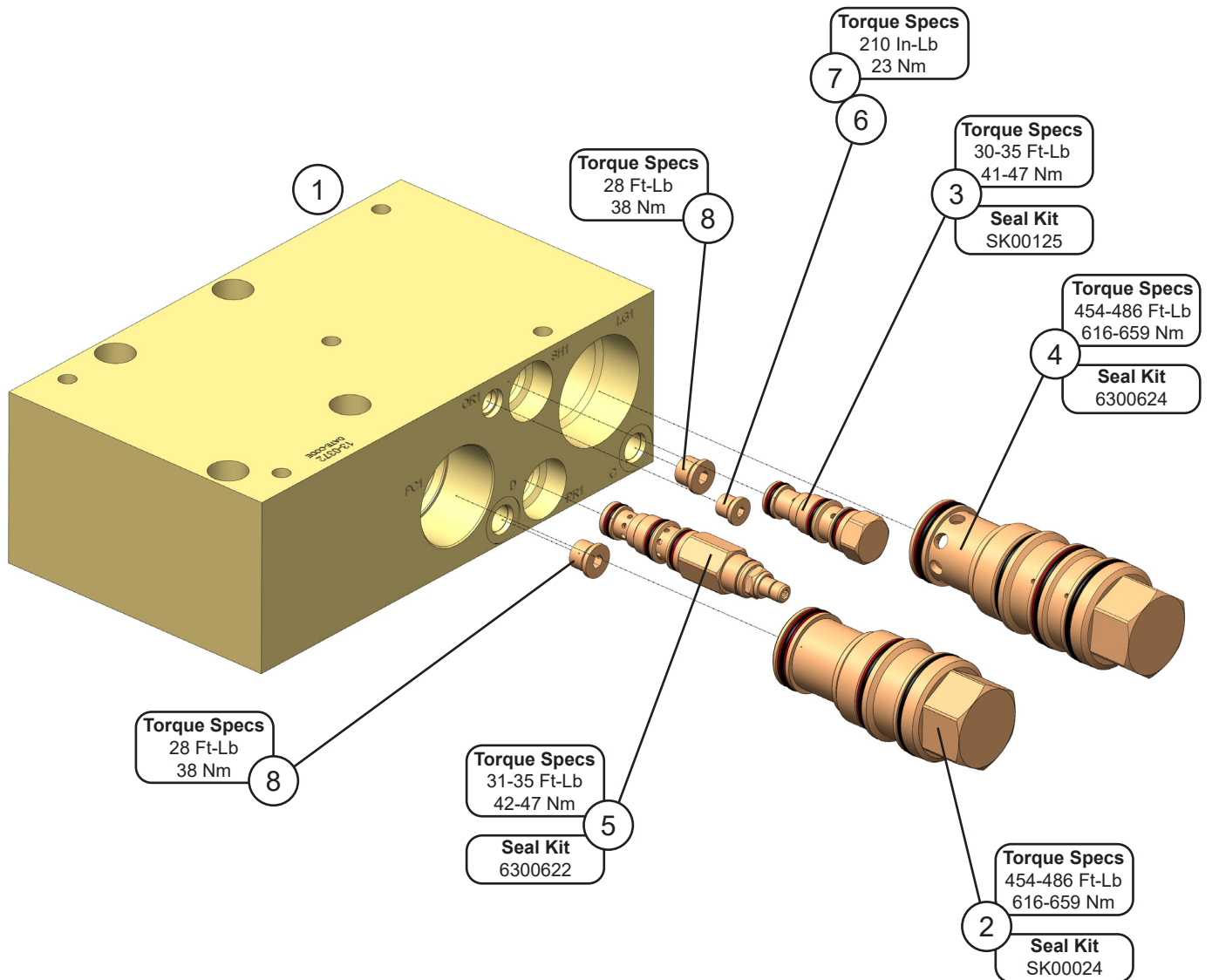
USA

715-395-3488

Europe

+49 83 31 9 25 98 0

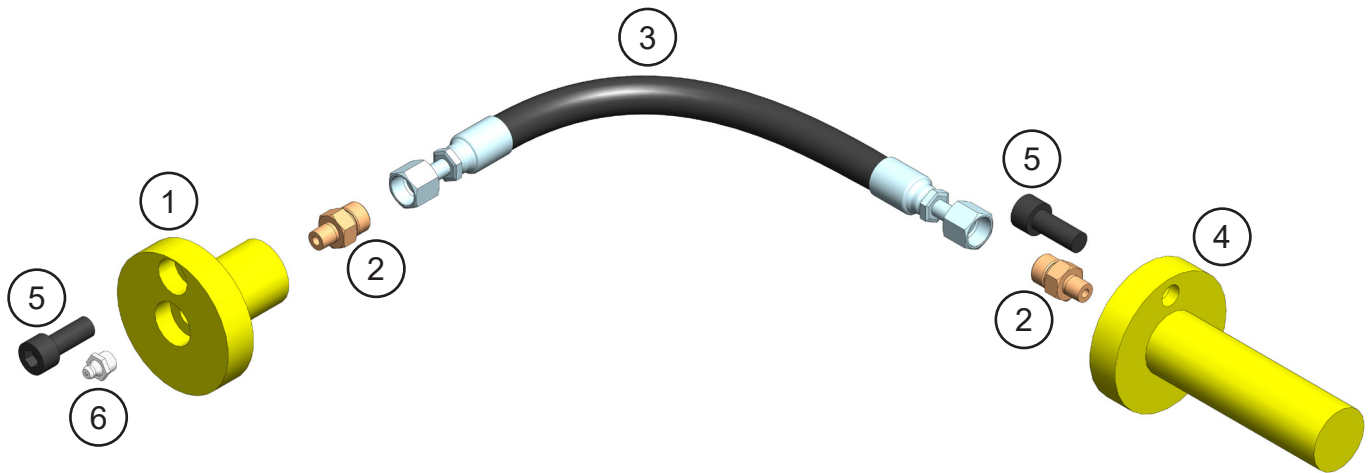
REGEN BLOCK SUB-ASSEMBLY



REGEN BLOCK SUB-ASSEMBLY

ITEM	QTY	PART NUMBER	DESCRIPTION	
1	1	6360022	Manifold Block	Seal Kit SK00188
2	1	6300061	Pilot to Close Check Valve	Seal Kit SK00024
3	1	6301200	Valve Shuttle	Seal Kit SK00125
4	1	6300623	Logic Element	Seal Kit 6300624
5	1	6300625	Pressure Reducing Valve	Seal Kit 6300622
6	1	6300903	Plug Pipe Orifice 01MP 1/16-27 NPT	
7	1	6300076	Plug Socket Head 04MB	
8	2	6300078	Plug Socket Head 06MB	

ASSEMBLY SLEWING RING LUBRICATION



ASSEMBLY SLEWING RING LUBRICATION

ITEM	QTY	PART NUMBER	DESCRIPTION
1	1	5512411	Mach Grease Bulkhead Adaptor
2	2	6300731	Adaptor 02MP-04MO
3	1	1105888	Hose
4	1	5512419	Mach Slewing Ring Grease Adaptor
5	2	F0610025	Socket Head Capscrew M10 x 1.50 x 25
6	1	6200002	Grease Fitting

BOLT TORQUE SPECIFICATIONS

Reference the product Thread Treatment Diagrams on page 39 to determine whether to use wet or dry torque values for specific bolts.

Reference Procedures on page 40 for threadlocker or anti-seize application and bolt and bolt hole cleaning.

Prior to torquing, clean all bolt holes, bolts and nuts to remove dirt, grease and oil, and identify bolt type.

Never re-torque bolts that use Loctite. If a bolt becomes loose or damaged after the initial use when Loctite was applied and the bolt was torqued, the bolt must be replaced.

Never break tightened bolts loose with a torque wrench. Doing so may break the torque wrench or take it out of calibration.

Torque wrenches should be calibrated on an annual basis.

When using a torque multiplier with a torque wrench, incorrect settings will be multiplied by the ratio of the torque wrench.

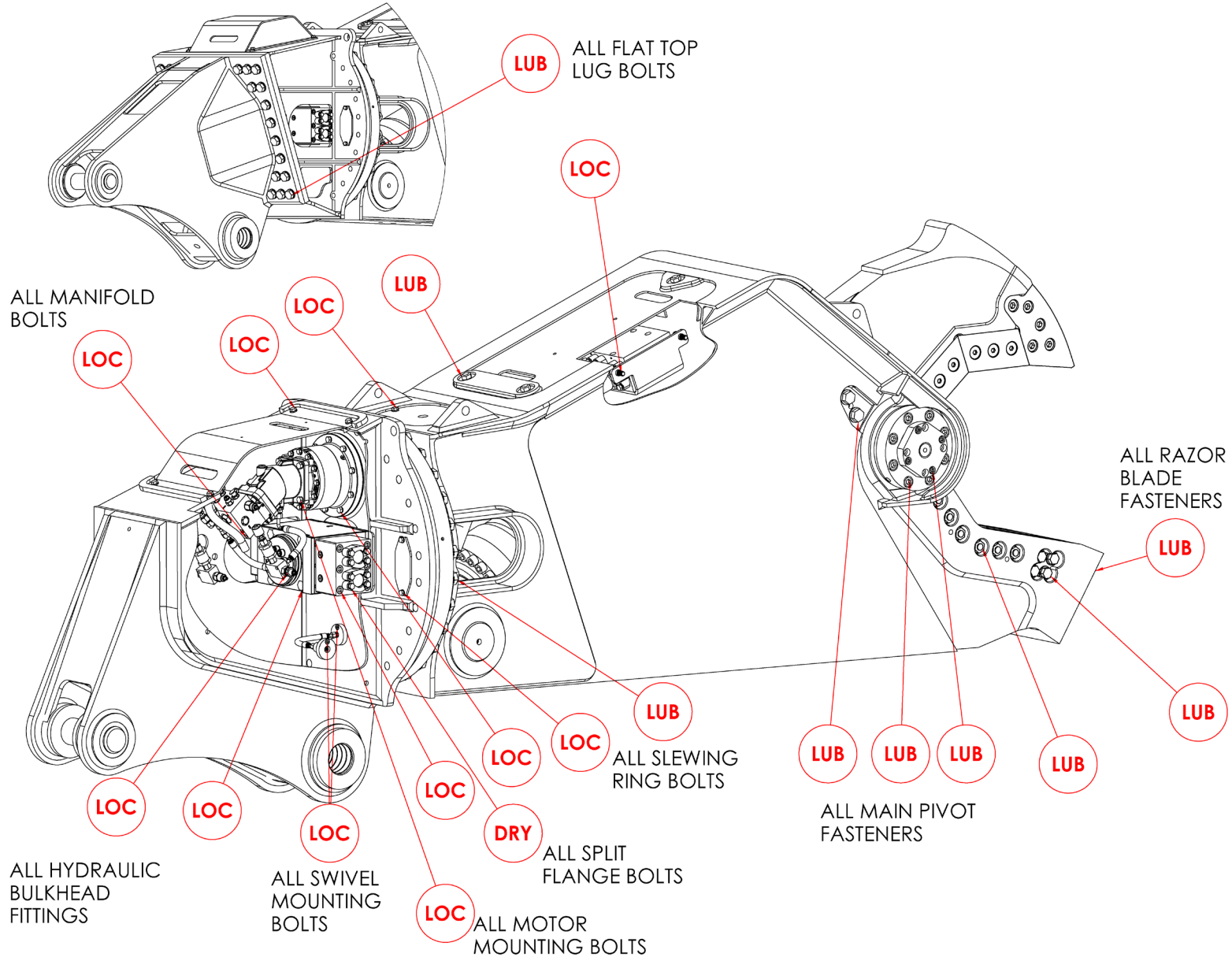
Never use an impact driver on a torque multiplier.

THREAD TREATMENT DIAGRAM

Mobile Shears

Use this diagram to determine what thread treatment, if any, is required for each fastener.

For thread treatment application procedures, see page 40. For prescribed torque values, see page 42.



PROCEDURES

Reference the product Thread Treatment Diagrams on page 39 to determine which of the following procedures is required.

Cleaning

To ensure proper performance of thread treatment and accurate torque values, clean and degrease **all internal and external threads** prior to application of threadlocker, anti-seize or primer and before installation of hardware.

- Ensure both internal and external threads are free of dirt or debris.
- Use brake cleaner or similar cleaning solvent on all threads to remove any grease or oil.
- Allow threads to dry.

NOTICE

Failure to properly clean threads will cause threadlocker, primer, and/or anti-seize to not properly cure!

LOC

Threadlocker

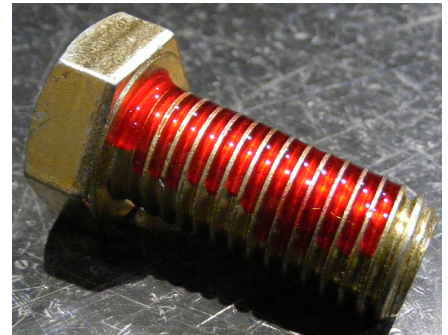
For bolted connections requiring threadlocker, use **Loctite 263** or equivalent applied using the following procedure:

- Clean and degrease all threads.
- For thru holes or nuts, apply threadlocker to bolt threads.
- For blind holes, apply stripe of threadlocker along the length of the hole (applying to the bolt can cause escaping air to remove threadlocker as the bolt is inserted).
- Torque bolt to specified **Wet Torque Value**, see page 42.

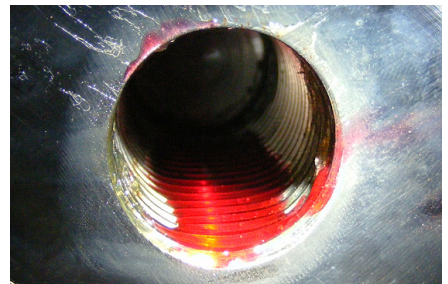
For threaded hydraulic fitting connections, use **Loctite 5452** or equivalent thread sealant in conjunction with **Loctite 7471** primer using the following procedure:

- Clean and degrease all threads.
- Apply Loctite 7471 primer to both external and internal threads and allow to dry.
- Apply threadlocker to 360 degrees of the threads on the male fitting, ensuring adequate coverage.
- Assemble fitting per directions in operator's manual.
- For O-ring boss and flat face O-ring connections, torque fittings to values specified on page 43.

Threadlocker



Blind Hole



Hydraulic Fitting



PROCEDURES

LUB

Anti-Seize

For bolted connections requiring anti-seize lubrication, use **Loctite LB8008** or equivalent using the following procedure:

- Clean and degrease all threads.
- Apply thin coat of anti-seize to internal and external threads and under bolt head and/or nut, ensuring complete coverage.
- Torque bolt to specified **Wet Torque Value**, see page 42.

Anti-Seize

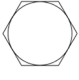
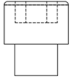
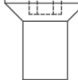


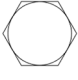
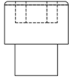
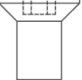
DRY

No Thread Treatment

- Clean and degrease all threads.
- Torque bolt to specified **Dry Torque Value**, see page 42.

BOLT TORQUE SPECIFICATIONS

Dry Torque Values					
		Hex/Socket Head		Flat Head	
		 			
Fastener Grade	Size x Pitch	Nm	Ft-lb	Nm	Ft-lb
CL 10.9	M8 x 1.25	35	26	27	20
	M10 x 1.50	71	53	58	42
	M12 x 1.75	124	92	101	73
	M14 x 1.50	200	148	163	118
	M14 x 2.00	200	148	163	118
	M16 x 2.00	311	230	254	184
	M20 x 1.50	610	450	498	360
	M20 x 2.50	608	449	497	359
	M24 x 3.00	1054	778	861	622
	M27 x 3.00	1543	1138	1260	910
	M30 x 3.50	2095	1545	1712	1236
	M36 x 4.00	3659	2699	2991	2159
8	1/4-20	14	11	11	8
	5/16-18	32	24	26	19
	3/8-16	59	44	48	35
	7/16-14	94	70	77	56
	1/2-13	143	106	116	84
	1/2-20	162	120	133	96
	5/8-11	287	212	234	169
	3/4-10	509	376	415	300
	7/8-9	821	606	670	484
	1.00-8	1232	909	1007	727
	1.00-14	1383	1020	1130	816
	1.25-7	2463	1817	2013	1453
8/L9	1.50-6	4287	3162	3504	2529

Wet Torque Values					
		Hex/Socket Head		Flat Head	
		 			
Fastener Grade	Size x Pitch	Nm	Ft-lb	Nm	Ft-lb
CL 10.9	M8 x 1.25	29	22	23	17
	M10 x 1.50	61	45	49	36
	M12 x 1.75	105	78	85	62
	M14 x 1.50	150	111	121	88
	M14 x 2.00	170	126	138	100
	M16 x 2.00	265	196	216	156
	M20 x 1.50	456	337	372	269
	M20 x 2.50	517	382	422	305
	M24 x 3.00	894	660	731	528
	M27 x 3.00	1312	968	1072	774
	M30 x 3.50	1779	1312	1453	1049
	M36 x 4.00	3110	2294	2542	1835
8	1/4-20	13	10	11	8
	5/16-18	27	20	22	16
	3/8-16	50	37	40	29
	7/16-14	80	59	65	47
	1/2-13	122	90	99	72
	1/2-20	138	102	112	81
	5/8-11	244	180	199	144
	3/4-10	433	320	354	256
	7/8-9	698	515	570	412
	1.00-8	1046	772	854	617
	1.00-14	1175	867	960	693
	1.25-7	2095	1545	1712	1236
8/L9	1.50-6	3644	2688	2979	2150

O-RING BOSS & FLAT FACE O-RING TORQUE SPECIFICATIONS

O-Ring Boss Torque Values		
Size Dash	Nm	Ft-lb
-4	22	16
-5	27	20
-6	36	26
-8	83	60
-10	110	80
-12	187	135
-14	249	180
-16	304	220
-20	387	280
-24	498	360

Flat Face O-Ring Torque Values		
Size Dash	Nm	Ft-lb
-4	18	13
-6	30	22
-8	60	44
-10	85	62
-12	121	88
-14	121	88
-16	160	116
-20	213	154
-24	274	198

BOLT DRIVE SPECIFICATIONS

Thread Size x Pitch	Hex Head	Socket Head	Flat Head
			
Wrench/Drive Size			
M8 x 1.25	13mm	6mm	5mm
M10 x 1.50	17mm	8mm	6mm
M12 x 1.75	19mm	10mm	8mm
M14 x 1.50	22mm	12mm	10mm
M14 x 2.00	22mm	12mm	10mm
M16 x 2.00	24mm	14mm	10mm
M20 x 1.50	30mm	17mm	12mm
M20 x 2.50	30mm	17mm	12mm
M24 x 3.00	36mm	19mm	14mm
M27 x 3.00	41mm	19mm	-
M30 x 3.50	46mm	22mm	-
M36 x 4.00	55mm	27mm	-
1/4-20	7/16"	3/16"	5/32"
5/16-18	1/2"	1/4"	3/16"
3/8-16	9/16"	5/16"	7/32"
7/16-14	5/8"	3/8"	1/4"
1/2-13	3/4"	3/8"	5/16"
1/2-20	3/4"	3/8"	5/16"
5/8-11	15/16"	1/2"	3/8"
3/4-10	1-1/8"	5/8"	1/2"
7/8-9	1-5/16"	3/4"	9/16"
1.00-8	1-1/2"	3/4"	5/8"
1.00-14	1-1/2"	3/4"	5/8"
1.25-7	1-7/8"	7/8"	7/8"
1.50-6	2-1/4"	1"	1"

WARRANTY

Claim Procedure

Notify the Genesis Service Department of the potential warranty claim prior to making the repair. Digital pictures are very helpful for diagnosing problems and recommending repairs.

Contact the Genesis Service Department before making alterations, changes or repairs to any component that is going to be considered for warranty. Not doing so will void all Genesis warranty consideration.

The Genesis Service Department will issue an authorization number to track the repair costs, outgoing parts, and/or defective parts returning to the factory.

Replacement parts must be ordered using a purchase order number. Shipping is standard ground. Overnight shipping is available by request, and Genesis will not cover the shipping charge.

When the repair is complete, submit an invoice to the Genesis Service Department within 30 days. Include itemized internal labor reporting, parts lists and invoices for outside contractors. Reference the authorization number on all invoices.

When returning parts for warranty consideration, include a copy of any related Genesis paperwork along with any other necessary documentation to ensure proper processing and credit. The Genesis Service Department will provide the necessary forms.

Your account will be credited when the warranty claim is accepted.

Blade Warranty

Standard warranty on blades will only be considered on the first edge, and wear on the edge must be 1/8" radius or less. Genesis does not warranty cutting blades that are cracked or broken from top to bottom (perpendicular to the long edge of the blade). Genesis also does not cover fasteners, the labor to replace wear components or collateral damage, such as blade seats, from broken blades, the piercing blade tang or adjustment plates.

Please direct any questions to the Genesis Service Department: 715-395-5252

PARTS ORDER POLICY AND PROCEDURE

Parts Orders Should Include

- Purchase order number
- Model and serial number of attachment
- Part number and quantity needed
- Shipping and billing address
- Method of shipment or required delivery date

Placing Orders

Orders may be placed by phone or e-mail. To e-mail an order, use the form on the following page or your purchase order form. Contact information is located at the front of this manual.

Part Numbers

Part numbers are listed in a separate Parts Manual or, if included, the Parts section of this manual. Contact the Genesis Parts Department with questions regarding part numbers, availability and pricing.

Shipping

All orders will be shipped best way surface unless an alternate shipping method is requested. Shipping charges are not included in the purchase price of parts.

Invoices

All invoices are due upon receipt. Any accounts with invoices open beyond 60 days are subject to review and may be placed on C.O.D. status without further notice.

Returns

Many unused Genesis parts may be returned with proper documentation. Return shipping is the responsibility of the purchaser. Credit will be issued upon return, less a 25% restocking fee. Documentation is required for credit of returned parts. Contact the Genesis Service Department at 715-395-5252 for an RGA (Return Goods Authorization) number and form. An RGA must accompany every return. Items shipped without an RGA may be returned to sender.

Warranty Returns

All parts returned to Genesis for warranty consideration must be returned with a completed RGA (Return Goods Authorization) provided by the Genesis Service Department. The form needs to be completed in its entirety, including any additional information requested by the Service Department. Return shipping is the responsibility of the sender and will be credited upon claim approval. A determination to accept or deny the claim will be made based upon the information available to Genesis. Warranty on purchased parts other than wear components is 6 months. Genesis does not cover labor costs to replace purchased parts replaced under warranty. There is no warranty period on wear parts or components.

INDEX

1-1/4" Split Flange Kit - Code 62	31	6300088 Diagnostic Nipple 04MP	27
1" Split Flange Kit - Code 61	31	6300134 Dowel Pin	7, 9
1" Split Flange Kit - Code 62	31	6300305 Adaptor 10MB-08MFFOR90	25
1105352 Wtmg Upper	5	6300361 Valve Flow Control	29
1105374 Wtmg Stick	5	6300364 Filter	29
1105375 Mach Blade Tip Right	13	6300497 Adaptor Bulkhead 08MB-08MO	29
1105376 Mach Blade Tip Left	13	6300609 Valve Line Body	29
1105377 Mach Adjust Plate - Primary	11	6300623 Logic Element	35
1105378 Mach Adjust Plate - Secondary	11	6300625 Pressure Reducing Valve	35
1105379 Mach Guide Blade Adjust Plate	11	6300731 Adaptor 02MP-04MO	37
1105380 Mach Guide Blade Adjust Plate	11	6300903 Plug Pipe Orifice 01MP 1/16-27 NPT	35
1105382 Mach Bearing RH	7	6301112 O-Ring	19
1105383 Mach Bearing LH	9	6301200 Valve Shuttle	35
1105385 Shim Set Main Shaft	7, 9	6301673 Valve Relief	27
1105386 Mach End Cap	7, 9	6310001 Diagnostic Nipple Dust Cap	27
1105387 Mach Blade Guide	11	6310183 Adaptor 08MB-08MB	29
1105388 Mach Valve Tray	31	6360010 Valve Block	27
1105456 Mach Bearing Upper Cylinder Connection	17	6360022 Manifold Block	35
1105457 Mach Rear Cyl Pin	17	6380035 Valve Counterbalance	27
1105458 Shim Set - Guide Blade	11	6380082 Motor	23
1105459 Shim Set - Blade	11	Assembly Access Covers	5, 18, 19
1105551 Hose	25	Assembly Auto Guide	5, 14, 15
1105552 Hose	25	Assembly Cylinder B10.0 R7.0 S21.25	31
1105854 Mach Flange Shoulder Bolt	19	Assembly Cylinder Pins	5, 16, 17
1105888 Hose	37	Assembly Lower Blades	5, 10, 11
1106478 Shim Set, Auto Guide	15	Assembly Open and Close Circuit	5, 30, 31
1106899 Hose	31	Assembly Pivot Group - Left Side	5, 8, 9
1106900 Hose	31	Assembly Pivot Group - Right Side	5, 6, 7
1106901 Hose	31	Assembly Rotation	5, 22, 23, 25
1106902 Hose	31	Assembly Rotation Circuit	5, 24, 25
1107014 Mach Spacer	23	Assembly Slewing Ring Lubrication	5, 36, 37
1108183 Mach Bolt Socket Head Capscrew	23	Assembly Swivel Manifold	5, 31, 32, 33
1108991 Wldt Cover	19	Assembly Upper Blades	5, 12, 13
3101225 Pinion	23	Assembly Upper Head	5, 20, 21
3101226 Mach Washer Motor Pinion	23	Bolt Drive Specifications	44
3500309 Mach Pin Keeper Rear	17	Bolt Torque Specifications	38, 42
3500345 Wldt Front Cyl Pin	17	Contact Information	2, 50
3500350 Mach Pin Keeper (Clevis)	17	F0110020 Hex Head Capscrew M10 x 1.50 x 20	21
3501912 Mach Spacer - Rotate Valve	25	F0110030 Hex Head Capscrew M10 x 1.5 x 30	31
3503361 Mach Bracket - Motion Control	25	F0110035 Hex Head Capscrew M10 x 2.00 x 60	31
4500397 Mach Blade	11, 13	F0112020 Hex Head Capscrew M12 x 1.75 x 20	21
4500399 Mach Blade Razor	11	F0112030 Hex Head Capscrew M12 x 1.75 x 30	21
5500752 Plt Strap	21	F0112040 Hex Head Capscrew M12 x 1.75 x 40	31
5512411 Mach Grease Bulkhead Adaptor	37	F0112050 Hex Head Capscrew M12 x 1.75 x 50	31
5512419 Mach Slewing Ring Grease Adaptor	37	F0112140 Hex Head Capscrew M12 x 1.75 x 140	25
5513784 Wtmg Sub Head	21	F0116240 Hex Head Capscrew M16 x 2.0 x 240	25, 33
5513798 Plt Bolt Cover	21	F0120090 Hex Head Capscrew M20 x 2.50 x 90	23
5513799 Wtmg Sub Head Cover	21	F0124060 Hex Head Capscrew M24 x 3 x 60	21
6100397 Bearing Slewing	23	F0210400 Hex Head Capscrew 1 - 8 x 4	15
6200002 Grease Fitting	7, 9, 15, 17, 37	F0238100 Hex Head Capscrew 3/8 - 16 x 1	23
6300052 Adaptor 12MB-08MO	25	F0275150 Hex Head Capscrew 3/4 - 10 x 1 1/2	11
6300054 Plug Socket Head 08MB	27	F0275300 Hex Head Capscrew 3/4 - 10 x 3	11
6300061 Pilot to Close Check Valve	35	F0275400 Hex Head Capscrew 3/4 - 10 x 4	11
6300076 Plug Socket Head 04MB	35	F0575350 Flat Head Capscrew 3/4 - 10 x 3 1/2	11, 13
6300078 Plug Socket Head 06MB	35	F0575500 Flat Head Capscrew 3/4 - 10 x 5	13

INDEX

F0610025 Socket Head Capscrew M10 x 1.50 x 25	37	Torque Arm Kit	33
F0616035 Socket Head Capscrew M16 x 2 x 35	31	Valve Regen	31
F0620100 Socket Head Capscrew M20 x 2.50 x 100	17	Warranty	45
F0620160 Socket Head Capscrew M20 x 2.50 x 160	17	Wldt Pin	21
F0624050 Socket Head Capscrew M24 x 3.00 x 50	7, 9	Wtmg Lug Upper Head	5, 21
F0775300 Mach Bolt Socket Head Capscrew $\frac{3}{4}$ - 10 x 3	13		
F0907510 Hex Head Nut $\frac{3}{4}$ - 10	11, 13		
F1020250 Nylock Hex Nut M20 x 2.50	17		
F1201021 Flat Washer M10	21		
F1201224 Flat Washer M12	25		
F1202444 Flat Washer M24	21		
F1300075 Flat Washer Narrow $\frac{3}{4}$	11, 13		
F1300100 Flat Washer Narrow 1"	15		
F1401000 Lock Washer M10	31		
F1401200 Lock Washer M12	21, 31		
F1900040 Washer Nord Lock	31		
F1900050 Washer Nord Lock	23		
F1900063 Washer Nord Lock	25, 31		
F1900063 Wedge Lock Washer $\frac{5}{8}$	33		
F2575075 Set Screw Socket Head $\frac{3}{4}$ - 10 X $\frac{3}{4}$	11		
F3616020 Socket Head Shoulder Screw M16 x 2 x 20	31		
General Arrangement	4, 5		
H0261100 Split Flange Half 1.00 Code 61	31		
H0262100 Split Flange Half 1.00 Code 62	31		
H0262125 Split Flange Half 1.25 Code 62	31		
Mach Main Shaft	9		
Mach Port Block	31		
Mach Spacer Sleeve	21		
O-Ring	31		
O-Ring Boss & Flat Face O-Ring Torque Specifica- tions	43		
Parts Order Form	47		
Parts Order Policy and Procedure	46		
Procedures	40, 41		
Regen Block Sub-Assembly	34, 35		
S0190219 O-Ring	31		
S0190222 O-Ring	31		
S0190267 O-Ring	7, 9		
S0190369 O-Ring	7, 9		
Seal Kit 6300622	34, 35		
Seal Kit 6300624	34, 35		
Seal Kit 6300633	26, 27		
Seal Kit 6300634	28, 29		
Seal Kit SK00024	34, 35		
Seal Kit SK00058	26, 27		
Seal Kit SK00125	34, 35		
Seal Kit SK00188	35		
Socket Head Capscrew	31		
Sub-Assembly Line Mount Manifold	5, 25, 28, 29		
Sub-Assembly Regen Block	5		
Sub-Assembly Rotate Cross-over / C'bal	5, 25, 26, 27		
Table of Contents	3		
Thread Treatment Diagram	39		



GENESIS®

The Promise of Performance.

CONTACT INFORMATION

Genesis Attachments

1000 Genesis Drive
Superior, WI 54880 USA

Toll Free: 888-SHEAR-IT
(888-743-2748)

Phone: 715.395.5252

E-mail:
info@genesisattachments.com

Europe/Africa/Middle East Genesis GmbH

Teramostrasse 23
87700 Memmingen, Germany

Phone: +49 83 31 9 25 98 0

Fax: +49 83 31 9 25 98 80

genesis-europe.com

E-mail:
info@genesis-europe.com

Asia Pacific Representative Office

24 Upper Serangoon View #12-28
Singapore 534205

Phone: +65 9673 9730

E-mail:
tchoo@genesisattachments.com

Central America & Colombia

Cra 13A #89-38 / Ofi 613
Bogota, Colombia

Phone: +57 1 610 8160 / 795 8747

E-mail:
contact@themsagroup.com

View and download all manuals: genesisattachments.com/manuals
Patents: genesisattachments.com/products/patents

Rev. Y - 10-11-24