



# TIM'S TECH TIPS



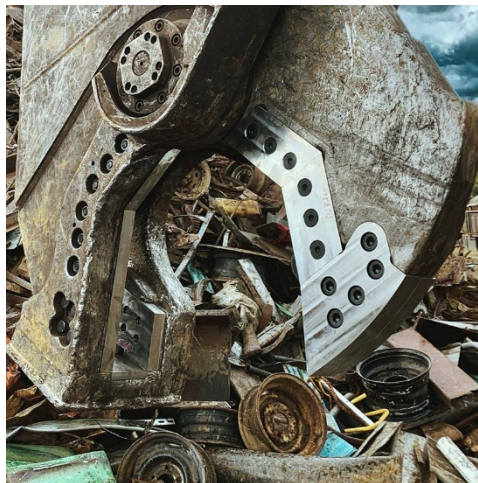
## Blade Installation & Maintenance Tools

Proper blade maintenance is a topic we often discuss because of its critical role in attachment performance. Operating with dull or improperly maintained cutting blades will result in poor cutting, material jamming and inefficient processing. Excessively worn blades or incorrect blade gaps can also lead to premature cylinder failure and structural damage.

Having a maintenance schedule with blades and parts on hand is great, but performing the work can be difficult if you don't have the right tools.

The good news is you don't have to search multiple web sites or for vendors to find these tools.

Genesis stocks and sells everything you need to keep your blades in working condition!



# Blade Installation & Maintenance Tools

## Part Number & Description

6900107 - Hex bit impact socket - 1/2", 1/2" drive

6900110 - Hex bit impact socket - 3/4", 1" drive

6900109 - Hex bit impact socket - 5/8", 1/2" drive

6900023 - Hex bit impact socket - 7/8", 1" drive

6900112 - Hex bit impact socket - 9/16", 1/2" drive

6100114 - Impact socket - 1 1/2", 1" drive, 6 point

6900105 - Impact socket - 1 1/8", 3/4" drive, 6 point

6900108 - Impact socket - 1 5/16", 1" drive, 6 point

6900139 - Impact socket - 1 7/8", 1" drive, 6 point

6900013 - Ratchet - 1" drive, 30" length

6900010 - Torque multiplier - 3/4" input with 1" output

6900011 - Torque wrench - 600 ft-lb torque, 48" length

In addition to blade tools, Genesis offers a variety of other tools required for servicing specific attachments. See the **Genesis Tools List** for the complete offering, and contact the Genesis Parts Department, 715-395-3488, **[genesisparts@genesisattachments.com](mailto:genesisparts@genesisattachments.com)**, or your **local dealer** to order.

An **NPK** Company