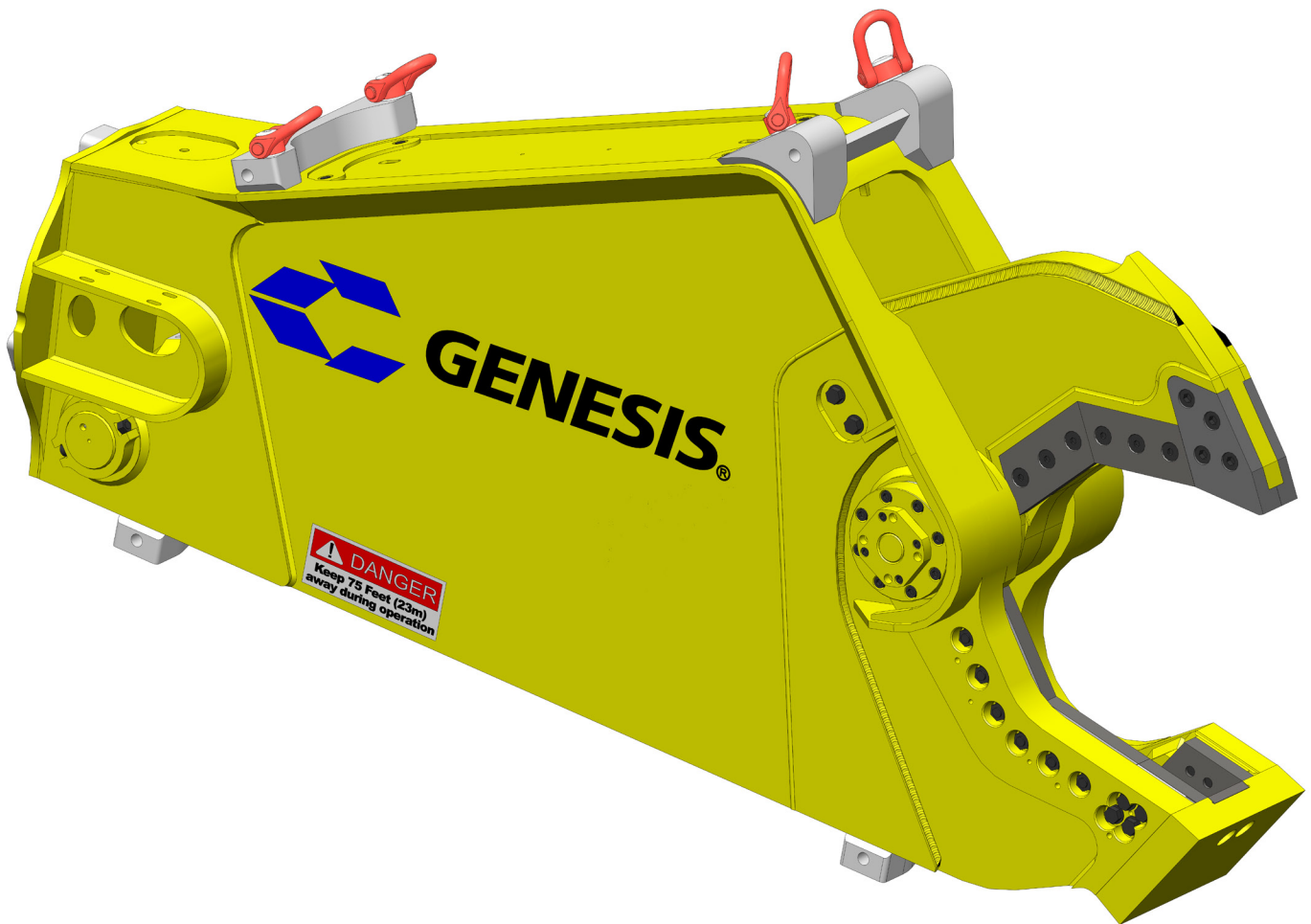


**GENESIS**<sup>®</sup>

The Promise of Performance.

# GSS 660 Subsea Shear

## PARTS MANUAL



## CONTACT INFORMATION

### Genesis Attachments

1000 Genesis Drive  
Superior, WI 54880 USA

Toll Free: 888-SHEAR-IT  
(888-743-2748)

Phone: 715.395.5252

E-mail:  
info@genesisattachments.com

### Europe/Africa/Middle East Genesis GmbH

Teramostrasse 23  
87700 Memmingen, Germany

Phone: +49 83 31 9 25 98 0  
Fax: +49 83 31 9 25 98 80  
genesis-europe.com

E-mail:  
info@genesis-europe.com

### Asia Pacific Representative Office

24 Upper Serangoon View #12-28  
Singapore 534205

Phone: +65 9673 9730

E-mail:  
tchoo@genesisattachments.com

### Central America & Colombia

Cra 13A #89-38 / Ofi 613  
Bogota, Colombia

Phone: +57 1 610 8160 / 795 8747

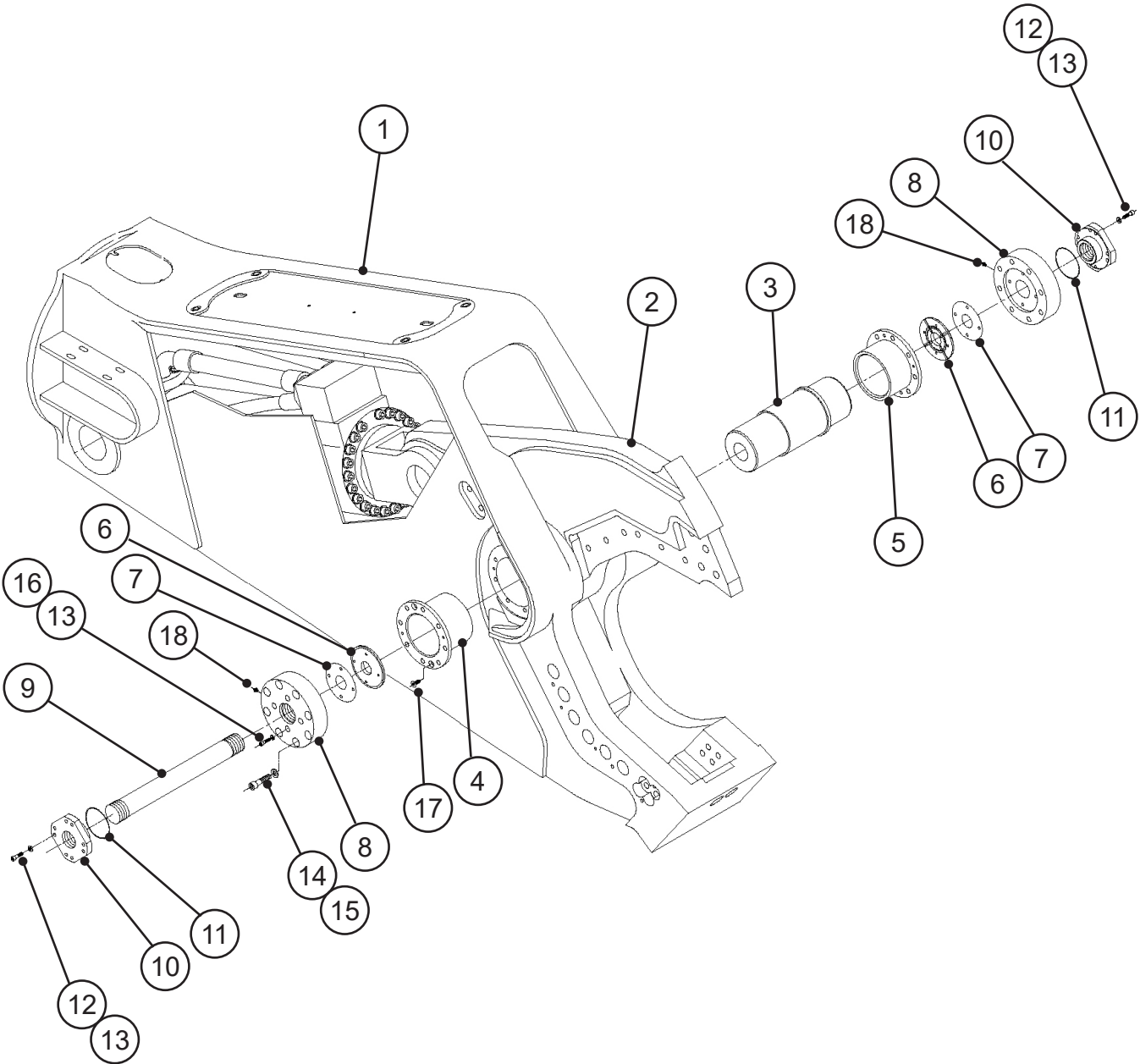
E-mail:  
contact@themsagroup.com

View and download all manuals: [genesisattachments.com/manuals](http://genesisattachments.com/manuals)  
Patents: [genesisattachments.com/products/patents](http://genesisattachments.com/products/patents)

# TABLE OF CONTENTS

<b>CONTACT INFORMATION</b>	<b>2</b>
<b>ASSEMBLY PIVOT GROUP</b>	<b>4</b>
<b>ASSEMBLY LOWER SHEAR BLADES</b>	<b>6</b>
<b>ASSEMBLY UPPER SHEAR BLADES</b>	<b>8</b>
<b>ASSEMBLY AUTO GUIDE</b>	<b>10</b>
<b>ASSEMBLY CYLINDER PINS</b>	<b>12</b>
<b>ASSEMBLY CYLINDER ACCESS</b>	<b>14</b>
<b>ASSEMBLY BRACKET</b>	<b>16</b>
<b>ASSEMBLY PORT BLOCK</b>	<b>18</b>
<b>ASSEMBLY CYLINDER</b>	<b>20</b>
<b>SUB-ASSEMBLY CYLINDER - OS</b>	<b>22</b>
<b>BOLT TORQUE SPECIFICATIONS</b>	<b>24</b>
<b>THREAD TREATMENT DIAGRAM</b>	<b>25</b>
Mobile Shears	25
<b>PROCEDURES</b>	<b>26</b>
Cleaning	26
Threadlocker	26
Anti-Seize	27
No Thread Treatment	27
<b>BOLT TORQUE SPECIFICATIONS</b>	<b>28</b>
Dry Torque Values	28
Wet Torque Values	28
<b>O-RING BOSS &amp; FLAT FACE O-RING TORQUE SPECIFICATIONS</b>	<b>29</b>
<b>BOLT DRIVE SPECIFICATIONS</b>	<b>30</b>
<b>WARRANTY</b>	<b>31</b>
Claim Procedure	31
Blade Warranty	31
<b>PARTS ORDER POLICY AND PROCEDURE</b>	<b>32</b>
Parts Orders Should Include	32
Placing Orders	32
Part Numbers	32
Shipping	32
Invoices	32
Returns	32
Return Goods Authorization	32
<b>PARTS ORDER FORM</b>	<b>33</b>
<b>INDEX</b>	<b>34</b>
<b>CONTACT INFORMATION</b>	<b>36</b>

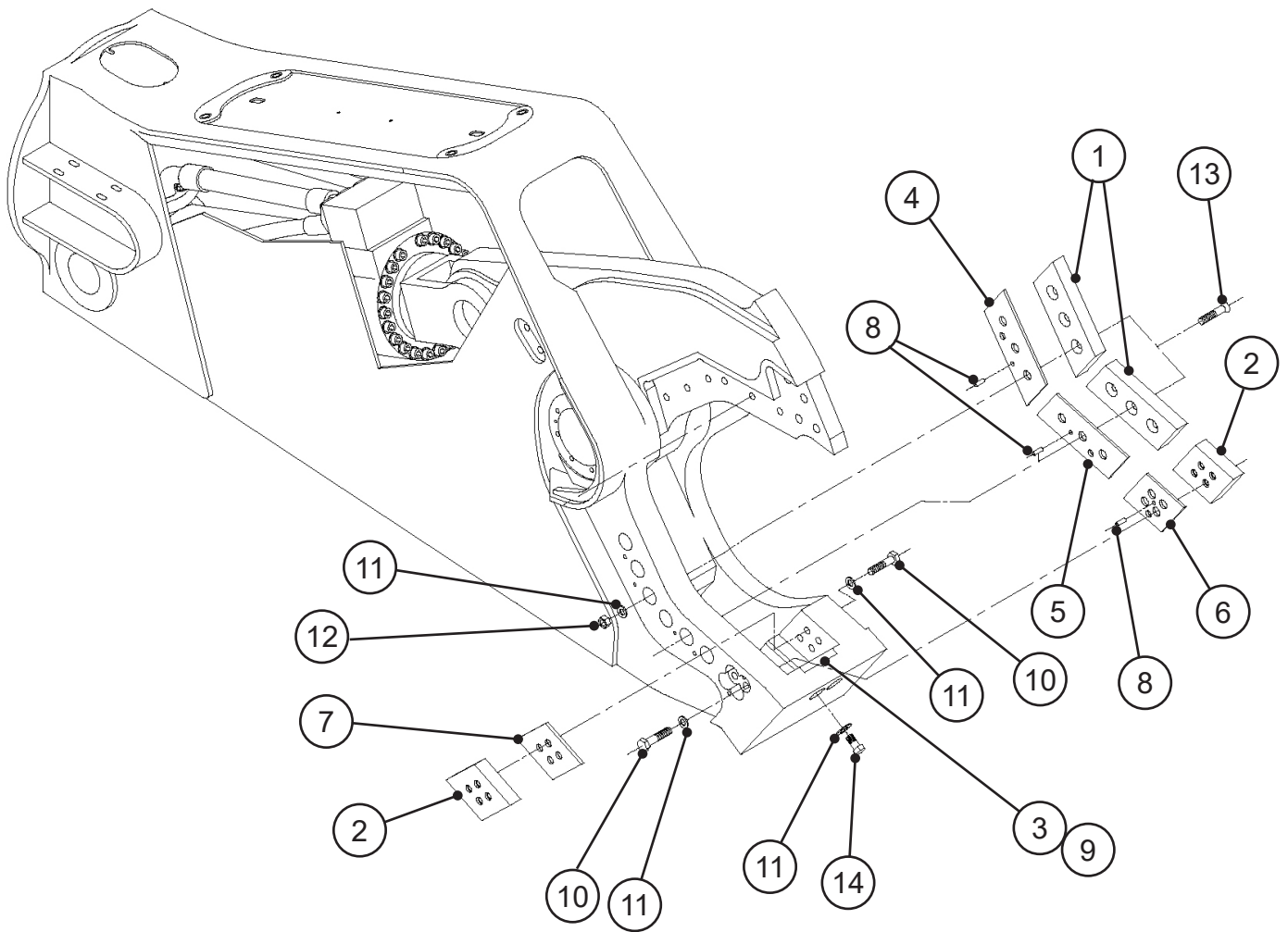
# ASSEMBLY PIVOT GROUP



## ASSEMBLY PIVOT GROUP

ITEM	QTY	PART NUMBER	DESCRIPTION
1	1	1106354	Wtmg Stick
2	1	1104265	Wtmg Upper
3	1	1103124	Mach Main Shaft
4	1	1103125	Mach Bearing RH
5	1	1103126	Mach Bearing LH
6	2	1102442	Mach Thrust Washer
7	2	1102448	Shim Set Thrust Washer
8	2	1102444	Mach End Cap
9	1	1103792	Mach Tie Rod
10	2	1102446	Mach Tie Rod Nut
11	2	S0190244	O-Ring
12	8	F0112040	Hex Head Capscrew M12 x 1.75 x 40
13	16	F1201224	Flat Washer M12
14	16	F0620100	Socket Head Capscrew M20 x 2.50 x 100
15	16	F1202037	Flat Washer M20
16	8	F0612045	Socket Head Capscrew M12 x 1.75 x 45
17	4	F0412030	Flat Head Capscrew M12 x 1.75 x 30
18	2	6200002	Grease Fitting

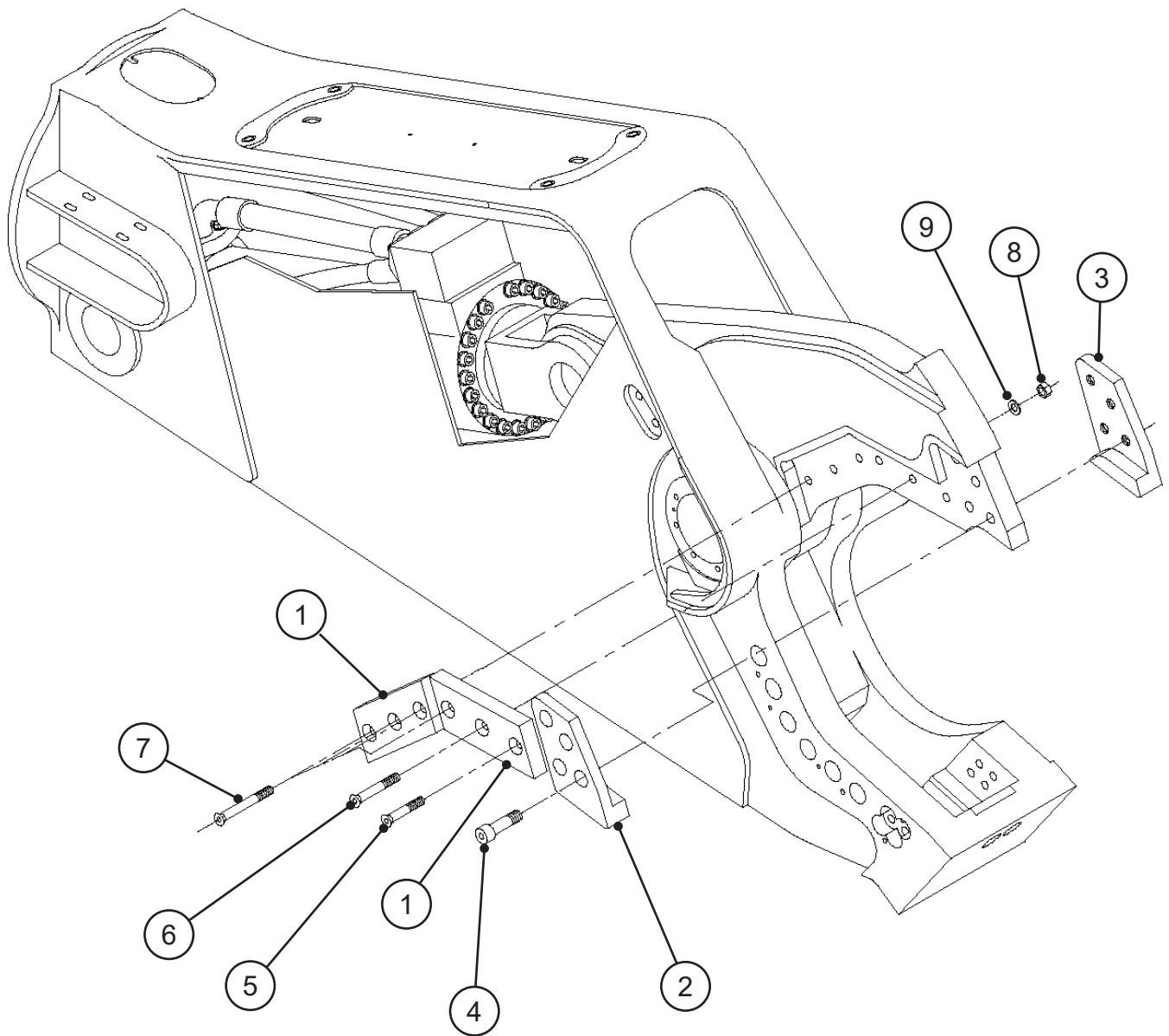
# ASSEMBLY LOWER SHEAR BLADES



## ASSEMBLY LOWER SHEAR BLADES

ITEM	QTY	PART NUMBER	DESCRIPTION
1	2	1102939	Mach Blade
2	2	1103334	Mach Blade Guide
3	1	1101957	Mach Blade Razor
4	1	1104357	Mach Adjustment Plate
5	1	1104358	Mach Adjustment Plate
6	1	1104361	Mach Adjustment Plate
7	1	1105152	Mach Adjustment Plate
8	3	6300134	Dowel Pin
9	2	F2510100	Set Screw Socket Head 1 - 8 x 1
10	4	F0210450	Hex Head Capscrew 1 - 8 x 5½
11	4	F1300100	Flat Washer 1"
12	6	F0910008	Hex Nut 1 - 8
13	6	F0510600	Flat Head Capscrew 1 - 8 x 6
14	2	F0210175	Hex Head Capscrew 1 - 8 x 1¾
<b>SHIM SET</b>			
		1104515	Shim Set Blade
	4	6100316	Shim 0.005
	4	6100317	Shim 0.010
	4	6100318	Shim 0.020

# ASSEMBLY UPPER SHEAR BLADES

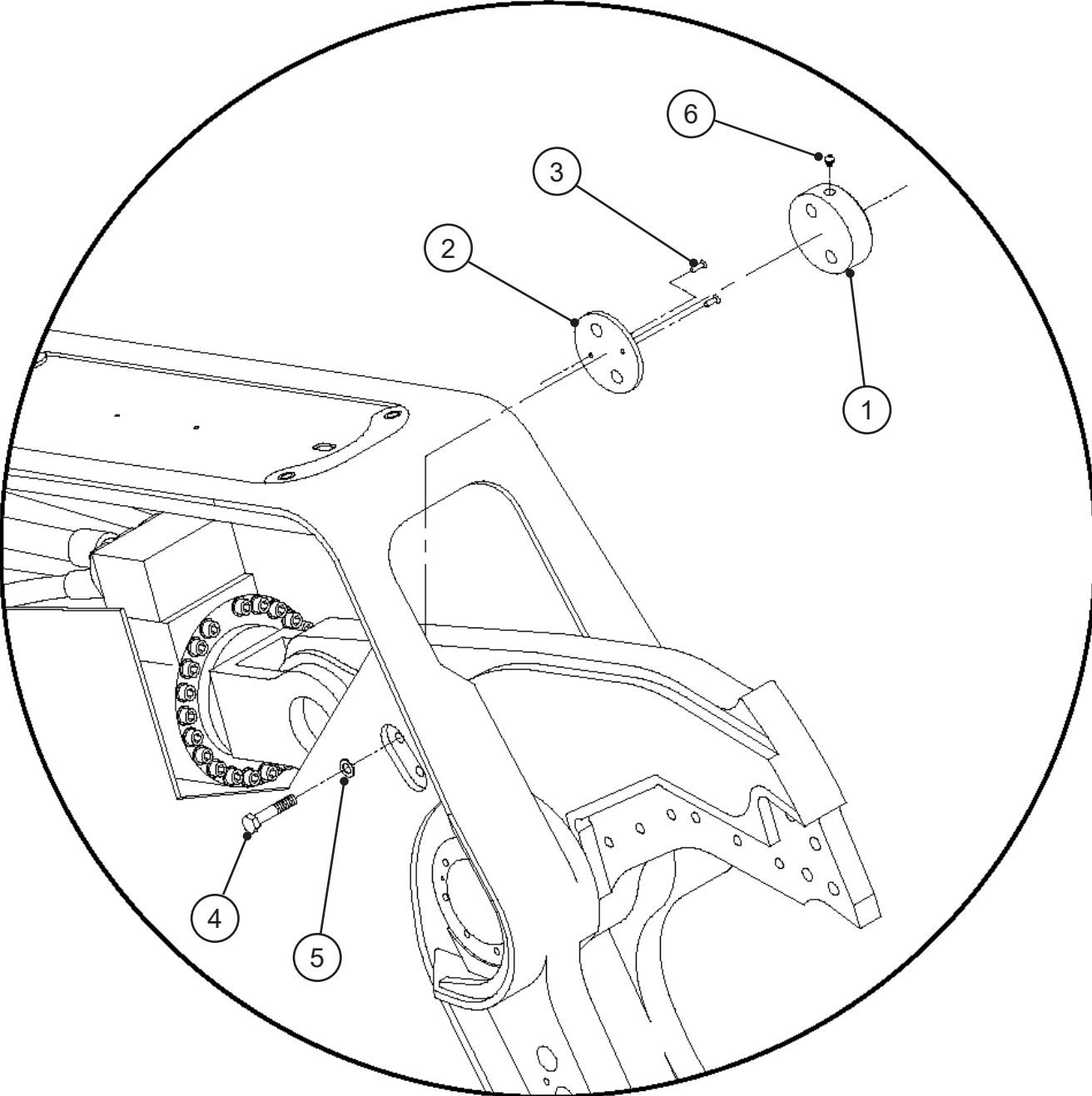




## ASSEMBLY UPPER SHEAR BLADES

ITEM	QTY	PART NUMBER	DESCRIPTION
1	2	1102939	Mach Blade
2	1	1102832	Mach Blade Tip RH
3	1	1102833	Mach Blade Tip LH
4	4	1102857	Mach Bolt Socket Head Capscrew 1¼ - 7 x 4½
5	1	F0510550	Flat Head Capscrew 1 - 8 x 5½
6	1	F0510600	Flat Head Capscrew 1 - 8 x 6
7	4	F0510800	Flat Head Capscrew 1 - 8 x 8
8	6	F0910008	Hex Nut 1 - 8
9	6	F1300100	Flat Washer 1"
<b>SHIM SET</b>			
		1104515	Shim Set Blade
	4	6100316	Shim 0.005
	4	6100317	Shim 0.010
	4	6100318	Shim 0.020

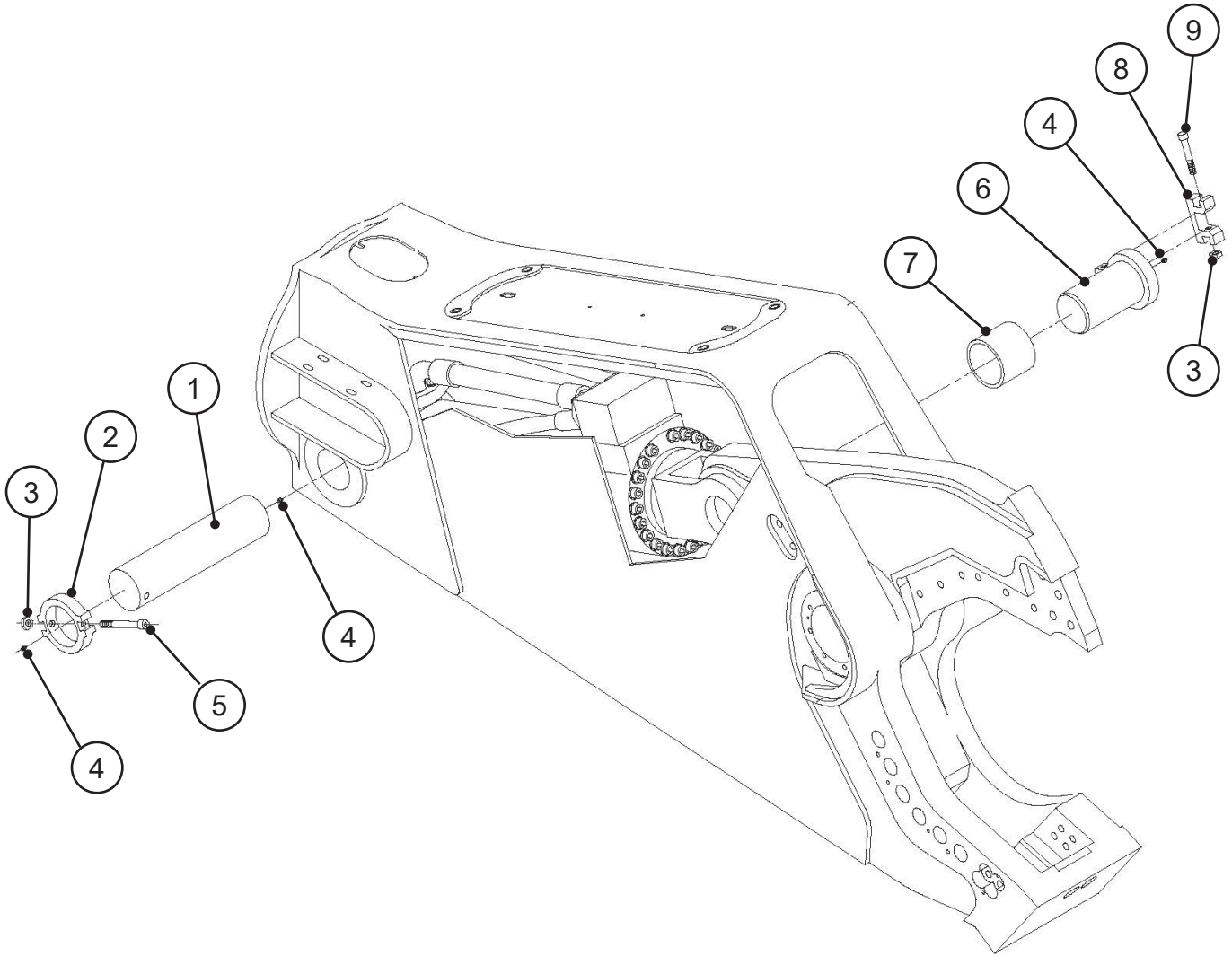
# ASSEMBLY AUTO GUIDE



## ASSEMBLY AUTO GUIDE

ITEM	QTY	PART NUMBER	DESCRIPTION
1	1	1103373	Mach Auto Guide
2	1	1103375	Mach Auto Guide Adjustment Plate
3	2	F0410035	Flat Head Capscrew M10 x 1.5 x 35
4	2	F0210500	Hex Head Capscrew 1 - 8 x 5
5	2	F1300100	Flat Washer 1"
6	1	6200002	Grease Fitting
<b>SHIM SET</b>			
		3100721	Shim Set Guide
	2	6100145	Shim 0.005
	2	6100146	Shim 0.010
	4	6100147	Shim 0.020

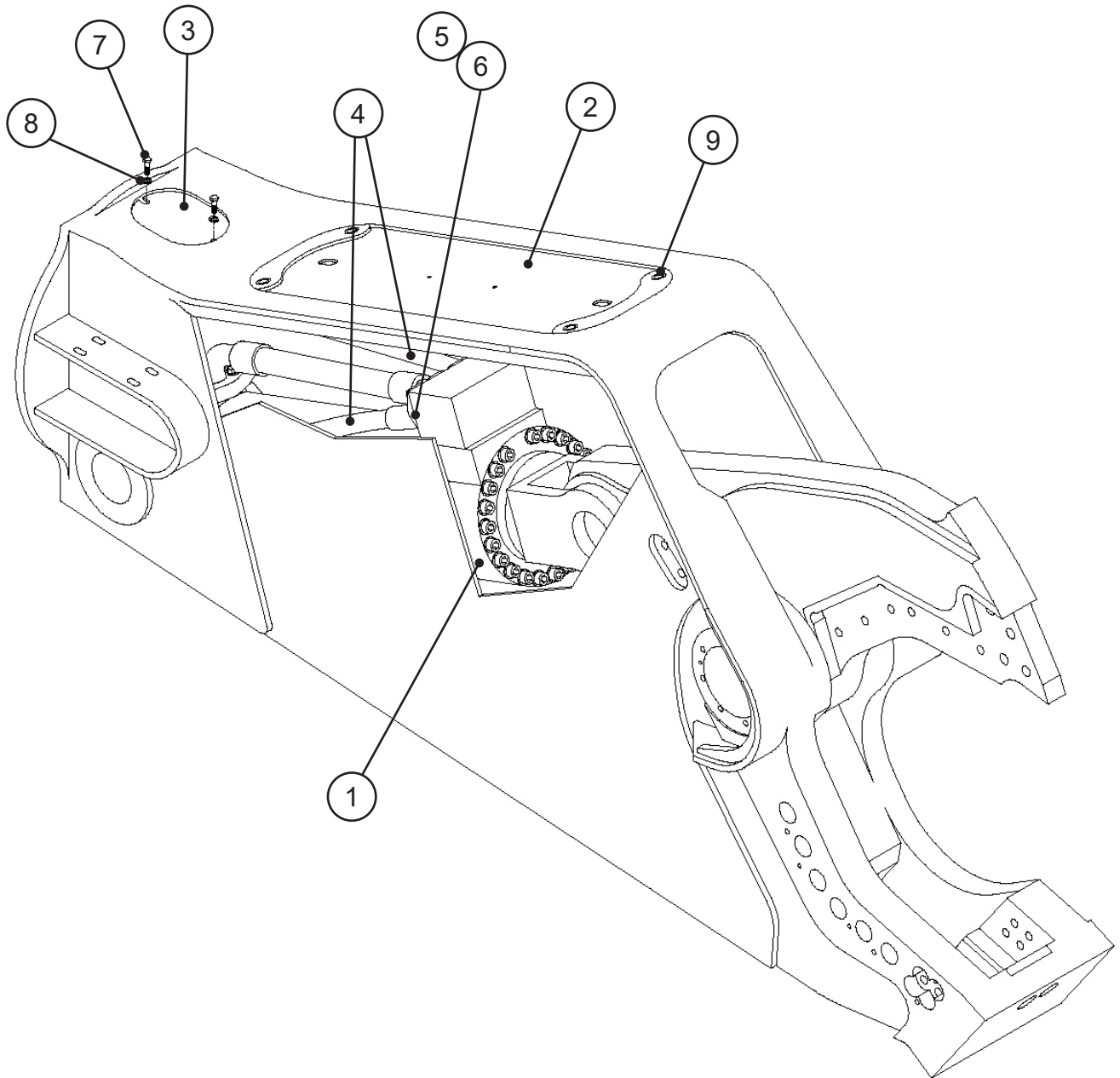
# ASSEMBLY CYLINDER PINS



## ASSEMBLY CYLINDER PINS

ITEM	QTY	PART NUMBER	DESCRIPTION
1	1	1103170	Mach Pin Rear
2	1	1103172	Mach Pin Keeper Rear
3	2	F1020250	Nylock Hex Nut
4	6	6200002	Grease Fitting
5	1	F0620200	Socket Head Capscrew M20 x 2.50 x 2.00
6	1	1102486	Wldt Pin (Front) Long
7	1	3100061	Mach Bearing Upper
8	1	1102487	Mach Pin Keeper
9	1	F0620130	Socket Head Capscrew M20 x 2.50 x 130

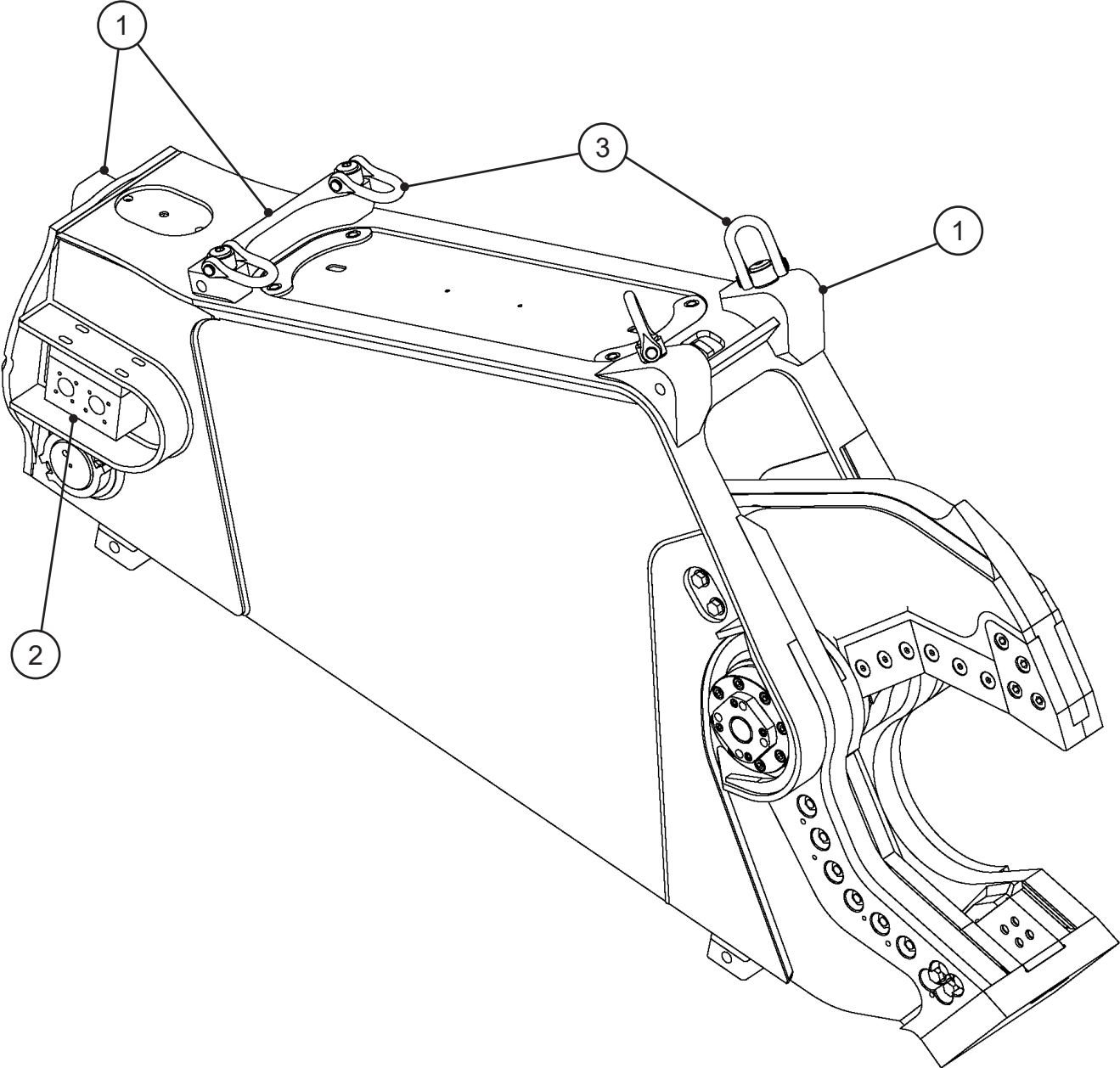
# ASSEMBLY CYLINDER ACCESS



## ASSEMBLY CYLINDER ACCESS

ITEM	QTY	PART NUMBER	DESCRIPTION
1	1	1201235	Assembly Cylinder B14.00 R9.00 S32.75
2	1	1106064	Wldt Cover
3	1	F1020250	Nylock Hex Nut
4	3	1104562	24-6WR13-24FLH9062-24FLH62-42.15
5	4	H0262150	Split Flange Half 1.50
6	2	S0190225	O-Ring 1.50
7	2	F0112030	Hex Head Capscrew M12 x 1.75 x 30
8	2	F1201224	Flat Washer M12
9	4	F0116030	Hex Head Capscrew M16 x 2.00 x 30

# ASSEMBLY BRACKET

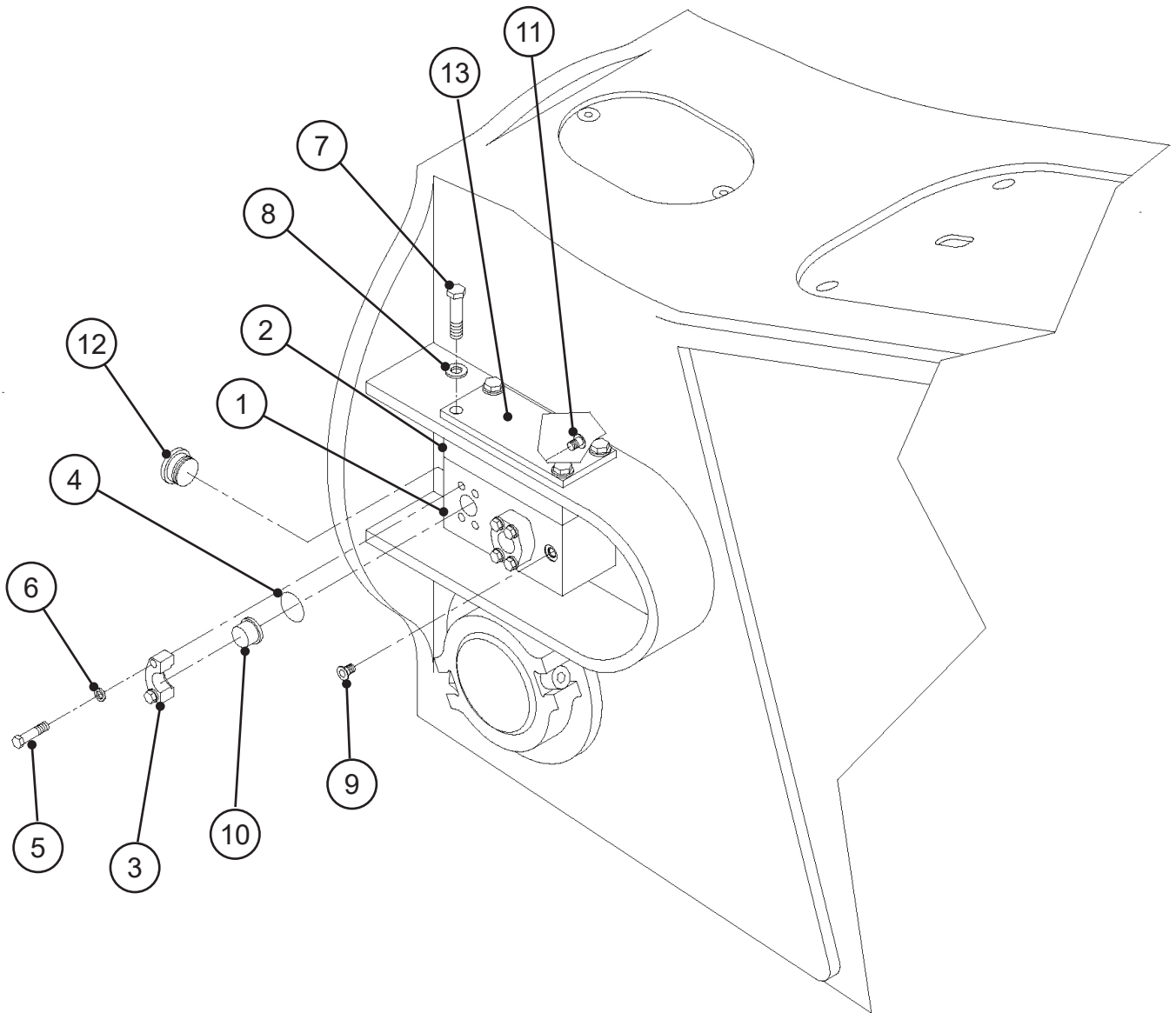




## ASSEMBLY BRACKET

ITEM	QTY	PART NUMBER	DESCRIPTION
1	1	5511806	Wldt Bracket Kit
2	1	1103278	Assy Port Block
3	4	6200078	Shackle Double Swing

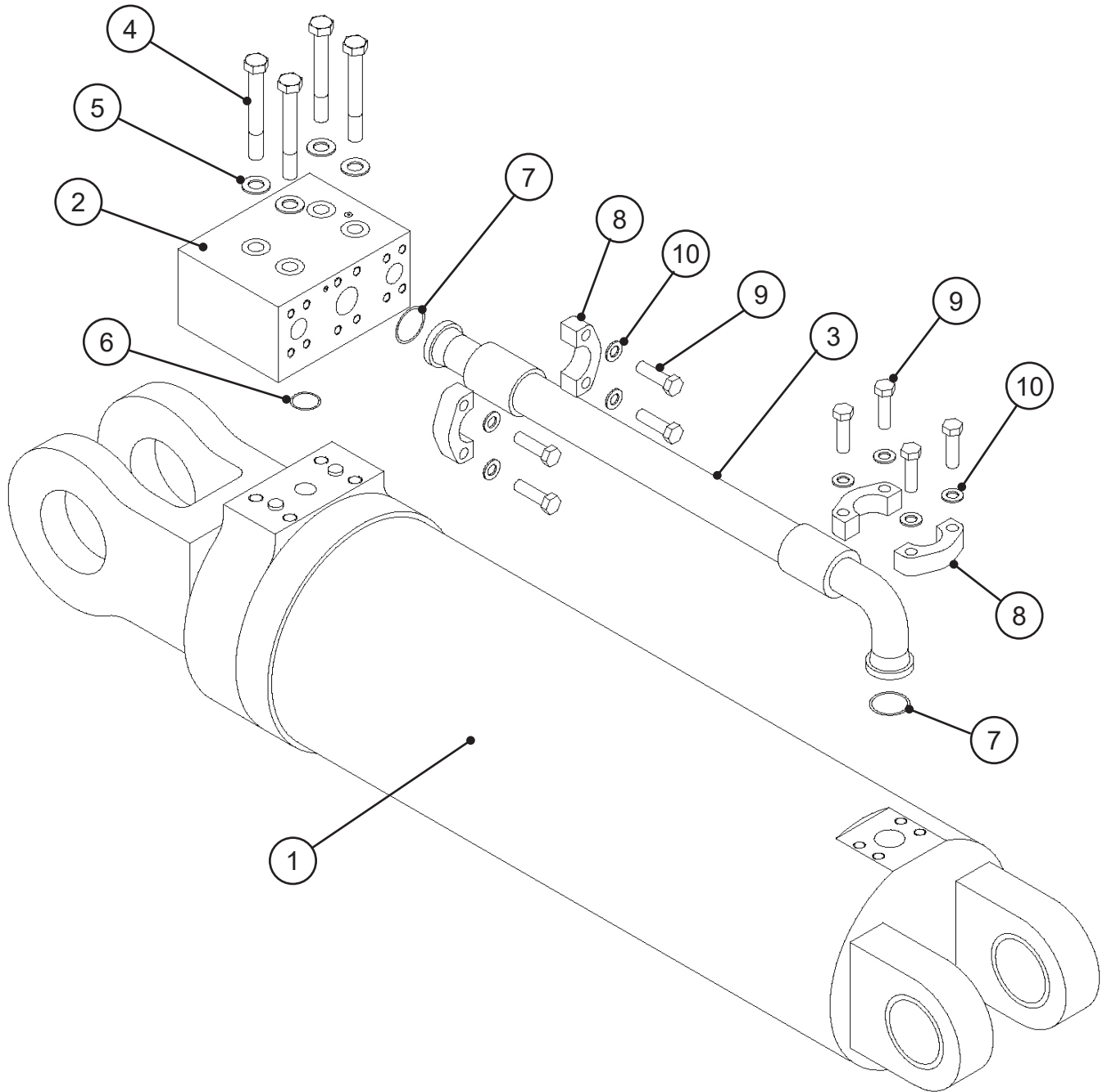
# ASSEMBLY PORT BLOCK



## ASSEMBLY PORT BLOCK

ITEM	QTY	PART NUMBER	DESCRIPTION
1	2	1104001	Mach Port Block
2	2	1103276	Plt Spacer Port Block
3	2	H0262125	Split Flange Half 1.25
4	4	S0190222	O-Ring 1.25
5	16	F0112050	Hex Head Capscrew M12 x 1.75 x 50
6	16	F1401200	Lock Washer M12
7	8	F0116080	Hex Head Capscrew M16 x 2.00 x 80
8	8	F1201630	Flat Washer M16
9	2	6300153	Plug Socket Head 06MB
10	4	H0362125	Split Flange Plug 1.25
11	2	6300054	Plug Socket Head 08MB
12	2	6300079	Plug Socket Head 20MB
13	2	1106112	Mach Washer Plt

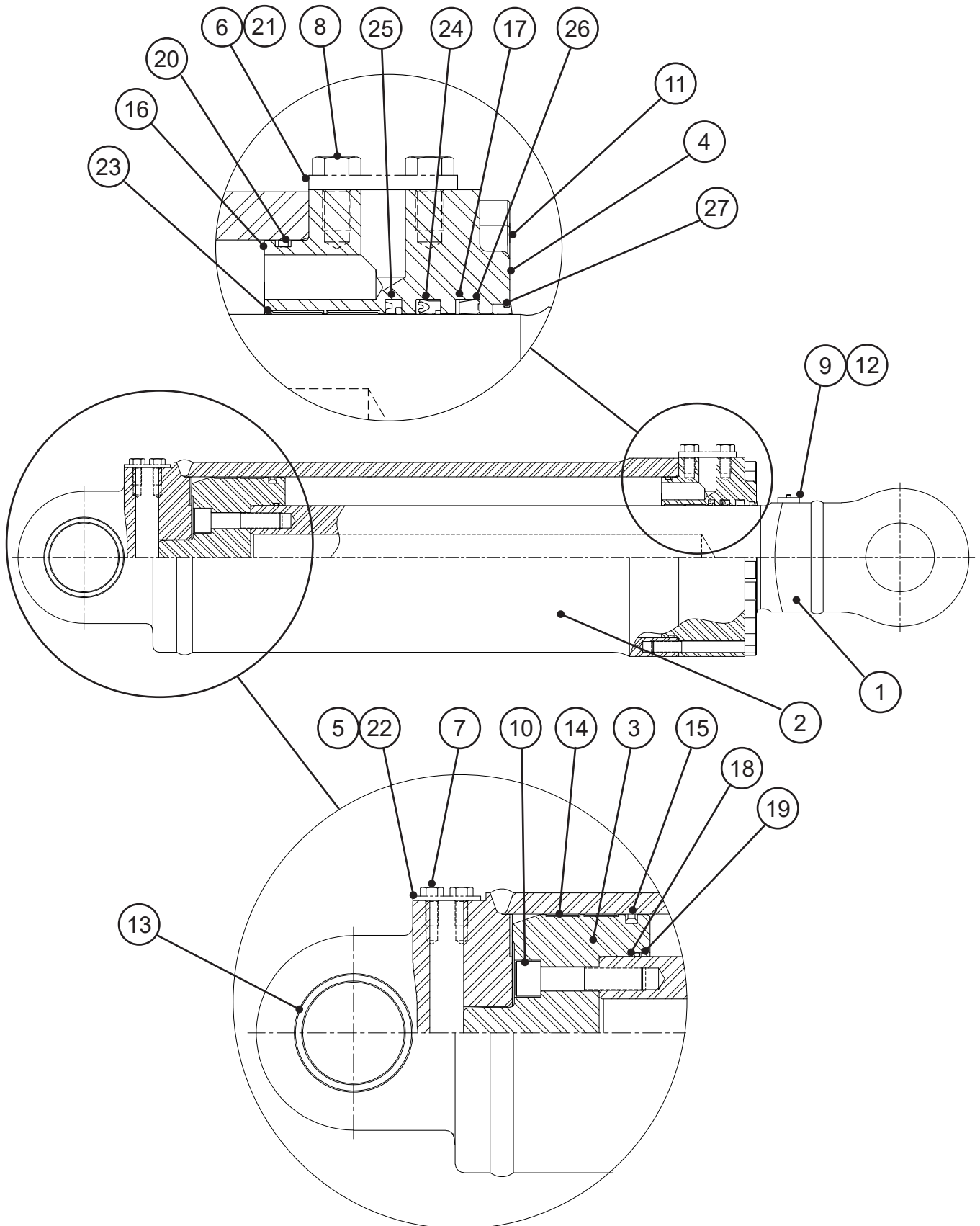
# ASSEMBLY CYLINDER



## ASSEMBLY CYLINDER

ITEM	QTY	PART NUMBER	DESCRIPTION
1	1	6350040	Sub-Assembly Cylinder B14.0 R9.0 S32.75
2	1	6390015	Manifold Regen Bypass
3	1	1200049	Hose 32-6WR13-32FLH9062-32FLH62-43.16
4	4	F0124180	Hex Head Capscrew M24 x 3 x 180
5	4	F1202444	Flat Washer M24
6	1	6300733	O-Ring - High Pressure Seal
7	2	S0190228	O-Ring
8	4	H0662200	Split Flange Half
9	8	F0120070	Hex Head Capscrew M20 x 2.5 x 70
10	8	F1402000	Lock Washer M20

# SUB-ASSEMBLY CYLINDER - OS



## SUB-ASSEMBLY CYLINDER - OS

ITEM	QTY	PART NUMBER	DESCRIPTION
1	1	6350054	Assembly Piston Tube - OS
2	1	6350055	Assembly Butt and Tube - OS
3	1	6350056	Piston - OS
4	1	6350057	Gland - OS
5	1	6300978	Port Cover - OS
6	1	6300979	Port Cover - OS
7	2	6300980	Hex Head Capscrew - OS
8	2	6300981	Hex Head Capscrew - OS
9	4	6300982	Socket Head Capscrew - OS
10	8	6300983	Socket Head Capscrew - OS
11	25	6300984	Socket Head Capscrew - OS
12	2	6300985	Anode - OS
13	2	6300986	Bushing - OS
14	2	6300987	Bearing Ring - OS*
15	1	6300988	Capped T-Seal - OS*
16	2	6300989	Back-Up Washer - OS*
17	1	6300990	Back-Up Washer - OS*
18	1	6300991	O-Ring - OS*
19	2	6300992	Back-Up Washer - OS*
20	1	6300993	Kuvel Seal - OS*
21	1	6300994	O-Ring - OS*
22	1	6300995	O-Ring - OS*
23	2	6300996	Rod Bearing - OS*
24	1	6300997	Rod Bearing - OS*
25	1	6300998	Buffer Seal - OS*
26	1	6300999	Special Wiper - OS*
27	1	6301000	Special Wiper - OS*
		* 6301001	Seal Kit - OS

## BOLT TORQUE SPECIFICATIONS

Reference the product Thread Treatment Diagrams on page 25 to determine whether to use wet or dry torque values for specific bolts.

Reference Procedures on page 26 for threadlocker or anti-seize application and bolt and bolt hole cleaning.

Prior to torquing, clean all bolt holes, bolts and nuts to remove dirt, grease and oil, and identify bolt type.

Never re-torque bolts that use Loctite. If a bolt becomes loose or damaged after the initial use when Loctite was applied and the bolt was torqued, the bolt must be replaced.

Never break tightened bolts loose with a torque wrench. Doing so may break the torque wrench or take it out of calibration.

Torque wrenches should be calibrated on an annual basis.

When using a torque multiplier with a torque wrench, incorrect settings will be multiplied by the ratio of the torque wrench.

Never use an impact driver on a torque multiplier.

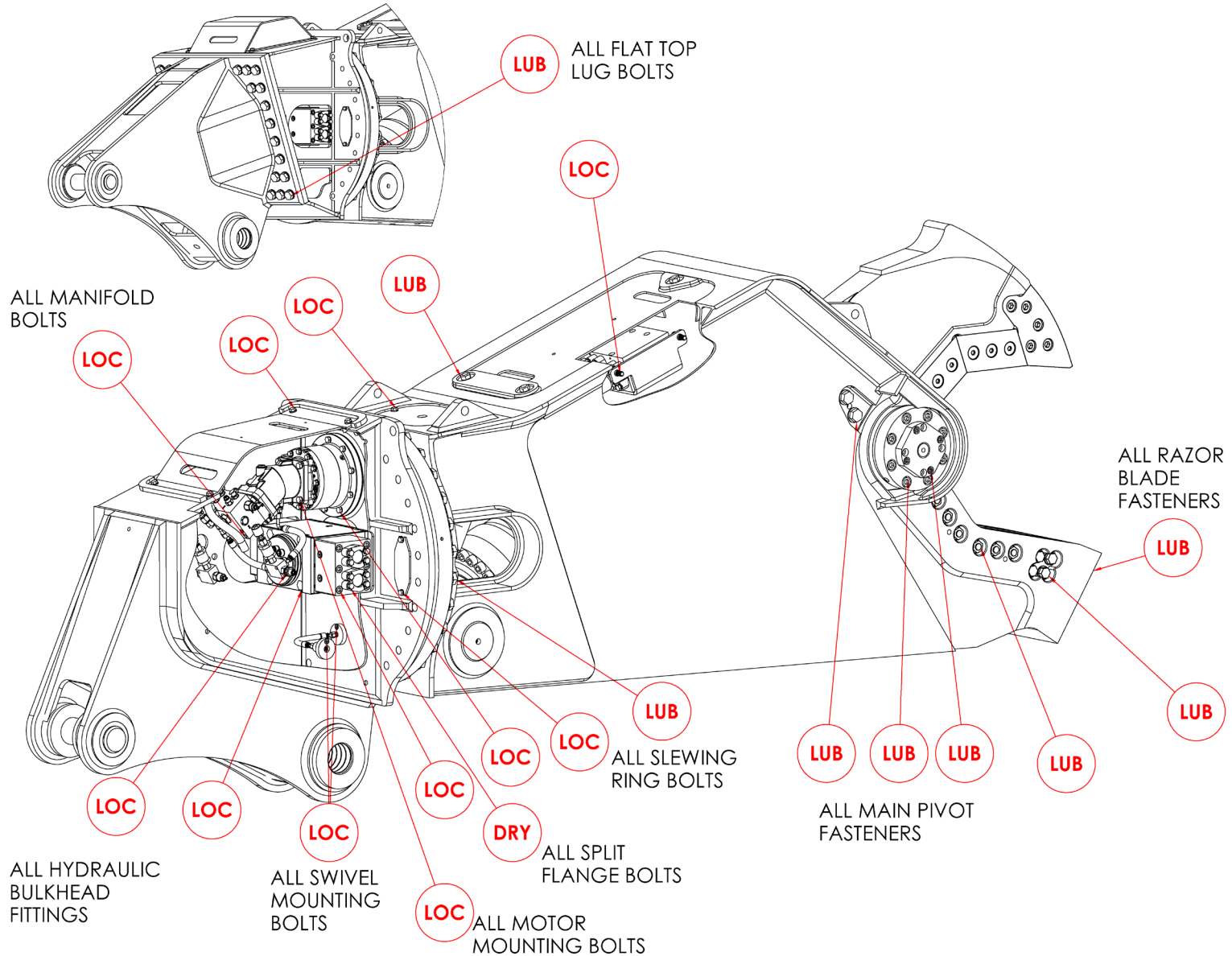


# THREAD TREATMENT DIAGRAM

## Mobile Shears

Use this diagram to determine what thread treatment, if any, is required for each fastener.

For thread treatment application procedures, see page 26. For prescribed torque values, see page 28.



# PROCEDURES

Reference the product Thread Treatment Diagrams on page 25 to determine which of the following procedures is required.

## Cleaning

To ensure proper performance of thread treatment and accurate torque values, clean and degrease **all internal and external threads** prior to application of threadlocker, anti-seize or primer and before installation of hardware.

- Ensure both internal and external threads are free of dirt or debris.
- Use brake cleaner or similar cleaning solvent on all threads to remove any grease or oil.
- Allow threads to dry.

## NOTICE

Failure to properly clean threads will cause threadlocker, primer, and/or anti-seize to not properly cure!

LOC

## Threadlocker

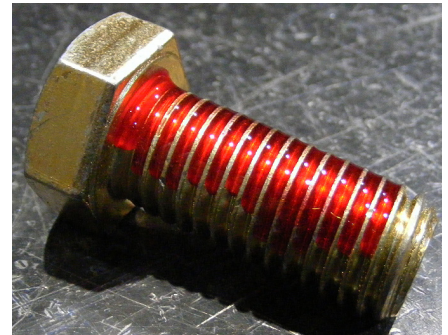
For bolted connections requiring threadlocker, use **Loctite 263** or equivalent applied using the following procedure:

- Clean and degrease all threads.
- For thru holes or nuts, apply threadlocker to bolt threads.
- For blind holes, apply stripe of threadlocker along the length of the hole (applying to the bolt can cause escaping air to remove threadlocker as the bolt is inserted).
- Torque bolt to specified **Wet Torque Value**, see page 28.

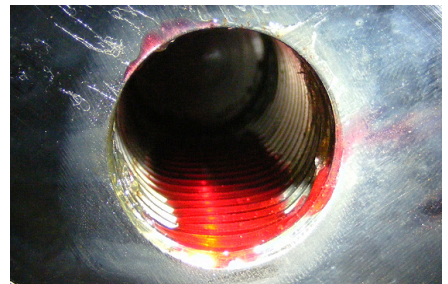
For threaded hydraulic fitting connections, use **Loctite 5452** or equivalent thread sealant in conjunction with **Loctite 7471** primer using the following procedure:

- Clean and degrease all threads.
- Apply Loctite 7471 primer to both external and internal threads and allow to dry.
- Apply threadlocker to 360 degrees of the threads on the male fitting, ensuring adequate coverage.
- Assemble fitting per directions in operator's manual.
- For O-ring boss and flat face O-ring connections, torque fittings to values specified on page 29.

Threadlocker



Blind Hole



Hydraulic Fitting



## PROCEDURES

LUB

### Anti-Seize

For bolted connections requiring anti-seize lubrication, use **Loctite LB8008** or equivalent using the following procedure:

- Clean and degrease all threads.
- Apply thin coat of anti-seize to internal and external threads and under bolt head and/or nut, ensuring complete coverage.
- Torque bolt to specified **Wet Torque Value**, see page 28.

Anti-Seize

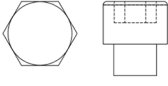
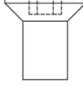


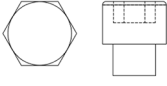
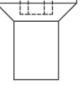
DRY

### No Thread Treatment

- Clean and degrease all threads.
- Torque bolt to specified **Dry Torque Value**, see page 28.

# BOLT TORQUE SPECIFICATIONS

<b>Dry Torque Values</b>					
		<b>Hex/Socket Head</b>		<b>Flat Head</b>	
					
Fastener Grade	Size x Pitch	Nm	Ft-lb	Nm	Ft-lb
CL 10.9	M8 x 1.25	35	26	27	20
	M10 x 1.50	71	53	58	42
	M12 x 1.75	124	92	101	73
	M14 x 1.50	200	148	163	118
	M14 x 2.00	200	148	163	118
	M16 x 2.00	311	230	254	184
	M20 x 1.50	610	450	498	360
	M20 x 2.50	608	449	497	359
	M24 x 3.00	1054	778	861	622
	M27 x 3.00	1543	1138	1260	910
	M30 x 3.50	2095	1545	1712	1236
	M36 x 4.00	3659	2699	2991	2159
8	1/4-20	14	11	11	8
	5/16-18	32	24	26	19
	3/8-16	59	44	48	35
	7/16-14	94	70	77	56
	1/2-13	143	106	116	84
	1/2-20	162	120	133	96
	5/8-11	287	212	234	169
	3/4-10	509	376	415	300
	7/8-9	821	606	670	484
	1.00-8	1232	909	1007	727
	1.00-14	1383	1020	1130	816
	1.25-7	2463	1817	2013	1453
L9	1.50-6	4287	3162	3504	2529

<b>Wet Torque Values</b>					
		<b>Hex/Socket Head</b>		<b>Flat Head</b>	
					
Fastener Grade	Size x Pitch	Nm	Ft-lb	Nm	Ft-lb
CL 10.9	M8 x 1.25	29	22	23	17
	M10 x 1.50	61	45	49	36
	M12 x 1.75	105	78	85	62
	M14 x 1.50	150	111	121	88
	M14 x 2.00	170	126	138	100
	M16 x 2.00	265	196	216	156
	M20 x 1.50	456	337	372	269
	M20 x 2.50	517	382	422	305
	M24 x 3.00	894	660	731	528
	M27 x 3.00	1312	968	1072	774
	M30 x 3.50	1779	1312	1453	1049
	M36 x 4.00	3110	2294	2542	1835
8	1/4-20	13	10	11	8
	5/16-18	27	20	22	16
	3/8-16	50	37	40	29
	7/16-14	80	59	65	47
	1/2-13	122	90	99	72
	1/2-20	138	102	112	81
	5/8-11	244	180	199	144
	3/4-10	433	320	354	256
	7/8-9	698	515	570	412
	1.00-8	1046	772	854	617
	1.00-14	1175	867	960	693
	1.25-7	2095	1545	1712	1236
L9	1.50-6	3644	2688	2979	2150

# O-RING BOSS & FLAT FACE O-RING TORQUE SPECIFICATIONS

O-Ring Boss Torque Values		
Size Dash	Nm	Ft-lb
-4	22	16
-5	27	20
-6	36	26
-8	83	60
-10	110	80
-12	187	135
-14	249	180
-16	304	220
-20	387	280
-24	498	360

Flat Face O-Ring Torque Values		
Size Dash	Nm	Ft-lb
-4	18	13
-6	30	22
-8	60	44
-10	85	62
-12	121	88
-14	121	88
-16	160	116
-20	213	154
-24	274	198

# BOLT DRIVE SPECIFICATIONS

Thread Size x Pitch	Hex Head	Socket Head	Flat Head
			
<b>Wrench/Drive Size</b>			
M8 x 1.25	13mm	6mm	5mm
M10 x 1.50	17mm	8mm	6mm
M12 x 1.75	19mm	10mm	8mm
M14 x 1.50	22mm	12mm	10mm
M14 x 2.00	22mm	12mm	10mm
M16 x 2.00	24mm	14mm	10mm
M20 x 1.50	30mm	17mm	12mm
M20 x 2.50	30mm	17mm	12mm
M24 x 3.00	36mm	19mm	14mm
M27 x 3.00	41mm	19mm	-
M30 x 3.50	46mm	22mm	-
M36 x 4.00	55mm	27mm	-
1/4-20	7/16"	3/16"	5/32"
5/16-18	1/2"	1/4"	3/16"
3/8-16	9/16"	5/16"	7/32"
7/16-14	5/8"	3/8"	1/4"
1/2-13	3/4"	3/8"	5/16"
1/2-20	3/4"	3/8"	5/16"
5/8-11	15/16"	1/2"	3/8"
3/4-10	1-1/8"	5/8"	1/2"
7/8-9	1-5/16"	3/4"	9/16"
1.00-8	1-1/2"	3/4"	5/8"
1.00-14	1-1/2"	3/4"	5/8"
1.25-7	1-7/8"	7/8"	7/8"
1.50-6	2-1/4"	1"	1"

# WARRANTY

## **Claim Procedure**

Notify the Genesis Service Department of the potential warranty claim prior to making the repair. Digital pictures are very helpful for diagnosing problems and recommending repairs.

Contact the Genesis Service Department before making alterations, changes or repairs to any component that is going to be considered for warranty. Not doing so will void all Genesis warranty consideration.

The Genesis Service Department will issue an authorization number to track the repair costs, outgoing parts, and/or defective parts returning to the factory.

Replacement parts must be ordered using a purchase order number. Shipping is standard ground. Overnight shipping is available by request, and Genesis will not cover the shipping charge.

When the repair is complete, submit an invoice to the Genesis Service Department within 30 days. Include itemized internal labor reporting, parts lists and invoices for outside contractors. Reference the authorization number on all invoices.

When returning parts for warranty consideration, include a copy of any related Genesis paperwork along with any other necessary documentation to ensure proper processing and credit. The Genesis Service Department will provide the necessary forms.

Your account will be credited when the warranty claim is accepted.

## **Blade Warranty**

Standard warranty on blades will only be considered on the first edge, and wear on the edge must be 1/8" radius or less. Genesis does not warranty cutting blades that are cracked or broken from top to bottom (perpendicular to the long edge of the blade). Genesis also does not cover fasteners, the labor to replace wear components or collateral damage, such as blade seats, from broken blades, the piercing blade tang or adjustment plates.

**Please direct any questions to the Genesis Service Department: 715-395-5252**



# PARTS ORDER POLICY AND PROCEDURE

## **Parts Orders Should Include**

- Purchase order number
- Model and serial number of attachment
- Part number and quantity needed
- Shipping and billing address
- Method of shipment or required delivery date

## **Placing Orders**

Orders may be placed by phone or e-mail. To e-mail an order, use the form on the following page or your purchase order form. Contact information is located at the front of this manual.

## **Part Numbers**

Part numbers are listed in a separate Parts Manual or, if included, the Parts section of this manual. Contact the Genesis Parts Department with questions regarding part numbers, availability and pricing.

## **Shipping**

All orders will be shipped best way surface unless an alternate shipping method is requested. Shipping charges are not included in the purchase price of parts.

## **Invoices**

All invoices are due upon receipt. Any accounts with invoices open beyond 60 days are subject to review and may be placed on C.O.D. status without further notice.

## **Returns**

Many unused Genesis parts may be returned with proper documentation. Return shipping is the responsibility of the purchaser. Credit will be issued upon return, less a 25% restocking fee. Documentation is required for credit of returned parts. Contact the Genesis Service Department at 715-395-5252 for an RGA (Return Goods Authorization) number and form. An RGA must accompany every return. Items shipped without an RGA may be returned to sender.

## **Warranty Returns**

All parts returned to Genesis for warranty consideration must be returned with a completed RGA (Return Goods Authorization) provided by the Genesis Service Department. The form needs to be completed in its entirety, including any additional information requested by the Service Department. Return shipping is the responsibility of the sender and will be credited upon claim approval. A determination to accept or deny the claim will be made based upon the information available to Genesis. Warranty on purchased parts other than wear components is 6 months. Genesis does not cover labor costs to replace purchased parts replaced under warranty. There is no warranty period on wear parts or components.





**PARTS ORDER FORM**

Customer: \_\_\_\_\_ Date: \_\_\_\_\_

Phone: \_\_\_\_\_ Contact: \_\_\_\_\_

Shipping Address: \_\_\_\_\_ E-mail: \_\_\_\_\_

\_\_\_\_\_ Billing Address: \_\_\_\_\_

\_\_\_\_\_

Purchase Order: \_\_\_\_\_ Shipping Method: \_\_\_\_\_

Model: \_\_\_\_\_ Serial Number: \_\_\_\_\_

Quantity	Part Number	Description	Price

E-mail to the Genesis Parts Department: [genesisparts@genesisattachments.com](mailto:genesisparts@genesisattachments.com)  
For assistance, call 715-395-5252

# INDEX

1101957 Mach Blade Razor	7	6300980 Hex Head Capscrew - OS	23
1102442 Mach Thrust Washer	5	6300981 Hex Head Capscrew - OS	23
1102444 Mach End Cap	5	6300982 Socket Head Capscrew - OS	23
1102446 Mach Tie Rod Nut	5	6300983 Socket Head Capscrew - OS	23
1102448 Shim Set Thrust Washer	5	6300984 Socket Head Capscrew - OS	23
1102486 Wldt Pin (Front) Long	13	6300985 Anode - OS	23
1102487 Mach Pin Keeper	13	6300986 Bushing - OS	23
1102832 Mach Blade Tip RH	9	6300987 Bearing Ring - OS	23
1102833 Mach Blade Tip LH	9	6300988 Capped T-Seal - OS	23
1102857 Mach Bolt Socket Head Capscrew 1¼ - 7 x 4½	9	6300989 Back-Up Washer - OS	23
1102939 Mach Blade	7, 9	6300990 Back-Up Washer - OS	23
1103124 Mach Main Shaft	5	6300991 O-Ring - OS	23
1103125 Mach Bearing RH	5	6300992 Back-Up Washer - OS	23
1103126 Mach Bearing LH	5	6300993 Kuvel Seal - OS	23
1103170 Mach Pin Rear	13	6300994 O-Ring - OS	23
1103172 Mach Pin Keeper Rear	13	6300995 O-Ring - OS	23
1103276 Plt Spacer Port Block	19	6300996 Rod Bearing - OS	23
1103278 Assy Port Block	17	6300997 Rod Bearing - OS	23
1103334 Mach Blade Guide	7	6300998 Buffer Seal - OS	23
1103373 Mach Auto Guide	11	6300999 Special Wiper - OS	23
1103375 Mach Auto Guide Adjustment Plate	11	6301000 Special Wiper - OS	23
1103792 Mach Tie Rod	5	6301001 Seal Kit - OS	23
1104001 Mach Port Block	19	6350040 Sub-Assembly Cylinder B14.0 R9.0 S32.75	21
1104265 Wtmg Upper	5	6350054 Assembly Piston Tube - OS	23
1104357 Mach Adjustment Plate	7	6350055 Assembly Butt and Tube - OS	23
1104358 Mach Adjustment Plate	7	6350056 Piston - OS	23
1104361 Mach Adjustment Plate	7	6350057 Gland - OS	23
1104515 Shim Set Blade	7, 9	6390015 Manifold Regen Bypass	21
1104562 24-6WR13-24FLH9062-24FLH62-42.15	15	Assembly Auto Guide	10, 11
1105152 Mach Adjustment Plate	7	Assembly Bracket	16, 17
1106064 Wldt Cover	15	Assembly Cylinder	20, 21
1106112 Mach Washer Plt	19	Assembly Cylinder Access	14, 15
1106354 Wtmg Stick	5	Assembly Cylinder Pins	12, 13
1200049 Hose 32-6WR13-32FLH9062-32FLH62-43.16	21	Assembly Lower Shear Blades	6, 7
1201235 Assembly Cylinder B14.00 R9.00 S32.75	15	Assembly Pivot Group	4, 5
3100061 Mach Bearing Upper	13	Assembly Port Block	18, 19
3100721 Shim Set Guide	11	Assembly Upper Shear Blades	8, 9
5511806 Wldt Bracket Kit	17	Bolt Drive Specifications	30
6100145 Shim 0.005	11	Bolt Torque Specifications	24, 28
6100146 Shim 0.010	11	Contact Information	2, 36
6100147 Shim 0.020	11	F0112030 Hex Head Capscrew M12 x 1.75 x 30	15
6100316 Shim 0.005	7, 9	F0112040 Hex Head Capscrew M12 x 1.75 x 40	5
6100317 Shim 0.010	7, 9	F0112050 Hex Head Capscrew M12 x 1.75 x 50	19
6100318 Shim 0.020	7, 9	F0116030 Hex Head Capscrew M16 x 2.00 x 30	15
6200002 Grease Fitting	5, 11, 13	F0116080 Hex Head Capscrew M16 x 2.00 x 80	19
6200078 Shackle Double Swing	17	F0120070 Hex Head Capscrew M20 x 2.5 x 70	21
6300054 Plug Socket Head 08MB	19	F0124180 Hex Head Capscrew M24 x 3 x 180	21
6300079 Plug Socket Head 20MB	19	F0210175 Hex Head Capscrew 1 - 8 x 1¼	7
6300134 Dowel Pin	7	F0210450 Hex Head Capscrew 1 - 8 x 5½	7
6300153 Plug Socket Head 06MB	19	F0210500 Hex Head Capscrew 1 - 8 x 5	11
6300733 O-Ring - High Pressure Seal	21	F0410035 Flat Head Capscrew M10 x 1.5 x 35	11
6300978 Port Cover - OS	23	F0412030 Flat Head Capscrew M12 x 1.75 x 30	5
6300979 Port Cover - OS	23	F0510550 Flat Head Capscrew 1 - 8 x 5½	9
		F0510600 Flat Head Capscrew 1 - 8 x 6	7, 9
		F0510800 Flat Head Capscrew 1 - 8 x 8	9

# INDEX

F0612045 Socket Head Capscrew M12 x 1.75 x 45	5
F0620100 Socket Head Capscrew M20 x 2.50 x 100	5
F0620130 Socket Head Capscrew M20 x 2.50 x 130	13
F0620200 Socket Head Capscrew M20 x 2.50 x 2.00	13
F0910008 Hex Nut 1 - 8	7, 9
F1020250 Nylock Hex Nut	13, 15
F1201224 Flat Washer M12	5, 15
F1201630 Flat Washer M16	19
F1202037 Flat Washer M20	5
F1202444 Flat Washer M24	21
F1300100 Flat Washer 1"	7, 9, 11
F1401200 Lock Washer M12	19
F1402000 Lock Washer M20	21
F2510100 Set Screw Socket Head 1 - 8 x 1	7
H0262125 Split Flange Half 1.25	19
H0262150 Split Flange Half 1.50	15
H0362125 Split Flange Plug 1.25	19
H0662200 Split Flange Half	21
O-Ring Boss & Flat Face O-Ring Torque Specifica- tions	29
Parts Order Form	33
Parts Order Policy and Procedure	32
Procedures	26, 27
S0190222 O-Ring 1.25	19
S0190225 O-Ring 1.50	15
S0190228 O-Ring	21
S0190244 O-Ring	5
Sub-Assembly Cylinder - OS	22, 23
Table of Contents	3
Thread Treatment Diagram	25
Warranty	31



**GENESIS®**

The Promise of Performance.

## CONTACT INFORMATION

### Genesis Attachments

1000 Genesis Drive  
Superior, WI 54880 USA

Toll Free: 888-SHEAR-IT  
(888-743-2748)

Phone: 715.395.5252

E-mail:  
info@genesisattachments.com

### Europe/Africa/Middle East Genesis GmbH

Teramostrasse 23  
87700 Memmingen, Germany

Phone: +49 83 31 9 25 98 0

Fax: +49 83 31 9 25 98 80

genesis-europe.com

E-mail:  
info@genesis-europe.com

### Asia Pacific Representative Office

24 Upper Serangoon View #12-28  
Singapore 534205

Phone: +65 9673 9730

E-mail:  
tchoo@genesisattachments.com

### Central America & Colombia

Cra 13A #89-38 / Ofi 613  
Bogota, Colombia

Phone: +57 1 610 8160 / 795 8747

E-mail:  
contact@themsagroup.com

View and download all manuals: [genesisattachments.com/manuals](http://genesisattachments.com/manuals)  
Patents: [genesisattachments.com/products/patents](http://genesisattachments.com/products/patents)