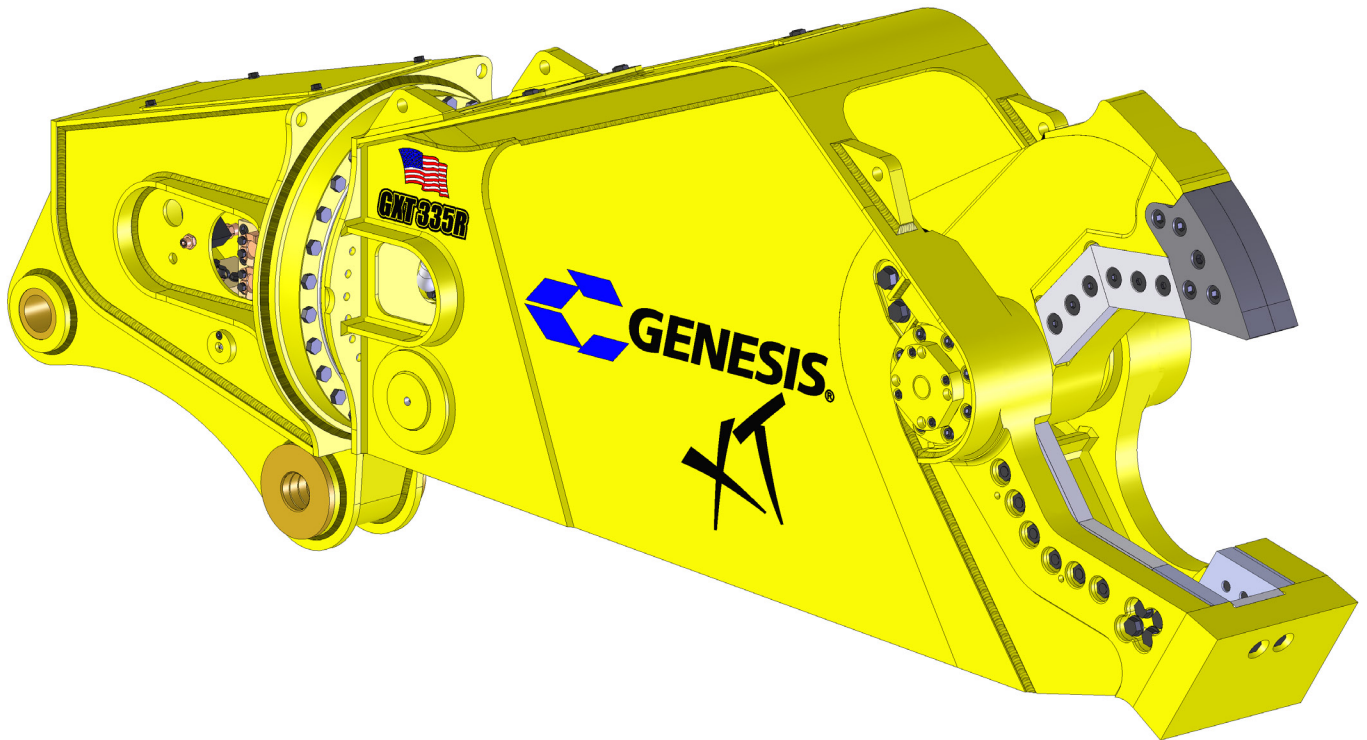


GENESIS®

The Promise of Performance.

GXT 335R Mobile Shear

PARTS MANUAL



CONTACT INFORMATION

World Headquarters Genesis Attachments

1000 Genesis Drive
Superior, WI 54880 USA

Toll Free: 888-SHEAR-IT
(888-743-2748)

Phone: 715.395.5252
Fax: 715.395.5255

E-mail:
info@genesisattachments.com

Europe/Africa/Middle East Genesis GmbH

Teramostrasse 23
87700 Memmingen, Germany

Phone: +49 83 31 9 25 98 0
Fax: +49 83 31 9 25 98 80
genesis-europe.com

E-mail:
info@genesis-europe.com

Asia Pacific Representative Office

24 Upper Serangoon View #12-28
Singapore 534205

Phone: +65 9673 9730

E-mail:
tchoo@genesisattachments.com

Central & South America, The Caribbean

Cra 13A #89-38 / Ofi 613
Bogota, Colombia

Phone: +57 1 610 8160 / 795 8747

E-mail:
contact@themsagroup.com

Brazil

Avenida Araça, 1677
Campinas - São Paulo

Phone: +55 19 9 9989-8803

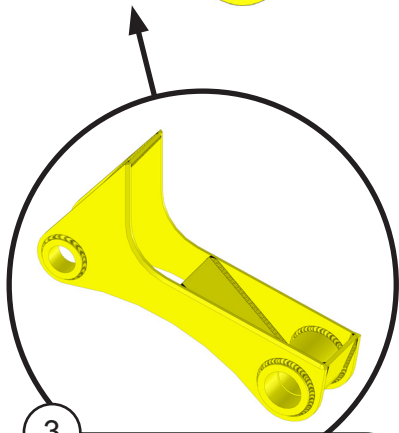
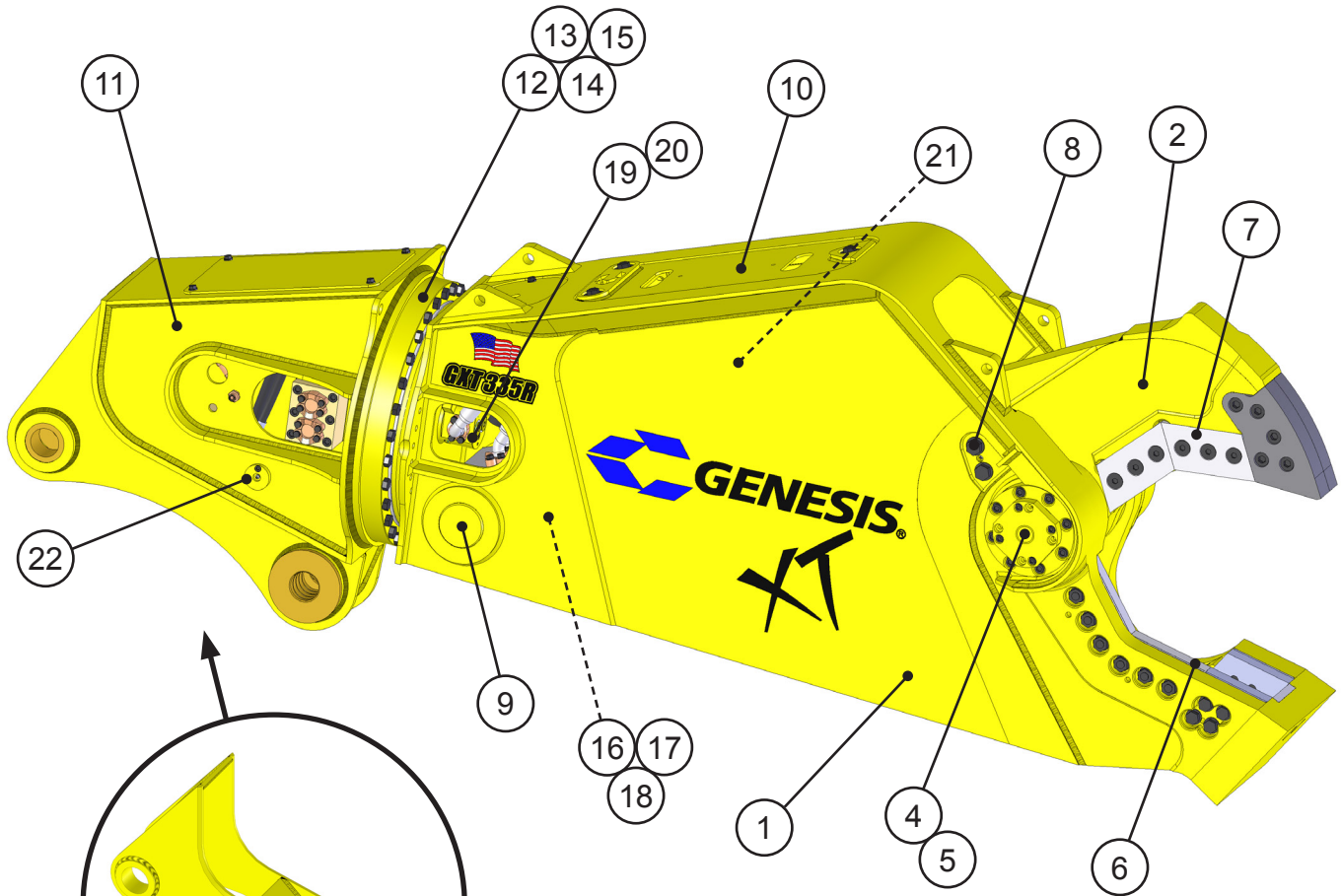
E-mail:
gel@themsagroup.com

View and download all manuals at genesisattachments.com/manuals.asp
Patents: genesisattachments.com/patents

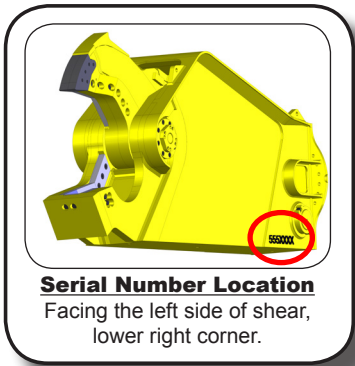
TABLE OF CONTENTS

CONTACT INFORMATION.....	2
GENERAL ARRANGEMENT.....	4
ASSEMBLY PIVOT GROUP - RIGHT SIDE.....	6
ASSEMBLY PIVOT GROUP - LEFT SIDE.....	8
ASSEMBLY LOWER BLADES.....	10
ASSEMBLY UPPER BLADES.....	12
ASSEMBLY AUTO GUIDE.....	14
ASSEMBLY CYLINDER PINS.....	16
ASSEMBLY ACCESS COVERS.....	18
ASSEMBLY UPPER HEAD.....	20
ASSEMBLY ROTATION.....	22
ASSEMBLY ROTATION CIRCUIT.....	24
SUB-ASSEMBLY ROTATE CROSS-OVER / C'BAL.....	26
SUB-ASSEMBLY LINE MOUNT MANIFOLD.....	28
ASSEMBLY OPEN AND CLOSE CIRCUIT.....	30
ASSEMBLY CYLINDER 6350084 - B12.0 R8.0 S22.00.....	32
ASSEMBLY CYLINDER PACKING KIT - SK00120.....	34
ASSEMBLY SWIVEL MANIFOLD - 6350097.....	36
ASSEMBLY SWIVEL MANIFOLD PACKING KIT - SK00124.....	38
REGEN BLOCK SUB-ASSEMBLY.....	40
ASSEMBLY SLEWING RING LUBRICATION.....	42
WARRANTY.....	44
PARTS ORDER POLICY AND PROCEDURE.....	45
PARTS ORDER FORM.....	46
INDEX.....	47
CONTACT INFORMATION.....	49

GENERAL ARRANGEMENT



3
Wtmq Lug Upper Head
 Part Number is Serial Number specific.
 For replacement parts call the Genesis
 Parts Department.
USA **Europe**
 715-395-5614 +49 83 31 9 25 98 0
 715-395-3405



GENERAL ARRANGEMENT

ITEM	QTY	PART NUMBER	DESCRIPTION
1	1	1106835	Wtmg Stick
2	1	1106871	Wtmg Upper
3		* Note Below	Wtmg Lug Upper Head
4		See page 6	Assembly Pivot Group - Right Side
5		See page 8	Assembly Pivot Group - Left Side
6		See page 10	Assembly Lower Blades
7		See page 12	Assembly Upper Blades
8		See page 14	Assembly Auto Guide
9		See page 16	Assembly Cylinder Pins
10		See page 18	Assembly Access Covers
11		See page 20	Assembly Upper Head
12		See page 22	Assembly Rotation
13		See page 24	Assembly Rotation Circuit
14		See page 26	Sub-Assembly Rotate Cross-over / C'bal
15		See page 28	Sub-Assembly Line Mount Manifold
16		See page 30	Assembly Open and Close Circuit
17		See page 32	Assembly Cylinder
18		See page 34	Assembly Cylinder Packing Kit
19		See page 36	Assembly Swivel Manifold
20		See page 38	Assembly Swivel Manifold Seal Kit
21		See page 40	Sub-Assembly Regen Block
22		See page 42	Assembly Slewing Ring Lubrication

* Wtmg Lug Upper Head Part Number is Serial Number specific. For replacement parts call the Genesis Parts Department.

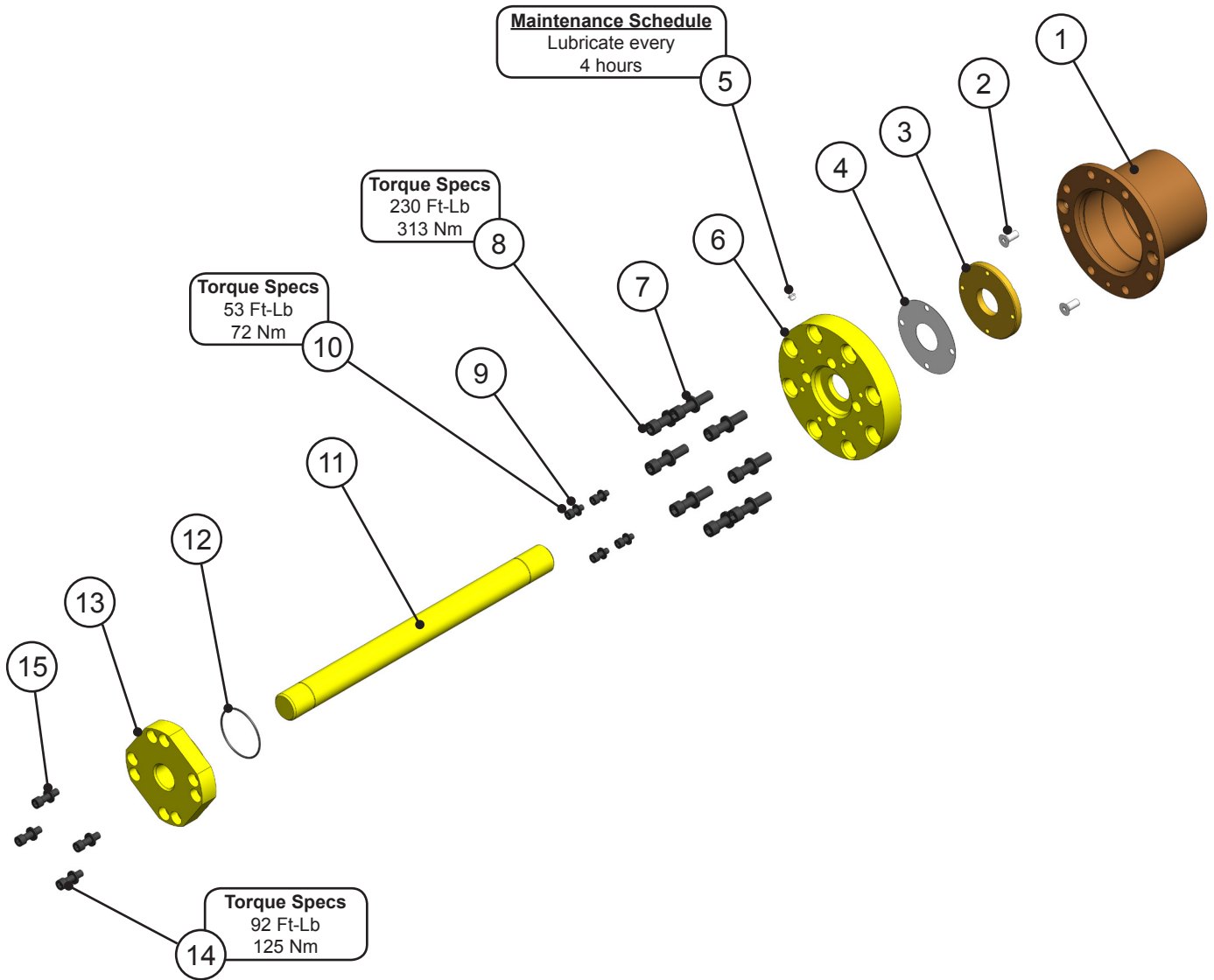
USA

715-395-5614
715-395-3405

Europe

+49 83 31 9 25 98 0

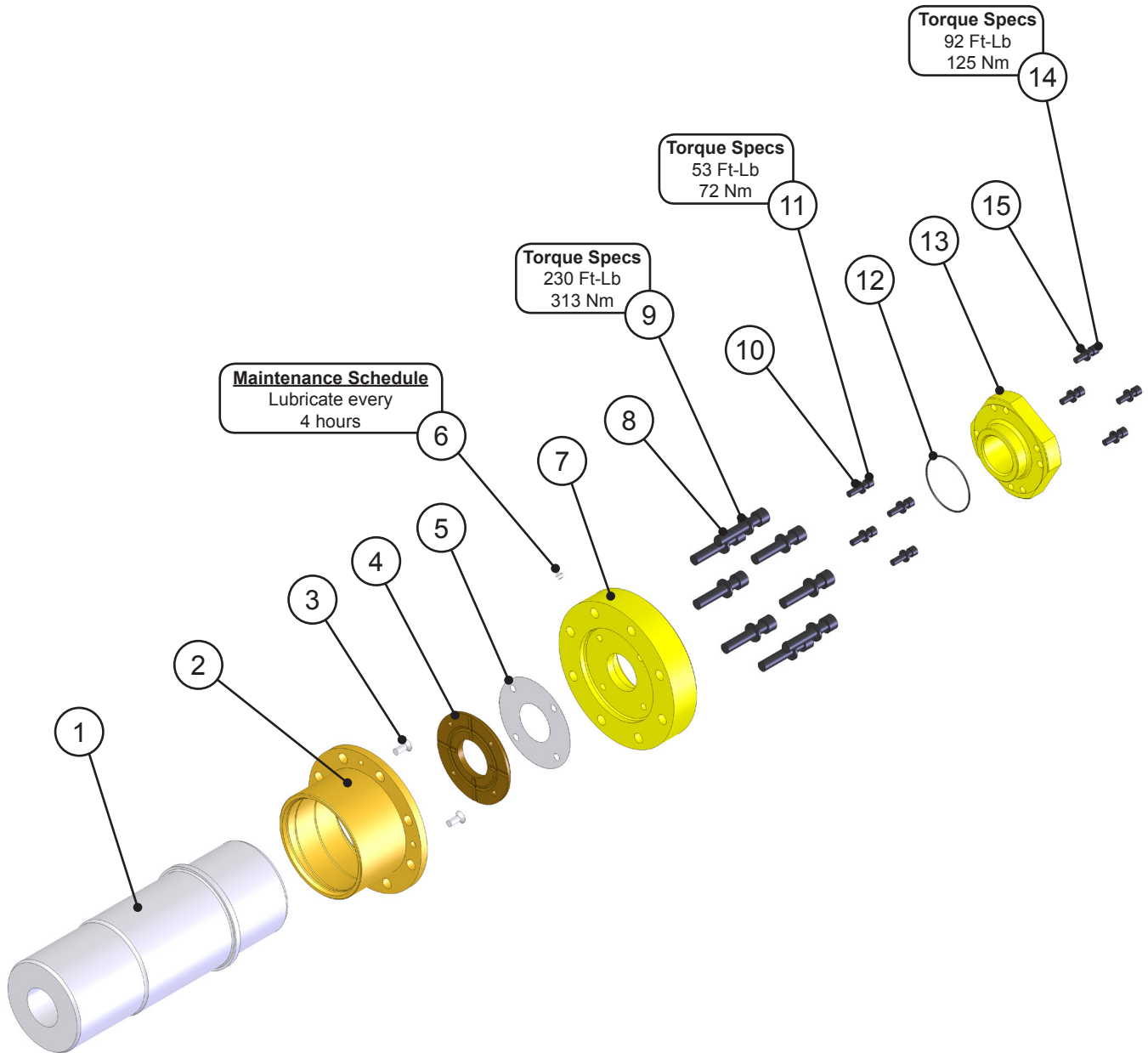
ASSEMBLY PIVOT GROUP - RIGHT SIDE



ASSEMBLY PIVOT GROUP - RIGHT SIDE

ITEM	QTY	PART NUMBER	DESCRIPTION
1	1	1106874	Mach Bearing RH
2	2	F0412030	Flat Head Capscrew M12 x 1.75 x 30
3	1	1106886	Mach Thrust Washer
4	1	1106882	Shim Set Thrust Washer
5	1	6200002	Grease Fitting
6	1	1106883	Mach End Cap
7	8	F1201630	Flat Washer M16
8	8	F0616070	Socket Head Capscrew M16 x 2 x 70
9	4	F1201021	Flat Washer M10
10	4	F0610025	Socket Head Capscrew M10 x 1.50 x 25
11	1	1106885	Mach Tie Rod
12	1	S0190238	O-Ring
13	1	1106542	Mach Tie Rod Nut
14	4	F0612040	Socket Head Capscew M12 x 1.75 x 40
15	4	F1201224	Flat Washer M12

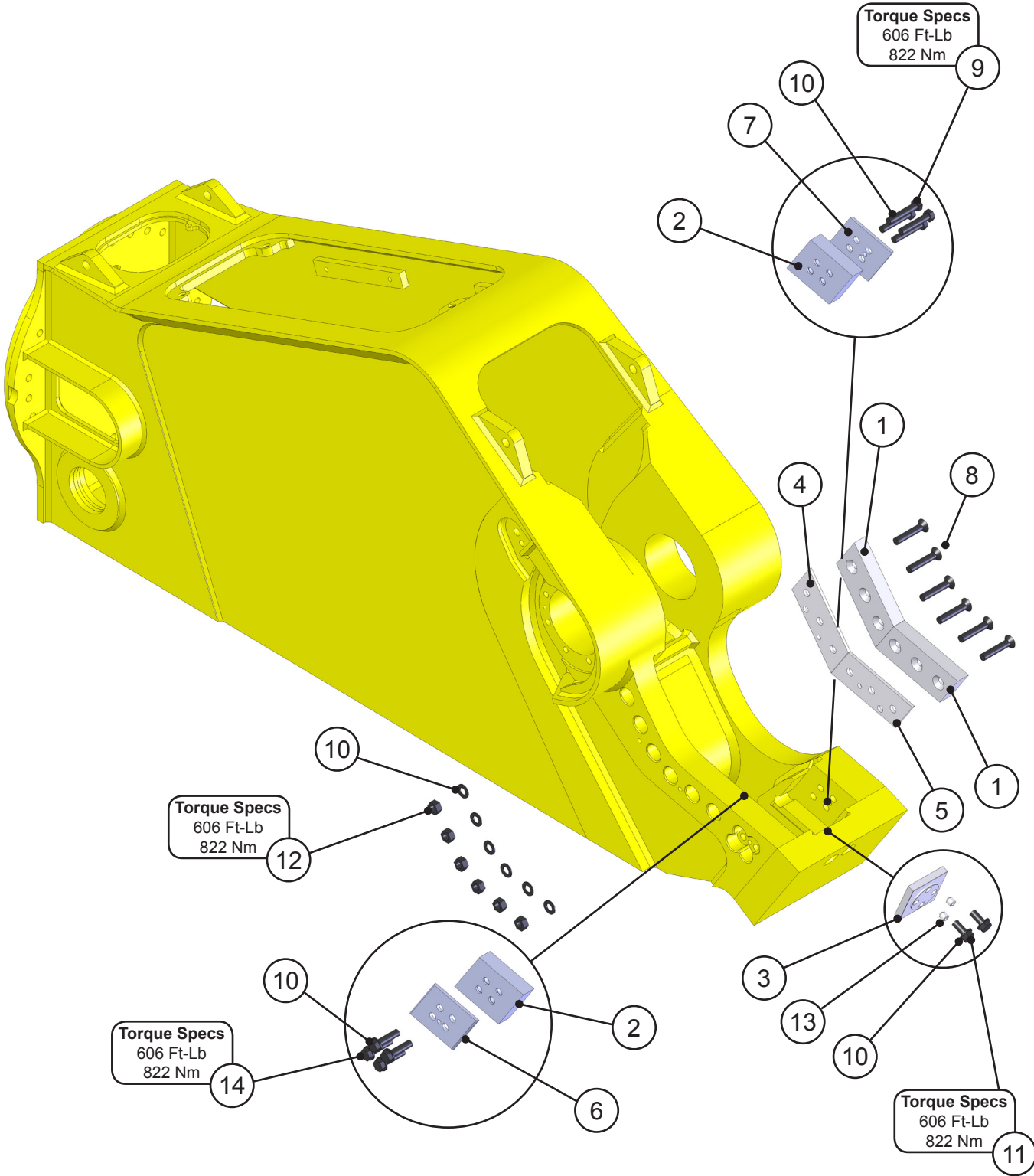
ASSEMBLY PIVOT GROUP - LEFT SIDE



ASSEMBLY PIVOT GROUP - LEFT SIDE

ITEM	QTY	PART NUMBER	DESCRIPTION
1	1	1106880	Mach Main Shaft
2	1	1106875	Mach Bearing LH
3	2	F0412030	Flat Head Capscrew M12 x 1.75 x 30
4	1	1106886	Mach Thrust Washer
5	1	1106882	Shim Set Thrust Washer
6	1	6200002	Grease Fitting
7	1	1106883	Mach End Cap
8	8	F1201630	Flat Washer M16
9	8	F0616070	Socket Head Capscrew M16 x 2 x 70
10	4	F1201021	Flat Washer M10
11	4	F0610025	Socket Head Capscrew M10 x 1.50 x 25
12	1	S0190238	O-Ring
13	1	1106542	Mach Tie Rod Nut
14	4	F0612040	Socket Head Capscrew M12 x 1.75 x 40
15	4	F1201224	Flat Washer M12

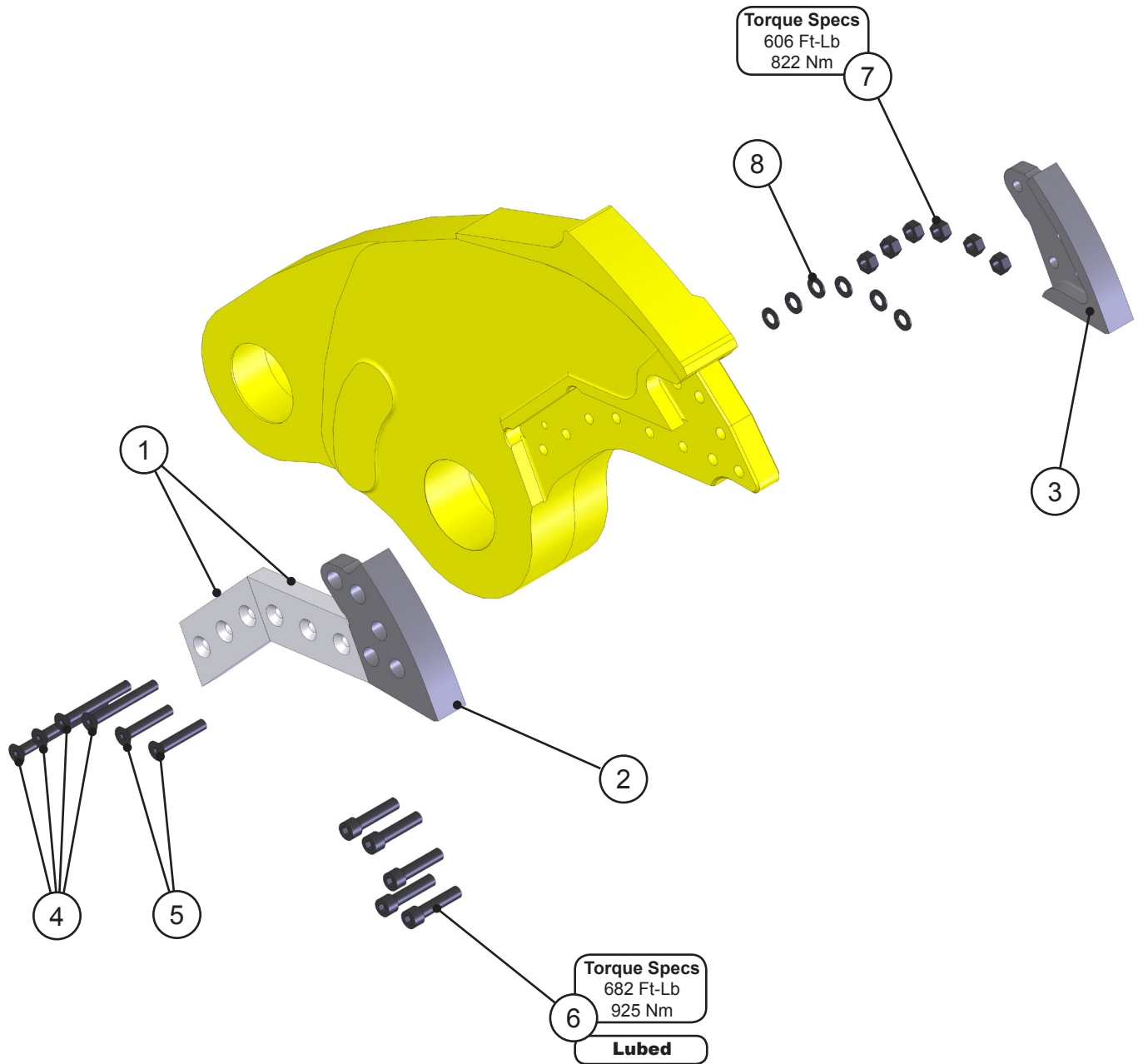
ASSEMBLY LOWER BLADES



ASSEMBLY LOWER BLADES

ITEM	QTY	PART NUMBER	DESCRIPTION
1	2	1106876	Mach Blade
2	2	1105941	Mach Blade Guide
3	1	1101955	Mach Blade Razor
4	1	1106877	Mach Adjust Plate
5	1	1106879	Mach Adjust Plate
6	1	1106413	Mach Guide Blade Adjust Plate
7	1	1106414	Mach Guide Blade Adjust Plate
8	6	F0588450	Flat Head Capscrew .88-9 x 4.50
9	4	F0288450	Hex Head Capscrew .88-9 x 4.50
10	16	F1300088	Flat Washer Narrow .88
11	2	F0288200	Hex Head Capscrew .88-9 x 2.00
12	6	F0908809	Hex Nut .88-9
13	2	F2588088	Set Screw Socket Head .88-9 x .88
14	4	F0288350	Hex Head Capscrew .88-9 x 3.50
SHIM SET			
		1105397	Shim Set, Blade
		1106477	Shim Set, Guide Blade

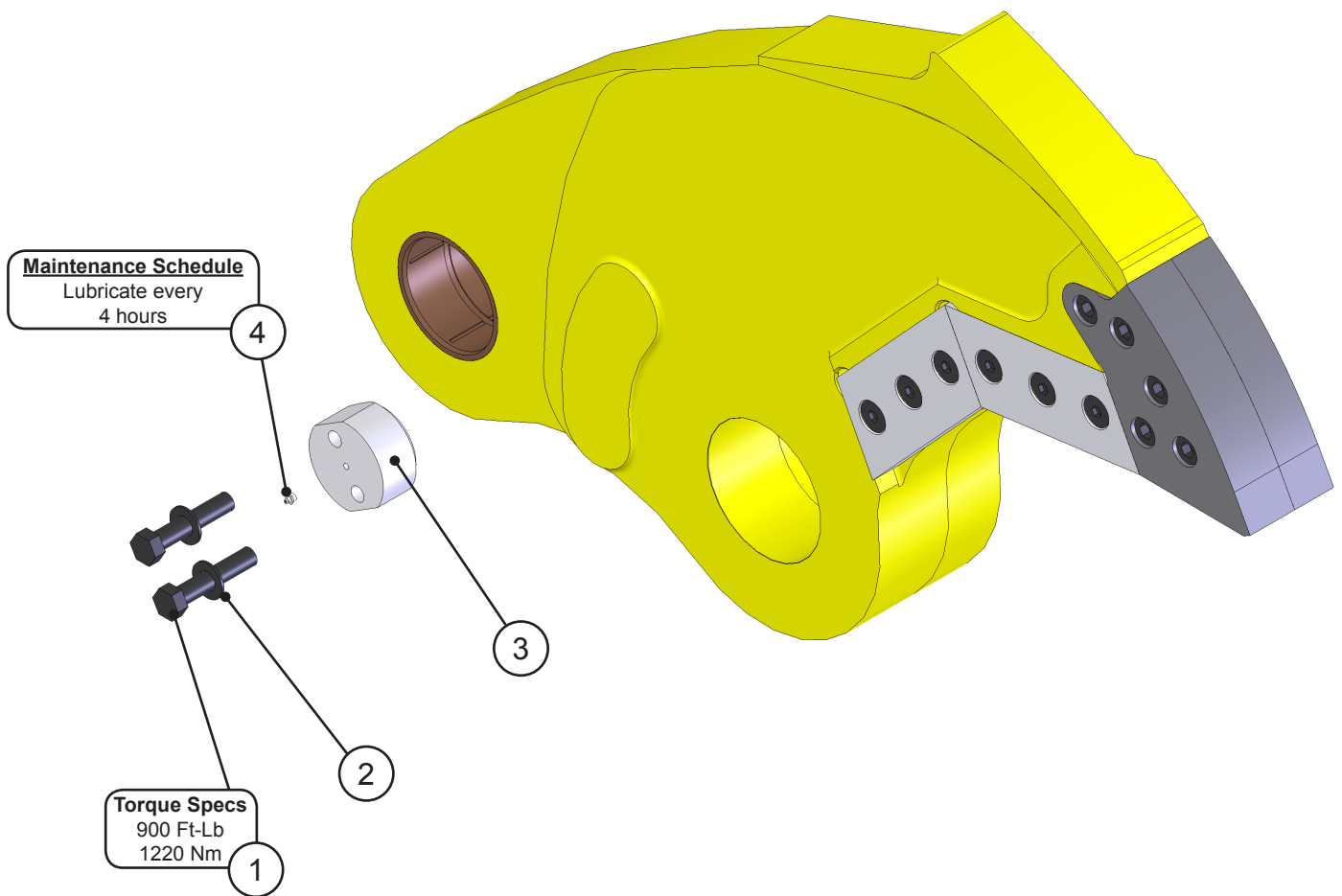
ASSEMBLY UPPER BLADES



ASSEMBLY UPPER BLADES

ITEM	QTY	PART NUMBER	DESCRIPTION
1	2	1106876	Mach Blade
2	1	1105939	Mach Blade Tip Right
3	1	1105940	Mach Blade Tip Left
4	4	F0588600	Flat Head Capscrew .88-9 x 6.00
5	2	F0588500	Flat Head Capscrew .88-9 x 5.00
6	5	1103609	Mach Bolt Socket Head Capscrew 1.00-8 x 4.50
7	6	F0908809	Hex Nut .88-9
8	6	F1300088	Flat Washer Narrow .88

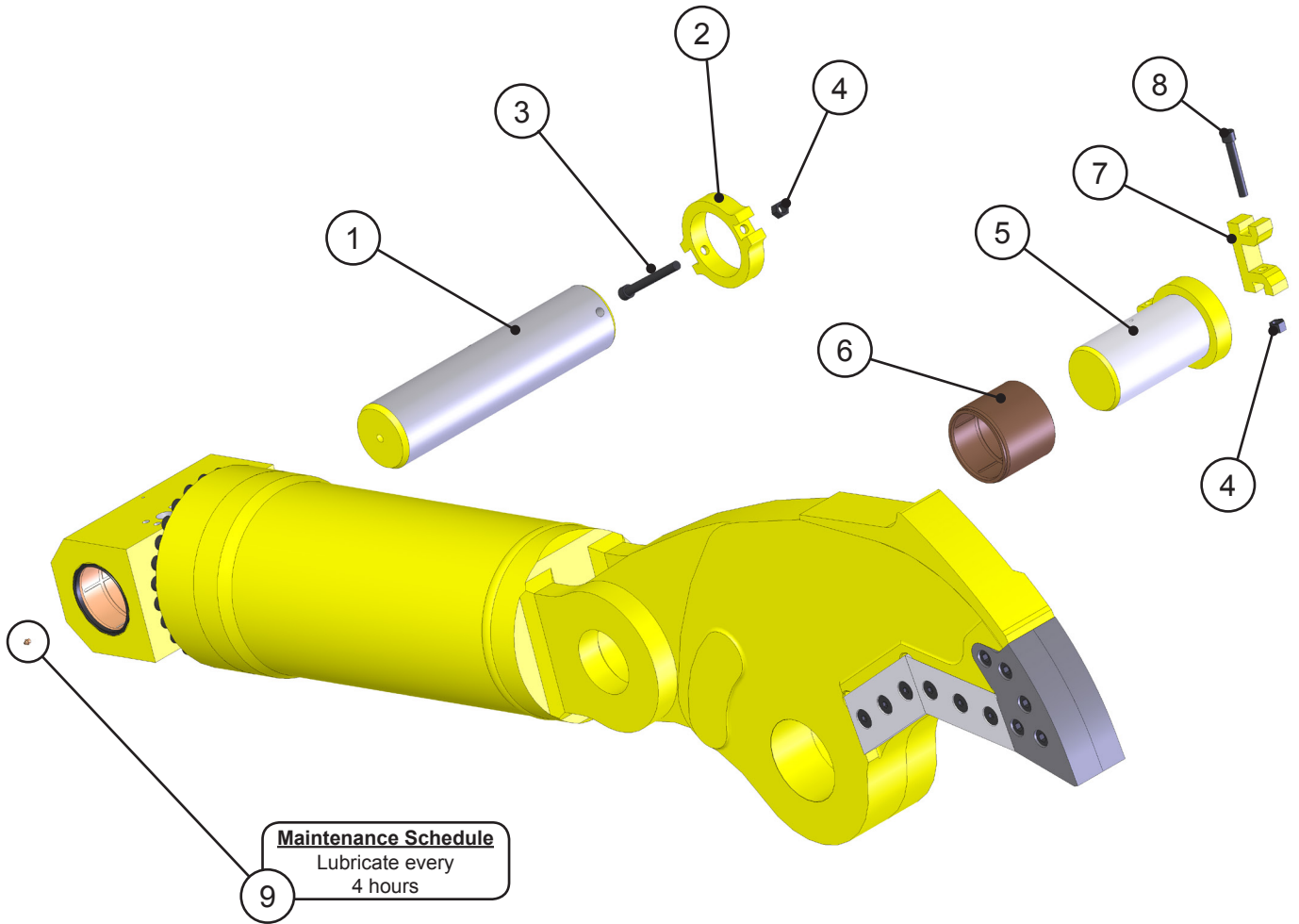
ASSEMBLY AUTO GUIDE



ASSEMBLY AUTO GUIDE

ITEM	QTY	PART NUMBER	DESCRIPTION
1	2	F0210400	Hex Head Capscrew 1.00-8 x 4.00
2	2	F1300100	Flat Washer Narrow 1.00
3	1	1105992	Mach Auto Guide
4	1	6200002	Grease Fitting
SHIM SET			
		1106478	Shim Set, Auto Guide

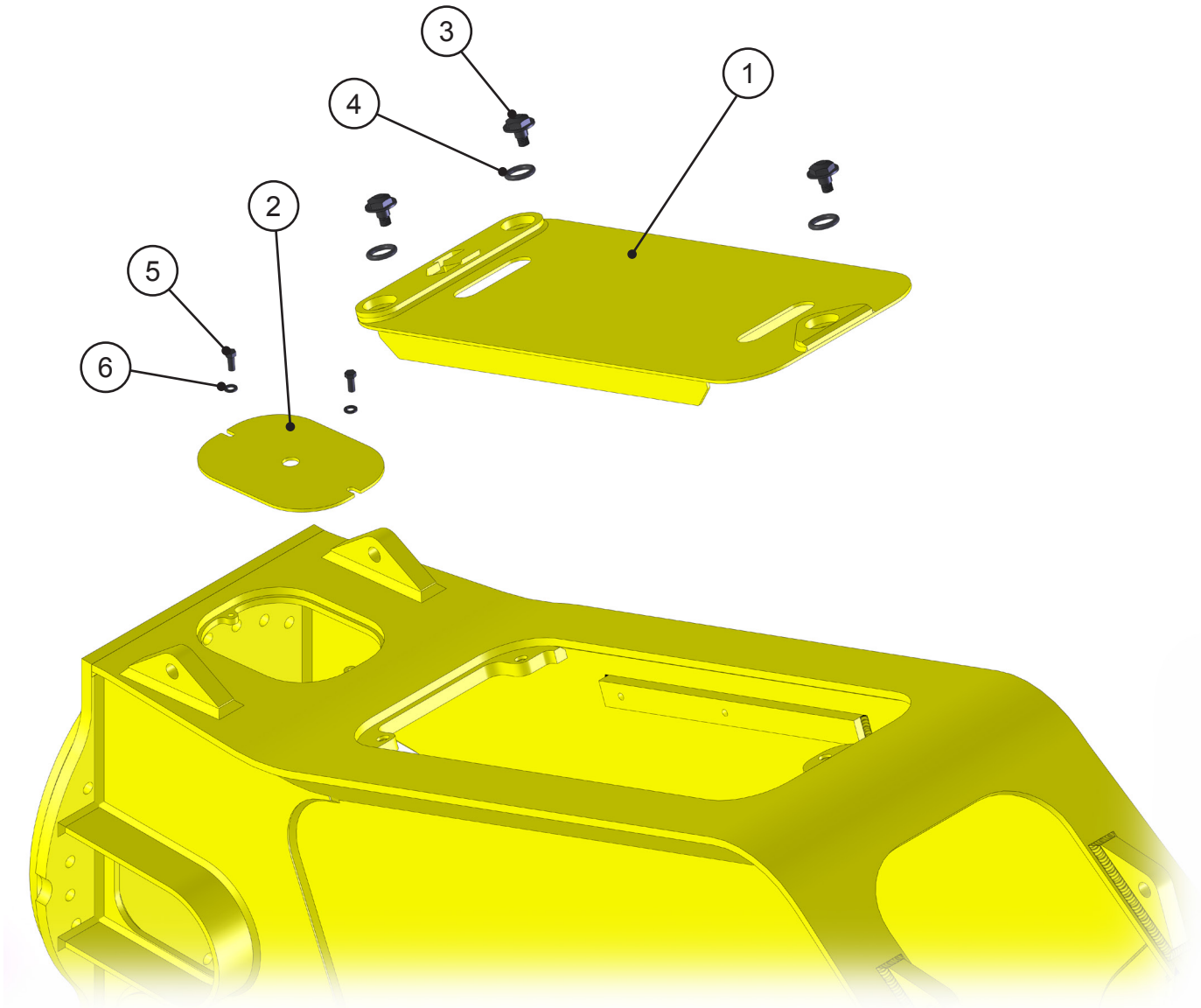
ASSEMBLY CYLINDER PINS



ASSEMBLY CYLINDER PINS

ITEM	QTY	PART NUMBER	DESCRIPTION
1	1	1106889	Mach Rear Cyl Pin
2	1	1103607	Mach Pin Keeper Rear
3	1	F0620180	Socket Head Capscrew M20 x 2.50 x 180
4	2	F1020250	Nylock Hex Nut M12 x 2.50
5	1	1106888	Wldt Front Cyl Pin
6	1	3100133	Mach Bearing Upper Cylinder Connection
7	1	3500350	Mach Pin Keeper (Clevis)
8	1	F0620100	Socket Head Capscrew M20 x 2.50 x 100
9	1	6200002	Grease Fitting

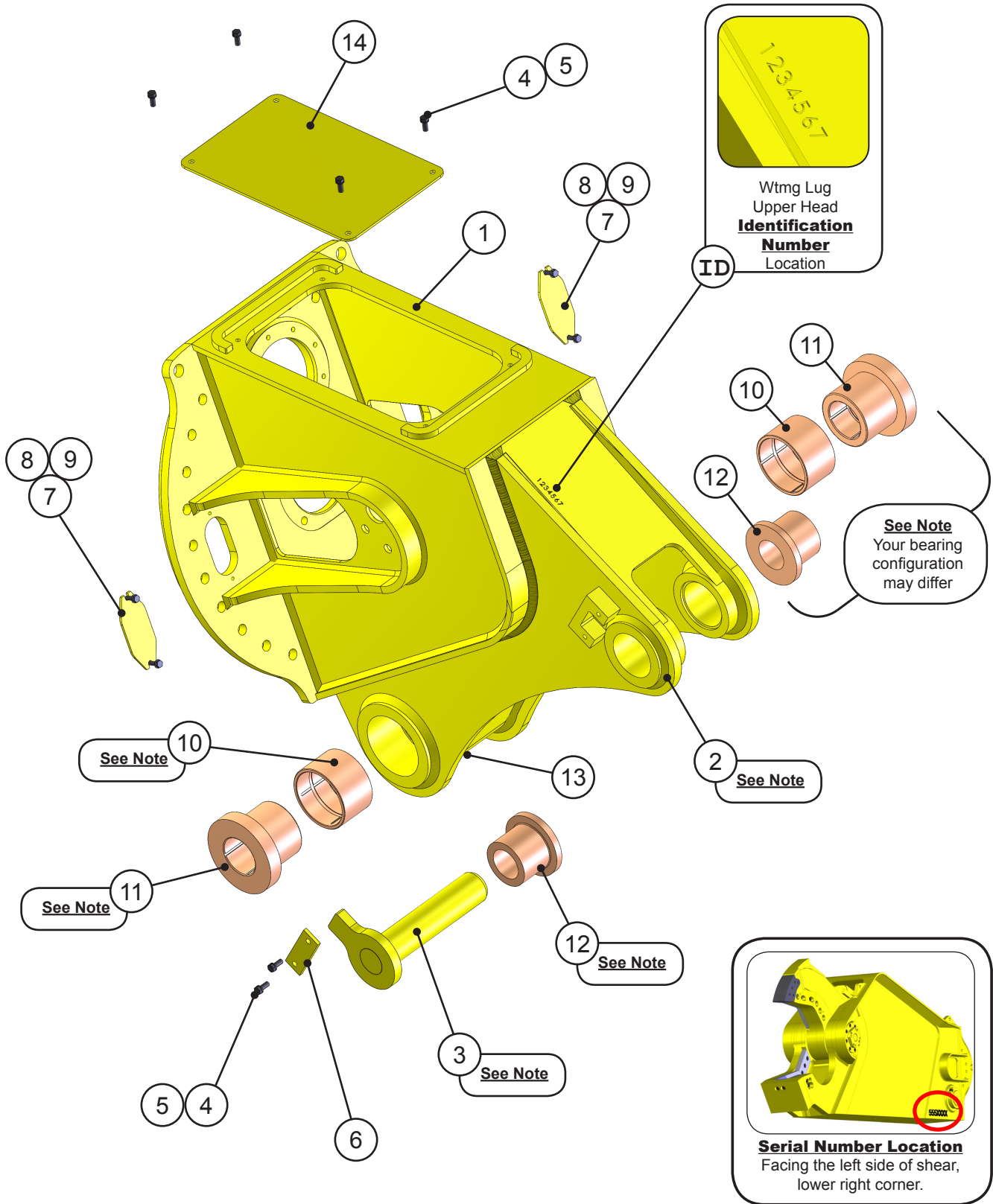
ASSEMBLY ACCESS COVERS



ASSEMBLY ACCESS COVERS

ITEM	QTY	PART NUMBER	DESCRIPTION
1	1	1106894	Wldt Cover
2	1	1105868	Plt Rear Cover
3	2	1105854	Mach Flange Shoulder Bolt
4	2	6301112	O-Ring
5	2	F0112020	Hex Head Capscrew M12 x 1.75 x 20
6	2	F1201224	Flat Washer M12

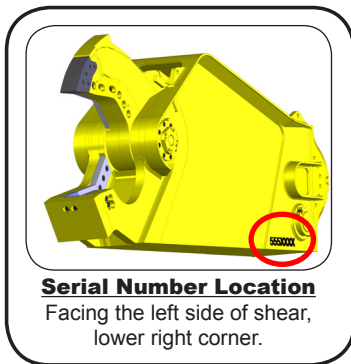
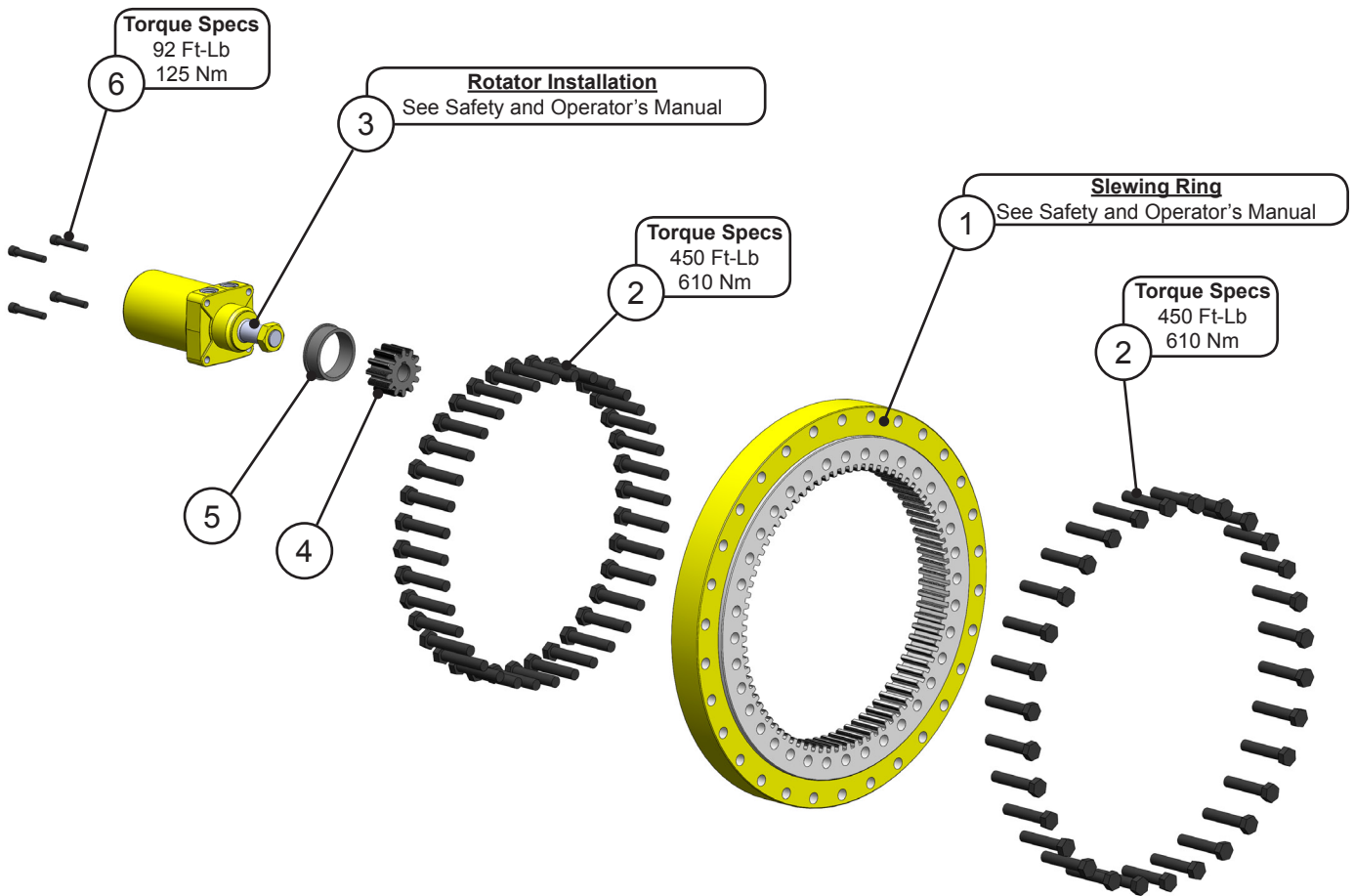
ASSEMBLY UPPER HEAD



ASSEMBLY UPPER HEAD

ITEM	QTY	PART NUMBER	DESCRIPTION						
1	1	5513377	Wtmg Sub Head						
2	1	* Note Below	Wtmg Lug Upper Head						
3	1	* Note Below	Wldt Pin						
4	6	F0112030	Hex Head Capscrew M12 x 1.75 x 30						
5	6	F1201224	Flat Washer M12						
6	1	5500752	Plt Strap						
7	2	1105883	Plt Bolt Cover						
8	4	F0110030	Hex Head Capscrew M10 x 1.50 x 30						
9	4	F1201021	Flat Washer M10						
10	2	* Note Below	Mach Bearing						
11	2	* Note Below	Mach Boom Bearing						
12	2	* Note Below	Mach Spacer Sleeve						
13	1	6200002	Grease Fitting						
14	1	5513499	Wtmg Sub Head Cover						
<p>* Wtmg Lug Upper Head Part Number is Serial Number specific. For replacement parts call the Genesis Parts Department.</p> <table style="width: 100%; border: none;"> <tr> <td style="text-align: center; width: 50%;">USA</td> <td style="text-align: center; width: 50%;">Europe</td> </tr> <tr> <td style="text-align: center;">715-395-5614</td> <td style="text-align: center;">+49 83 31 9 25 98 0</td> </tr> <tr> <td style="text-align: center;">715-395-3405</td> <td></td> </tr> </table>				USA	Europe	715-395-5614	+49 83 31 9 25 98 0	715-395-3405	
USA	Europe								
715-395-5614	+49 83 31 9 25 98 0								
715-395-3405									

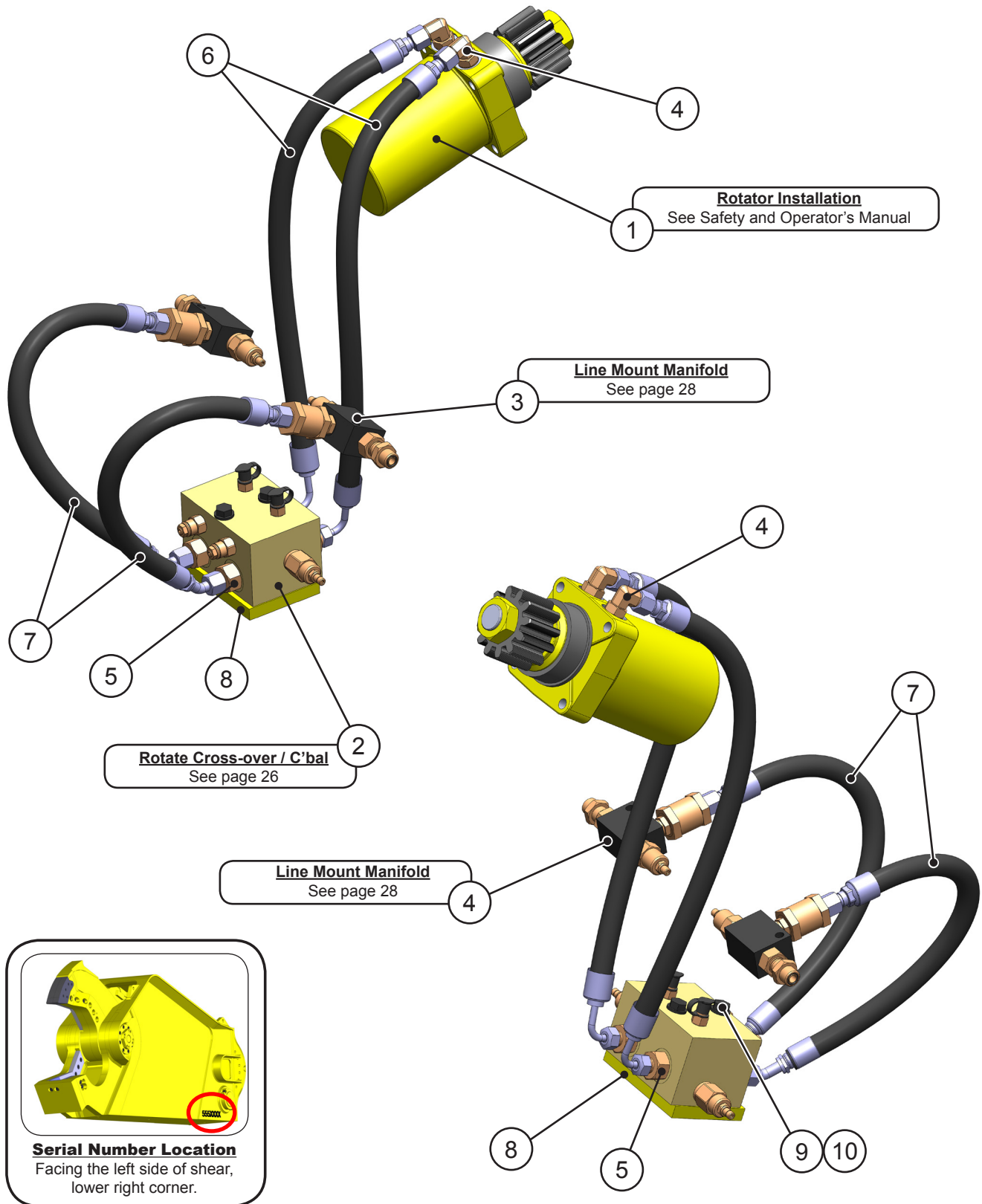
ASSEMBLY ROTATION



ASSEMBLY ROTATION

ITEM	QTY	PART NUMBER	DESCRIPTION
1	1	6100092	Bearing Slewing
2	66	F0120100	Hex Head Capscrew M20 x 2.5 x 100
3	1	6300159	Motor
4	1	3100324	Pinion
5	1	3100450	Mach Spacer
6	4	F0612070	Socket Head Capscrew M12 x 1.75 x 70

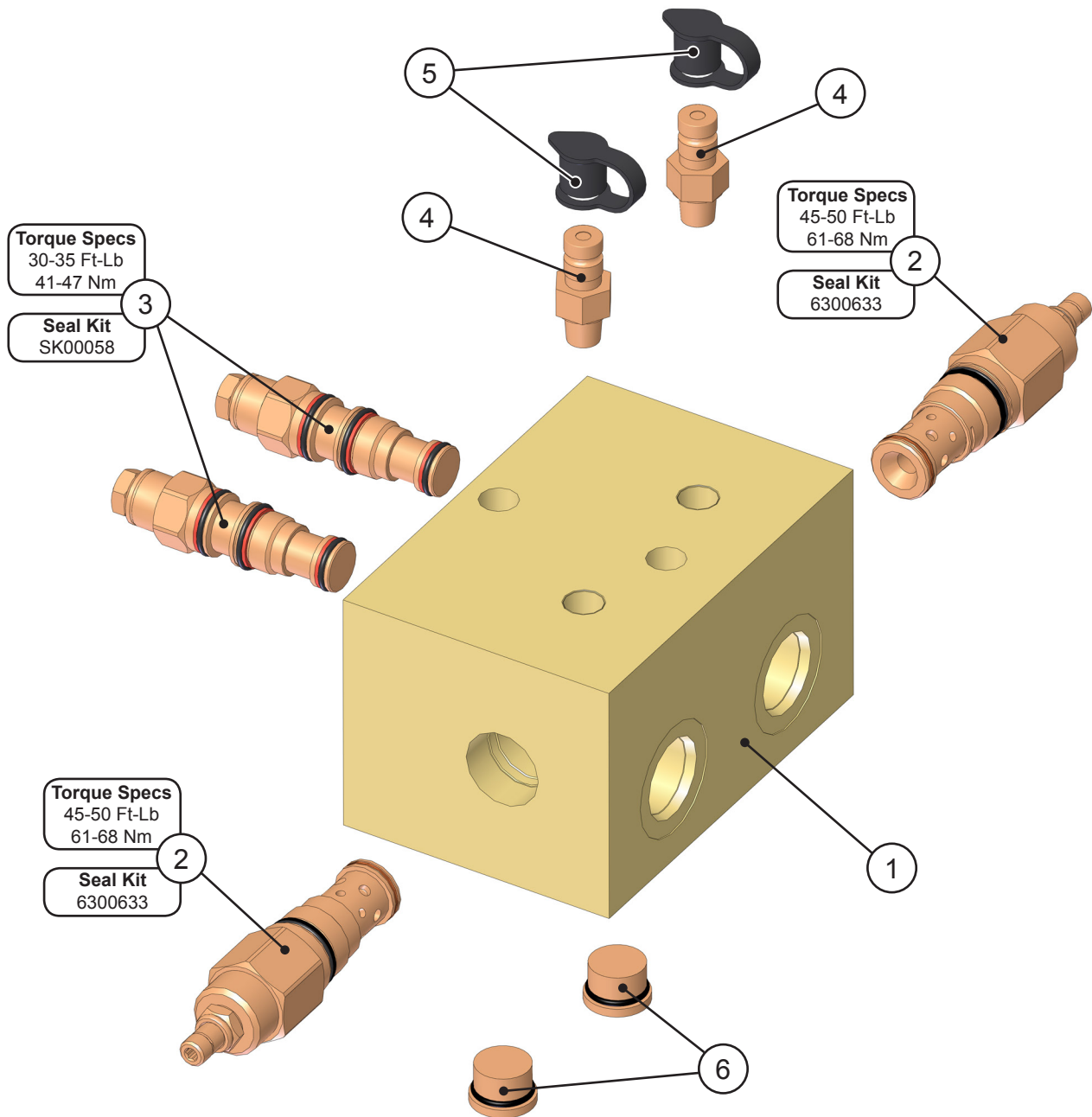
ASSEMBLY ROTATION CIRCUIT



ASSEMBLY ROTATION CIRCUIT

ITEM	QTY	PART NUMBER	DESCRIPTION
1	1	See page 22	Motor Installation
2	1	See page 26	Sub-Assembly Rotate Cross-over / C'bal
3	2	See page 28	Sub-Assembly Line Mount Manifold
4	2	6300305	Adaptor 10MB-08MFFOR-90
5	4	6300052	Adaptor 12MB-08MO
6	2	1106929	Hose 08-2WR16-08FFORX-08FFORX90M-20.50*
7	2	1106928	Hose 08-2WR16-08FFORX-08FFORX45M-20.50*
8	1	1104709	Mach Plt Valve Mount
9	2	F0112100	Hex Head Capscrew M12 x 1.75 x 100
10	2	F1201224	Flat Washer M12
* Estimated length			

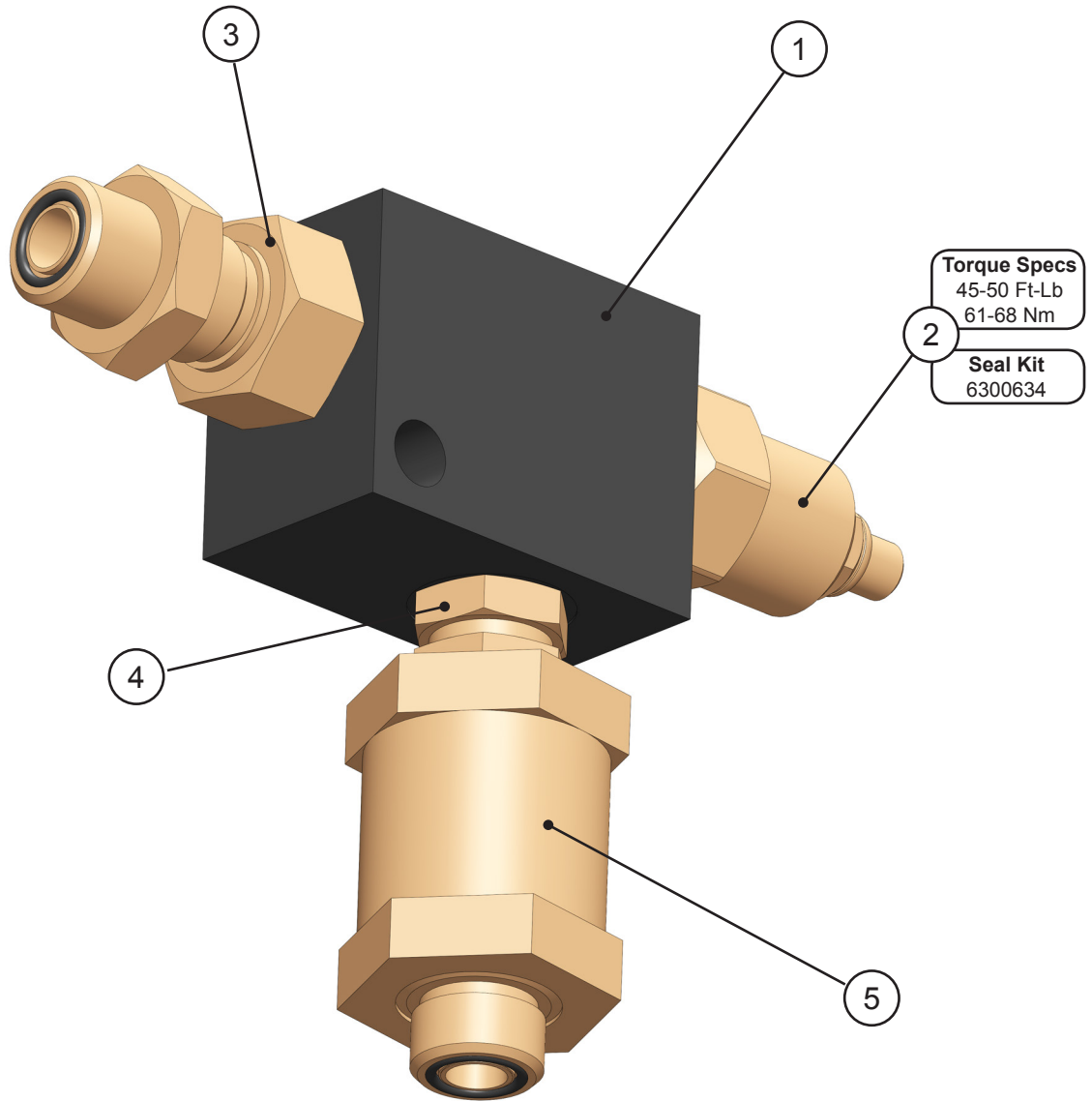
SUB-ASSEMBLY ROTATE CROSS-OVER / C'BAL



SUB-ASSEMBLY ROTATE CROSS-OVER / C'BAL

ITEM	QTY	PART NUMBER	DESCRIPTION
1	1	6380079	Valve Block
2	2	6300501	Valve Relief Seal Kit 6300633
3	2	6380035	Valve Counterbalance Seal Kit SK00058
4	2	6300088	Diagnostic Nipple 04MP
5	2	6310001	Diagnostic Nipple Dust Cap
6	2	6300021	Plug Socket Head 06MB

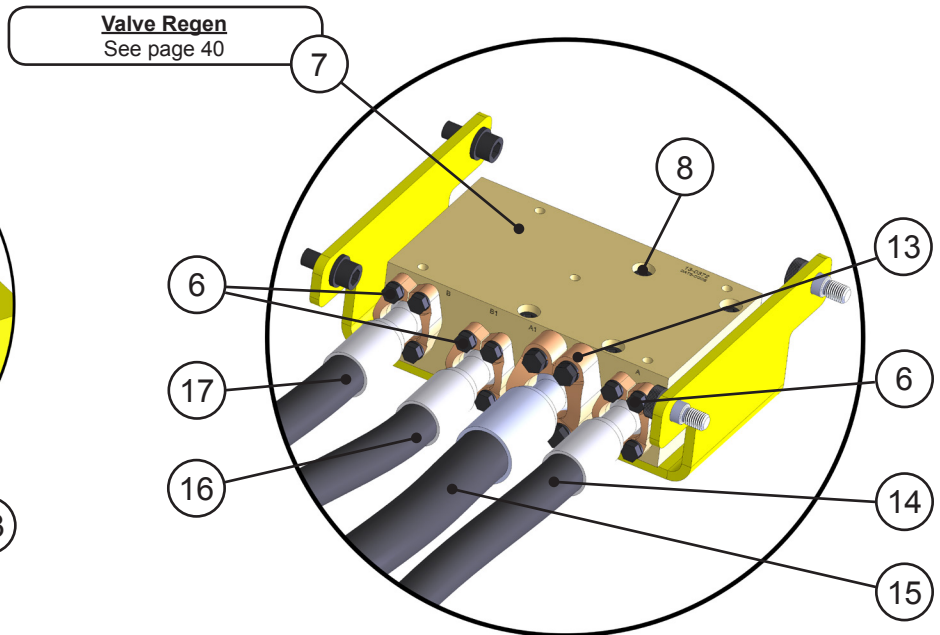
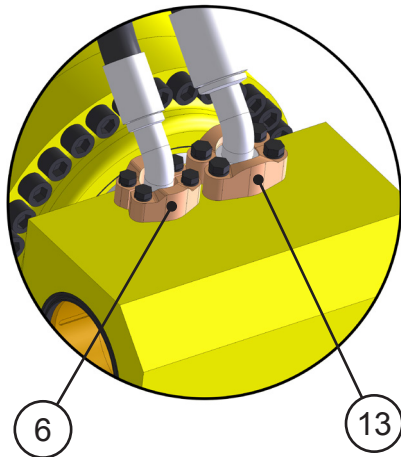
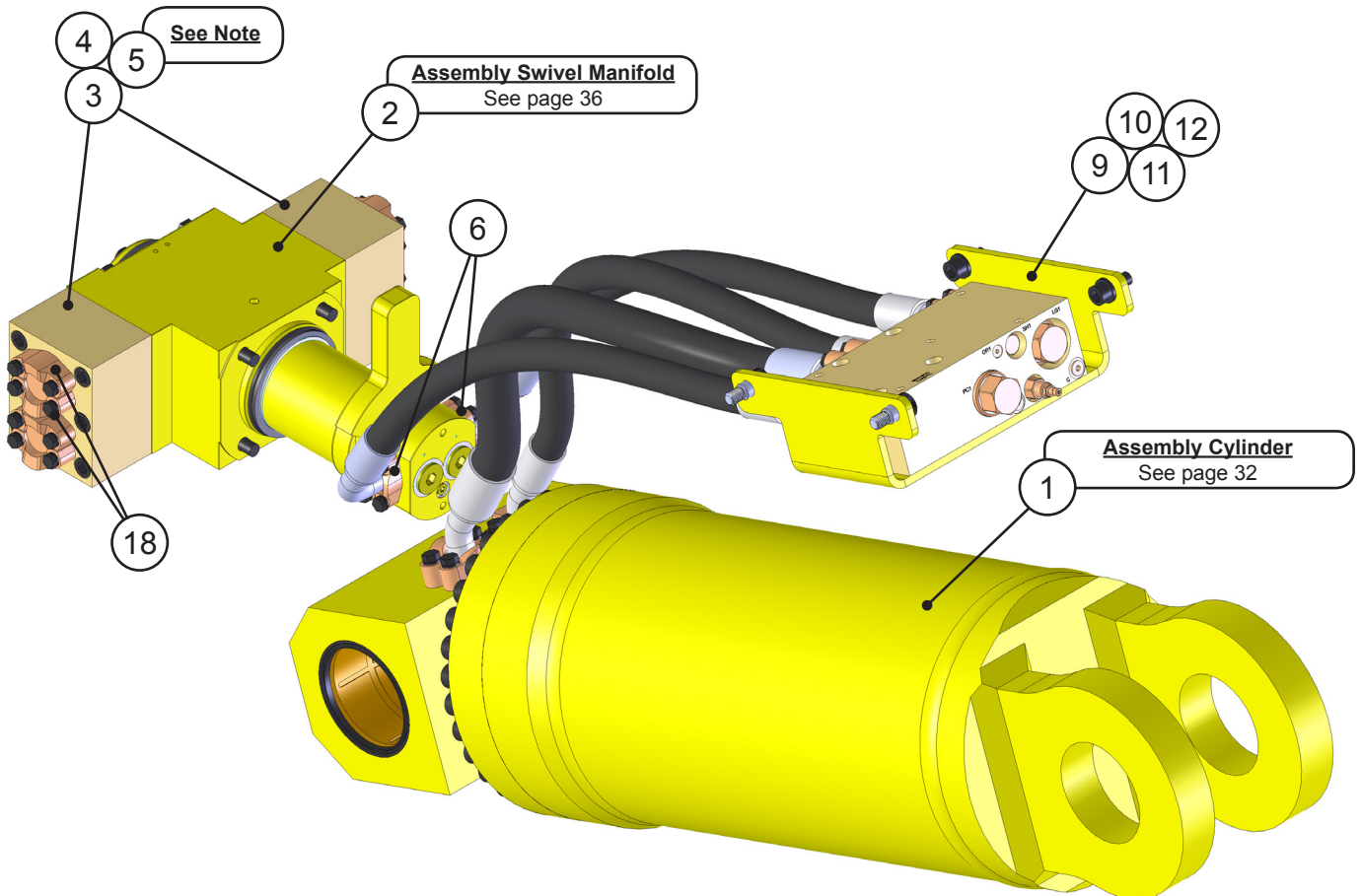
SUB-ASSEMBLY LINE MOUNT MANIFOLD



SUB-ASSEMBLY LINE MOUNT MANIFOLD

ITEM	QTY	PART NUMBER	DESCRIPTION
1	1	6300609	Valve Line Body
2	1	6300361	Valve Flow Control Seal Kit 6300634
3	1	6300497	Adaptor Bulkhead 08MB-08MO
4	1	6300523	Adaptor 08MB-08MB
5	1	6300364	Filter

ASSEMBLY OPEN AND CLOSE CIRCUIT



ASSEMBLY OPEN AND CLOSE CIRCUIT

ITEM	QTY	PART NUMBER	DESCRIPTION
1	1	See page 32	Assembly Cylinder B12.0 R8.0 S22.00
2	1	See page 36	Assembly Swivel Manifold
3	2	* Note Below	Mach Port Block
4	12	* Note Below	Socket Head Capscrew
5	4	* Note Below	O-Ring
6	6	1" Split Flange Kit - Code 61	
	2	H0261100	Split Flange Half 1.00 Code 61
	4	F0110035	Hex Head Capscrew M10 x 1.50 x 35
	4	F1401000	Lock Washer M10
	1	S0190219	O-Ring
7	1	See page 40	Valve Regen
8	4	F0612120	Socket Head Capscrew M12 x 1.75 x 120
9	1	1106892	Mach Plt Frmd Valve Tray
10	2	F0616035	Socket Head Capscrew M16 x 2 x 35
11	2	F1201630	Flat Washer M16
12	2	F3616020	Socket Head Shoulder Screw M16 x 2 x 20
13	2	1-1/4" Split Flange Kit - Code 62	
	2	H0262125	Split Flange Half 1.25 Code 62
	4	F0112050	Hex Head Capscrew M12 x 1.75 x 50
	4	F1401200	Lock Washer M12
	1	S0190222	O-Ring
14	1	1106562	Hose 20-6WR13-20FLH9062-20FLH62-36.00R
15	1	1106564	Hose 24-6WR13-24FLH3062-24FLH62-30.00
16	1	1106563	Hose 20-6WR13-20FLH3062-20FLH62-32.00
17	1	1106561	Hose 20-6WR13-20FLH9062-20FLH62-36.00L
18	4	1" Split Flange Kit - Code 62	
	2	H0262100	Split Flange Half 1.00 Code 62
	4	F0110050	Hex Head Capscrew M10 x 1.50 x 50
	4	F1401000	Lock Washer M10
	1	S0190219	O-Ring

* Items 3, 4 and 5 are Serial Number specific. For replacement parts call the Genesis Parts Department.

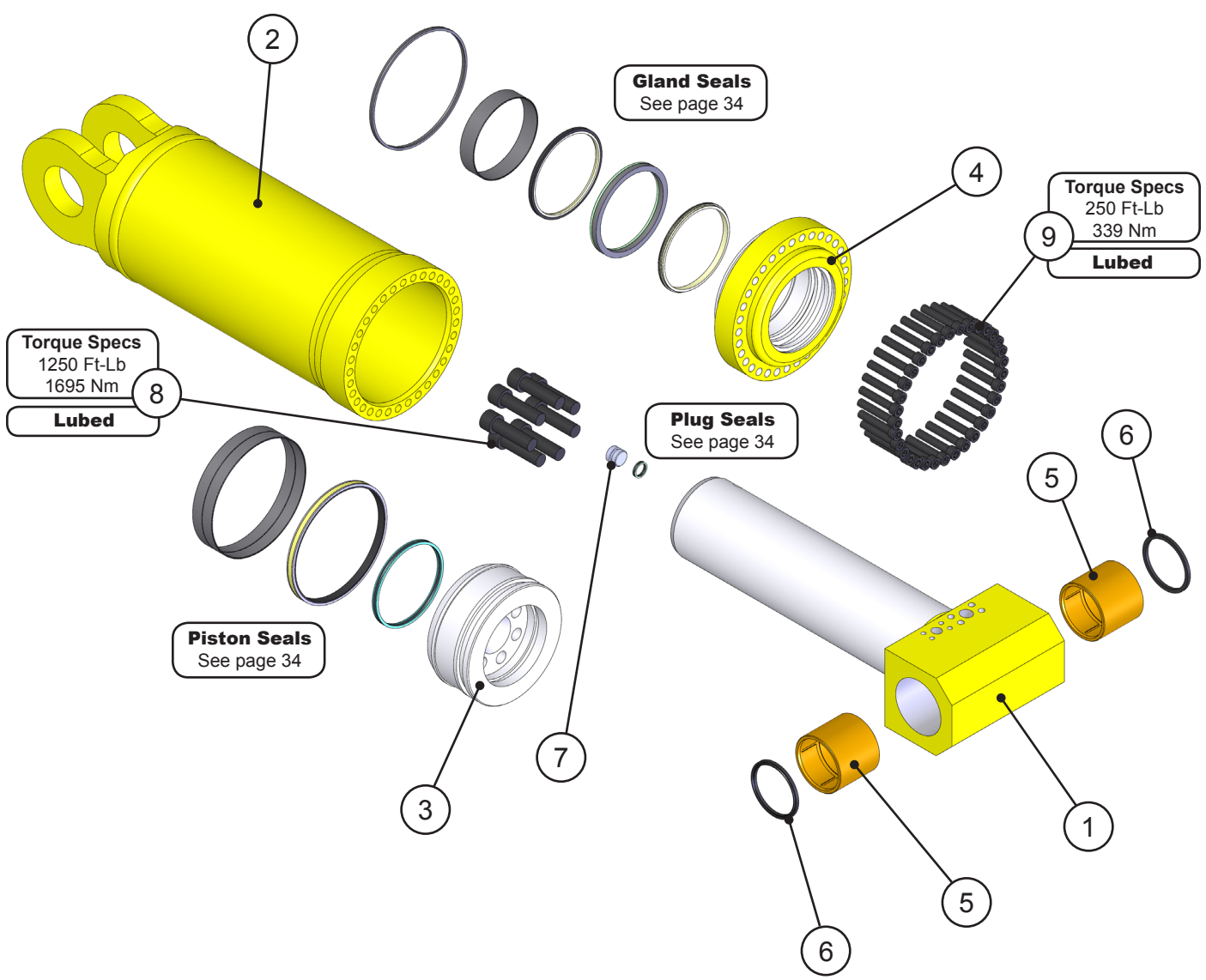
USA

715-395-5614
715-395-3405

Europe

+49 83 31 9 25 98 0

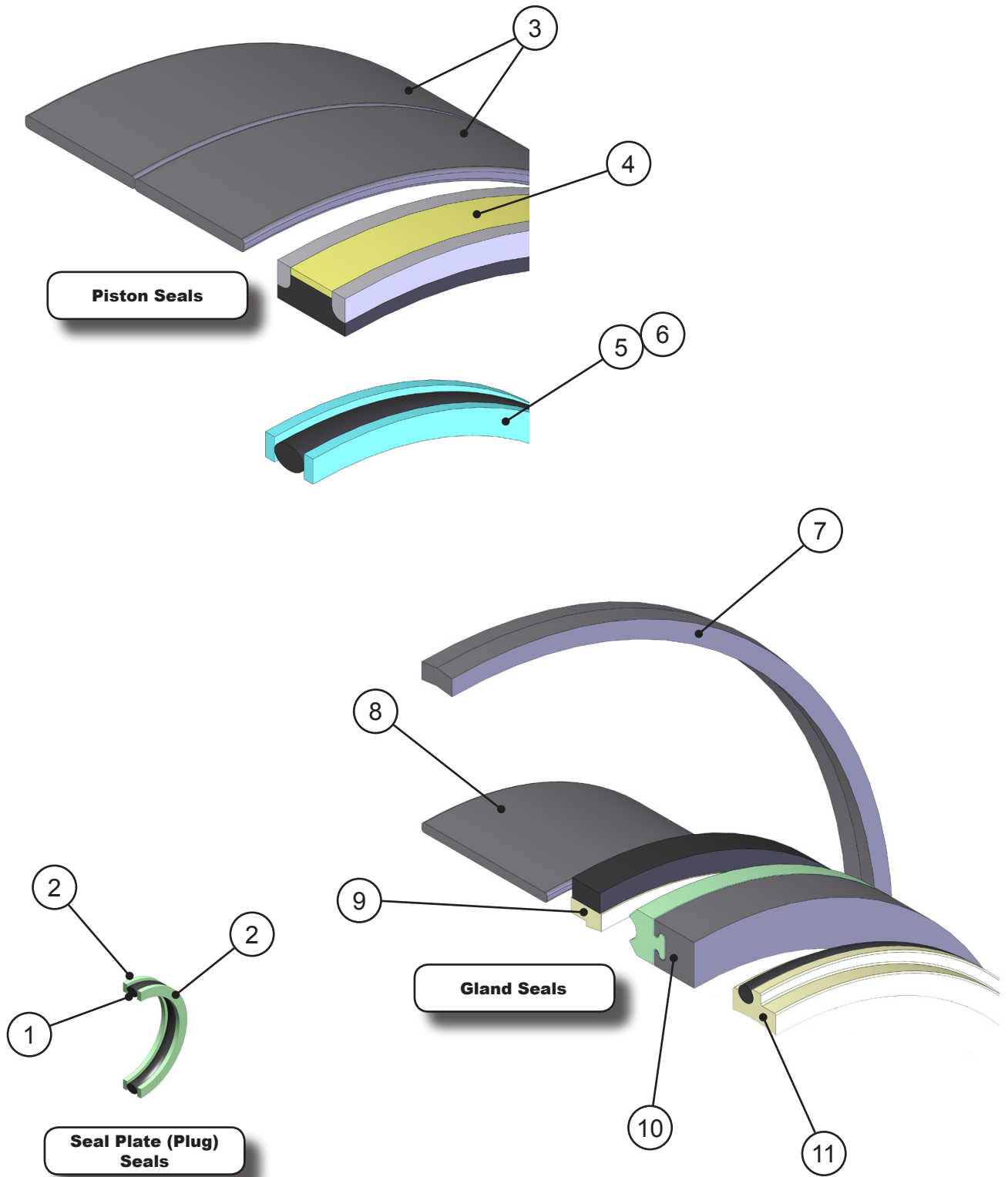
ASSEMBLY CYLINDER 6350084 - B12.0 R8.0 S22.00



ASSEMBLY CYLINDER 6350084 - B12.0 R8.0 S22.00

ITEM	QTY	PART NUMBER	DESCRIPTION
1	1	For replacement parts call the Genesis Parts Department. USA 715-395-5614 715-395-3405 Europe +49 83 31 9 25 98 0	Piston Rod Assembly
2	1		Butt and Tube Assembly
3	1		Piston
4	1		Gland
5	2		Bushing
6	2		Pin Seal
7	1		Seal Plate (Plug)
8	7		Socket Head Capscrew
9	25		Socket Head Capscrew

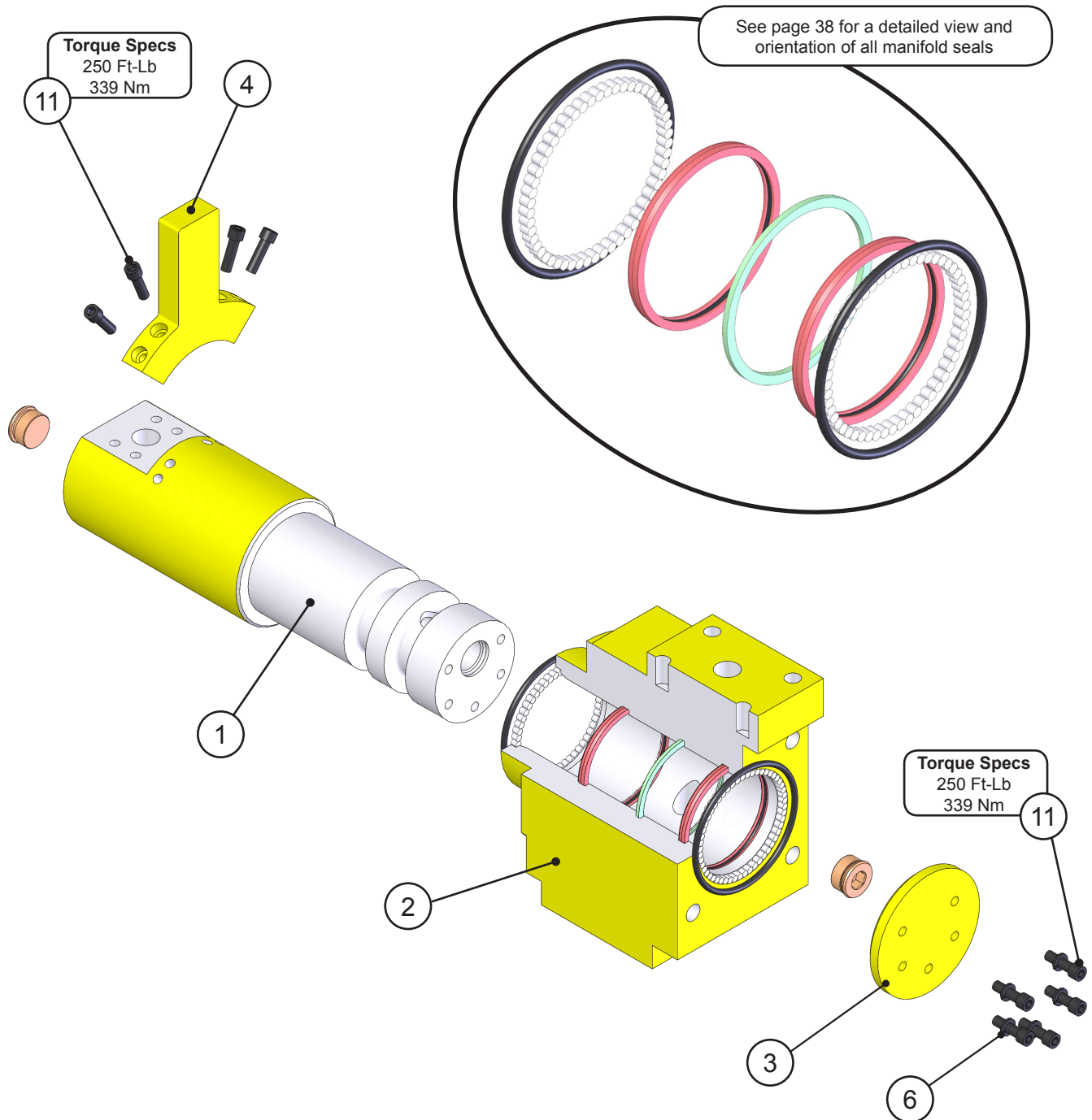
ASSEMBLY CYLINDER PACKING KIT - SK00120



ASSEMBLY CYLINDER PACKING KIT - SK00120

ITEM	QTY	PART NUMBER	DESCRIPTION
1	1	These Items ONLY Available in Packing Kit SK00120	O-Ring
2	2		Vented Back Up Washer
3	2		Piston Bearing Ring
4	1		Capped T Seal
5	1		O-Ring (90 Durometer)
6	2		Vented Back Up Washer
7	1		Kuver Seal
8	1		Gland Bearing Seal
9	1		Buffer Seal
10	1		Deep Z Seal w/ Delta Back Up
11	1		DX Wiper

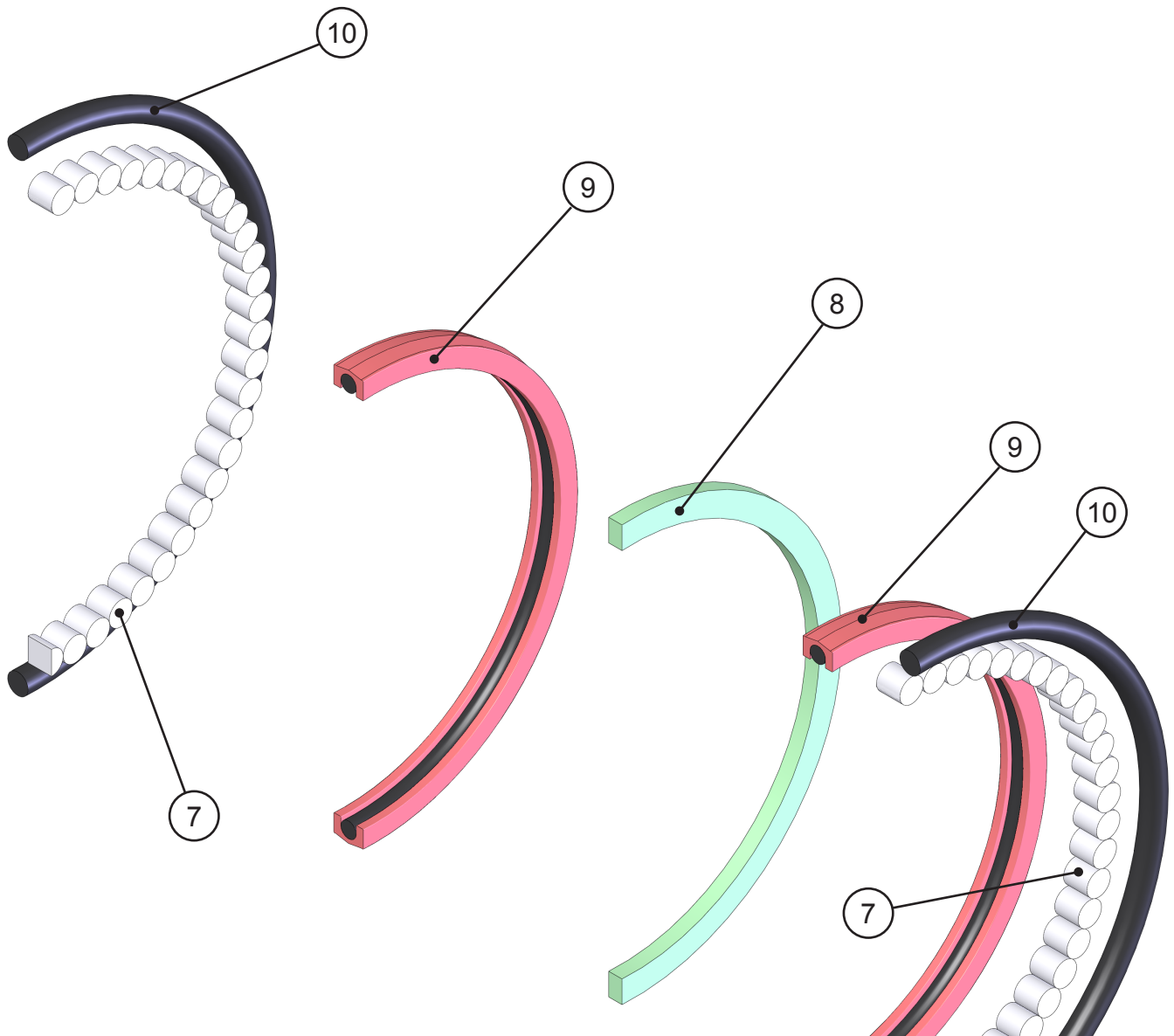
ASSEMBLY SWIVEL MANIFOLD - 6350097



ASSEMBLY SWIVEL MANIFOLD - 6350097

ITEM	QTY	PART NUMBER	DESCRIPTION
1	1	For replacement parts call the Genesis Parts Department. USA 715-395-5614 715-395-3405 Europe +49 83 31 9 25 98 0	Spool - 2 Port
2	1		Barrel - 2 Port
3	1		Keeper Plate
4	1		Torque Arm
5	2		16 SAE Plug
6	5		Lock Washer 3/8"
7	106		Roller Bearing
8	1		Seal
9	2		Crown Seal
10	2		O-Ring Seal
11	9		Socket Head Capscrew 3/8-16 x 1.25

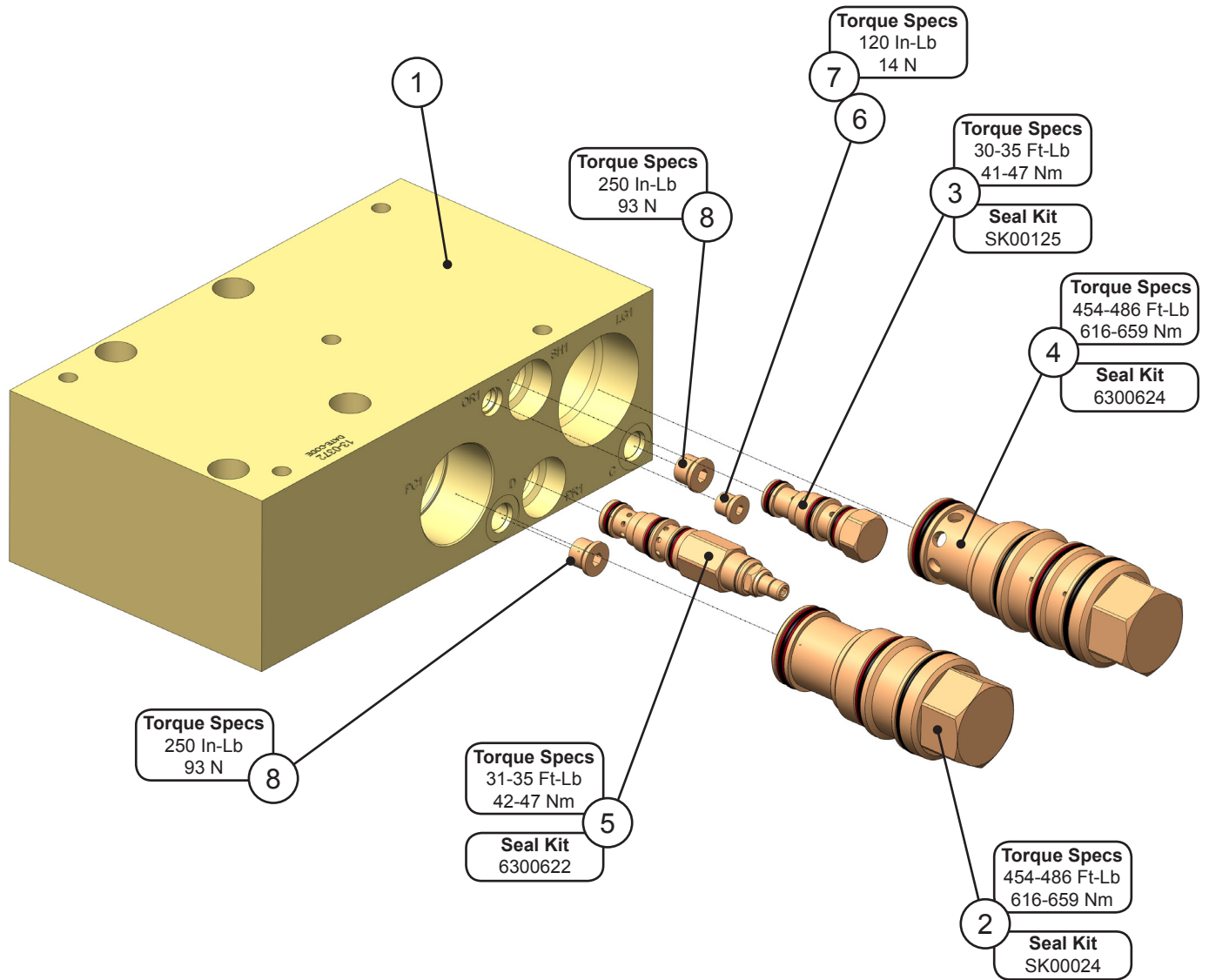
ASSEMBLY SWIVEL MANIFOLD PACKING KIT - SK00124



ASSEMBLY SWIVEL MANIFOLD PACKING KIT - SK00124

ITEM	QTY	PART NUMBER	DESCRIPTION
1	1	These Items ONLY available in Packing Kit SK00124	Seal
2	2		Crown Seal
3	2		O-Ring
4	106		Roller Bearing

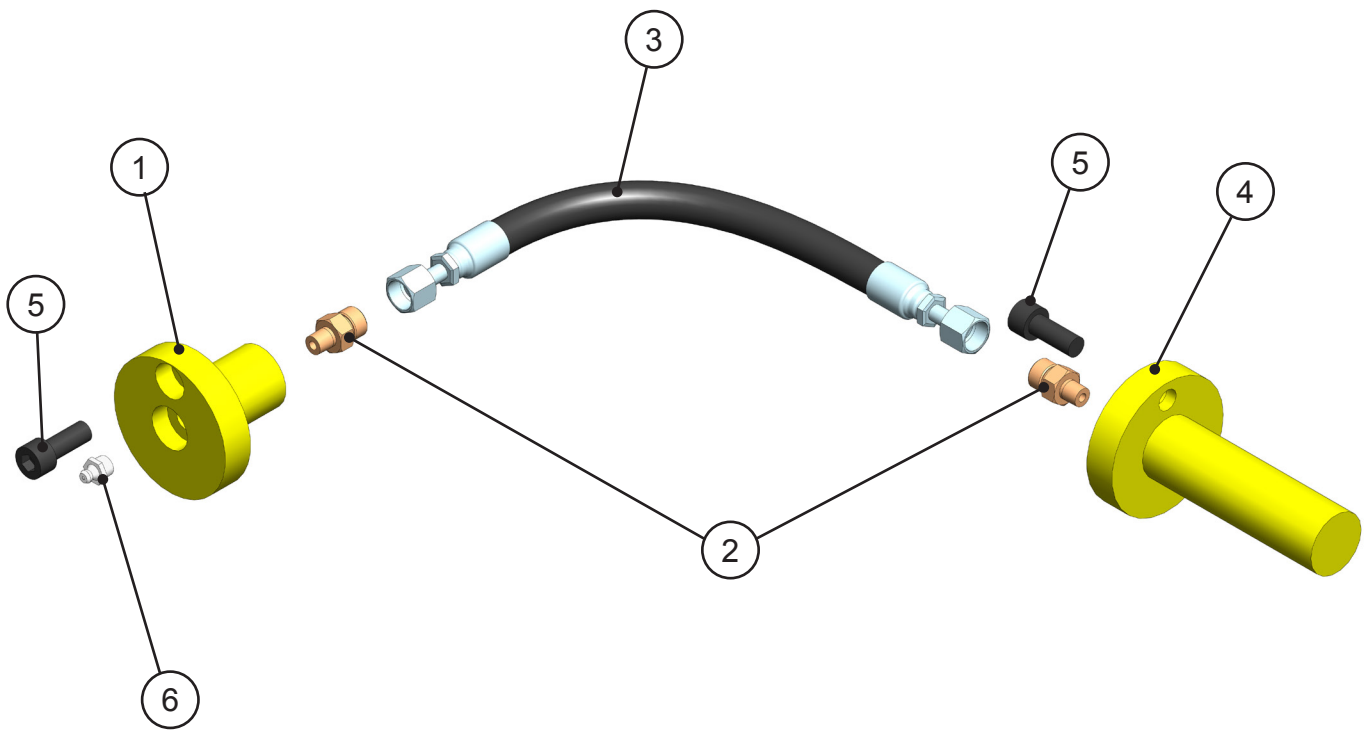
REGEN BLOCK SUB-ASSEMBLY



REGEN BLOCK SUB-ASSEMBLY

ITEM	QTY	PART NUMBER	DESCRIPTION
1	1	6360022	Manifold Block
2	2	6300061	Pilot to Close Check Valve Seal Kit SK00024
3	1	6301200	Valve Shuttle Seal Kit SK00125
4	1	6300623	Logic Element Seal Kit 6300624
5	1	6300625	Pressure Reducing Valve Seal Kit 6300622
6	1	6300903	Plug Pipe Orifice 01MP 1/16-27 NPT
7	1	6300076	Plug Socket Head 04MB
8	2	6300078	Plug Socket Head 06MB

ASSEMBLY SLEWING RING LUBRICATION



ASSEMBLY SLEWING RING LUBRICATION

ITEM	QTY	PART NUMBER	DESCRIPTION
1	1	5512411	Mach Grease Bulkhead Adaptor
2	2	6300731	Adaptor 02MP-04MO
3	1	1105888	Assy Hose 0° x 0° 4M2T
4	1	5512419	Mach Slewing Ring Grease Adaptor
5	2	F0610025	Socket Head Capscrew M10 x 1.50 x 25
6	1	6200002	Grease Fitting

WARRANTY

Claim Procedure

Notify the Genesis Service Department of the potential warranty claim prior to making the repair. Digital pictures are very helpful for diagnosing problems and recommending repairs.

Contact the Genesis Service Department before making alterations, changes or repairs to any component that is going to be considered for warranty. Not doing so will void all Genesis warranty consideration.

The Genesis Service Department will issue an authorization number to track the repair costs, outgoing parts, and/or defective parts returning to the factory.

Replacement parts must be ordered using a purchase order number. Shipping is standard ground. Overnight shipping is available by request, and Genesis will not cover the shipping charge.

When the repair is complete, submit an invoice to the Genesis Service Department within 30 days. Include itemized internal labor reporting, parts lists and invoices for outside contractors. Reference the authorization number on all invoices.

When returning parts for warranty consideration, include a copy of any related Genesis paperwork along with any other necessary documentation to ensure proper processing and credit. The Genesis Service Department will provide the necessary forms.

Your account will be credited when the warranty claim is accepted.

Blade Warranty

Standard warranty on blades will only be considered on the first edge, and wear on the edge must be 1/8" radius or less. Genesis does not warranty cutting blades that are cracked or broken from top to bottom (perpendicular to the long edge of the blade). Genesis also does not cover fasteners, the labor to replace wear components or collateral damage, such as blade seats, from broken blades, the piercing blade tang or adjustment plates.

Please direct any questions to the Genesis Service Department: 715-395-5252

PARTS ORDER POLICY AND PROCEDURE

Parts Orders Should Include

- Purchase order number
- Model and serial number of attachment
- Part number and quantity needed
- Shipping and billing address
- Method of shipment or required delivery date

Placing Orders

Orders may be placed by phone, e-mail or fax. To fax an order, use the form on the following page. Contact information is located at the front of this manual.

Part Numbers

Part numbers are listed in a separate Parts Manual or, if included, the Parts section of this manual. Contact the Genesis Parts Department with questions regarding part numbers, availability and pricing.

Shipping

All orders will be shipped best way surface unless an alternate shipping method is requested. Shipping charges are not included in the purchase price of parts.

Invoices

All invoices are due upon receipt. Any accounts with invoices open beyond 60 days are subject to review and may be placed on C.O.D. status without further notice.

Returns

Unused Genesis parts may be returned with proper documentation. Return shipping is the responsibility of the purchaser. Credit will be issued upon return, less a 20% restocking fee. Documentation is required for credit of returned parts. Contact the Genesis Parts Department at 715-395-5252 for a RGA (Return Goods Authorization) number and form.

Return Goods Authorization

All parts returned to Genesis for warranty consideration must be returned with a completed RGA (Return Goods Authorization) provided by the Genesis Parts Department. The form needs to be completed in its entirety, including any additional information requested by the Parts or Service Department. Return freight is the responsibility of the shipper and will be credited upon claim approval. A determination to accept or deny the claim will be made based on the information available to Genesis. Warranty on purchased parts other than wear components is 6 months. There is no warranty period on wear parts or components.

PARTS ORDER FORM

Customer: _____

Date: _____

Phone: _____

Contact: _____

Shipping Address: _____

Fax: _____

Billing Address: _____

Purchase Order: _____

Shipping Method: _____

Model: _____

Serial Number: _____

Quantity	Part Number	Description	Price

Fax to the Genesis Parts Department at 715-395-3411
 For assistance, call 715-395-5252 or e-mail genesisparts@genesisattachments.com

INDEX

- 1-1/4" Split Flange Kit - Code 62 31
- 1" Split Flange Kit - Code 61 31
- 1" Split Flange Kit - Code 62 31
- 16 SAE Plug 37
- 1101955 Mach Blade Razor 11
- 1103607 Mach Pin Keeper Rear 17
- 1103609 Mach Bolt Socket Head Capscrew 1.00-8 x 4.50 13
- 1104709 Mach Plt Valve Mount 25
- 1105397 Shim Set, Blade 11
- 1105854 Mach Flange Shoulder Bolt 19
- 1105868 Plt Rear Cover 19
- 1105883 Plt Bolt Cover 21
- 1105888 Assy Hose 0° x 0° 4M2T 43
- 1105939 Mach Blade Tip Right 13
- 1105940 Mach Blade Tip Left 13
- 1105941 Mach Blade Guide 11
- 1105992 Mach Auto Guide 15
- 1106413 Mach Guide Blade Adjust Plate 11
- 1106414 Mach Guide Blade Adjust Plate 11
- 1106477 Shim Set, Guide Blade 11
- 1106478 Shim Set, Auto Guide 15
- 1106542 Mach Tie Rod Nut 7, 9
- 1106561 Hose 20-6WR13-20FLH9062-20FLH62-36.00L 31
- 1106562 Hose 20-6WR13-20FLH9062-20FLH62-36.00R 31
- 1106563 Hose 20-6WR13-20FLH3062-20FLH62-32.00 31
- 1106564 Hose 24-6WR13-24FLH3062-24FLH62-30.00 31
- 1106835 Wtmg Stick 5
- 1106871 Wtmg Upper 5
- 1106874 Mach Bearing RH 7
- 1106875 Mach Bearing LH 9
- 1106876 Mach Blade 11, 13
- 1106877 Mach Adjust Plate 11
- 1106879 Mach Adjust Plate 11
- 1106880 Mach Main Shaft 9
- 1106882 Shim Set Thrust Washer 7, 9
- 1106883 Mach End Cap 7, 9
- 1106885 Mach Tie Rod 7
- 1106886 Mach Thrust Washer 7, 9
- 1106888 Wldt Front Cyl Pin 17
- 1106889 Mach Rear Cyl Pin 17
- 1106892 Mach Plt Frmd Valve Tray 31
- 1106894 Wldt Cover 19
- 1106928 Hose 08-2WR16-08FFORX-08FFORX45M-20.50* 25
- 1106929 Hose 08-2WR16-08FFORX-08FFORX90M-20.50* 25
- 3100133 Mach Bearing Upper Cylinder Connection 17
- 3100324 Pinion 23
- 3100450 Mach Spacer 23
- 3500350 Mach Pin Keeper (Clevis) 17
- 5500752 Plt Strap 21
- 5512411 Mach Grease Bulkhead Adaptor 43
- 5512419 Mach Slewing Ring Grease Adaptor 43
- 5513377 Wtmg Sub Head 21
- 5513499 Wtmg Sub Head Cover 21
- 6100092 Bearing Slewing 23
- 6200002 Grease Fitting 7, 9, 15, 17, 21, 43
- 6300021 Plug Socket Head 06MB 27
- 6300052 Adaptor 12MB-08MO 25
- 6300061 Pilot to Close Check Valve 41
- 6300076 Plug Socket Head 04MB 41
- 6300078 Plug Socket Head 06MB 41
- 6300088 Diagnostic Nipple 04MP 27
- 6300159 Motor 23
- 6300305 Adaptor 10MB-08MFFOR-90 25
- 6300361 Valve Flow Control 29
- 6300364 Filter 29
- 6300497 Adaptor Bulkhead 08MB-08MO 29
- 6300501 Valve Relief 27
- 6300523 Adaptor 08MB-08MB 29
- 6300609 Valve Line Body 29
- 6300623 Logic Element 41
- 6300625 Pressure Reducing Valve 41
- 6300731 Adaptor 02MP-04MO 43
- 6300903 Plug Pipe Orifice 01MP 1/16-27 NPT 41
- 6301112 O-Ring 19
- 6301200 Valve Shuttle 41
- 6310001 Diagnostic Nipple Dust Cap 27
- 6360022 Manifold Block 41
- 6380035 Valve Counterbalance 27
- 6380079 Valve Block 27
- Assembly Access Covers 5, 18, 19
- Assembly Auto Guide 5, 14, 15
- Assembly Cylinder 5
- Assembly Cylinder 6350084 - B12.0 R8.0 S22.00 32, 33
- Assembly Cylinder B12.0 R8.0 S22.00 31
- Assembly Cylinder Packing Kit 5
- Assembly Cylinder Packing Kit - SK00120 34, 35
- Assembly Cylinder Pins 5, 16, 17
- Assembly Lower Blades 5, 10, 11
- Assembly Open and Close Circuit 5, 30, 31
- Assembly Pivot Group - Left Side 5, 8, 9
- Assembly Pivot Group - Right Side 5, 6, 7
- Assembly Rotation 5, 22, 23
- Assembly Rotation Circuit 5, 24, 25
- Assembly Slewing Ring Lubrication 5, 42, 43
- Assembly Swivel Manifold 5, 31
- Assembly Swivel Manifold - 6350097 36, 37
- Assembly Swivel Manifold Packing Kit - SK00124 38, 39
- Assembly Swivel Manifold Seal Kit 5
- Assembly Upper Blades 5, 12, 13
- Assembly Upper Head 5, 20, 21
- Barrel - 2 Port 37

INDEX

- Buffer Seal 35
- Bushing 33
- Butt and Tube Assembly 33
- Capped T Seal 35
- Contact Information 2, 49
- Crown Seal 37, 39
- Deep Z Seal w/ Delta Back Up 35
- DX Wiper 35
- F090880 Hex Nut .88-9 11
- F0110030 Hex Head Capscrew M10 x 1.50 x 30 21
- F0110035 Hex Head Capscrew M10 x 1.50 x 35 31
- F0110050 Hex Head Capscrew M10 x 1.50 x 50 31
- F0112020 Hex Head Capscrew M12 x 1.75 x 20 19
- F0112030 Hex Head Capscrew M12 x 1.75 x 30 21
- F0112050 Hex Head Capscrew M12 x 1.75 x 50 31
- F0112100 Hex Head Capscrew M12 x 1.75 x 100 25
- F0120100 Hex Head Capscrew M20 x 2.5 x 100 23
- F0210400 Hex Head Capscrew 1.00-8 x 4.00 15
- F0288200 Hex Head Capscrew .88-9 x 2.00 11
- F0288350 Hex Head Capscrew .88-9 x 3.50 11
- F0288450 Hex Head Capscrew .88-9 x 4.50 11
- F0412030 Flat Head Capscrew M12 x 1.75 x 30 7, 9
- F0588450 Flat Head Capscrew .88-9 x 4.50 11
- F0588500 Flat Head Capscrew .88-9 x 5.00 13
- F0588600 Flat Head Capscrew .88-9 x 6.00 13
- F0610025 Socket Head Capscrew M10 x 1.50 x 25 7, 9, 43
- F0612040 Socket Head Capscrew M12 x 1.75 x 40 7, 9
- F0612070 Socket Head Capscrew M12 x 1.75 x 70 23
- F0612120 Socket Head Capscrew M12 x 1.75 x 120 31
- F0616035 Socket Head Capscrew M16 x 2 x 35 31
- F0616070 Socket Head Capscrew M16 x 2 x 70 7, 9
- F0620100 Socket Head Capscrew M20 x 2.50 x 100 17
- F0620180 Socket Head Capscrew M20 x 2.50 x 180 17
- F0908809 Hex Nut .88-9 13
- F1020250 Nylock Hex Nut M12 x 2.50 17
- F1201021 Flat Washer M10 7, 9, 21
- F1201224 Flat Washer M12 7, 9, 19, 21, 25
- F1201630 Flat Washer M16 7, 9, 31
- F1300088 Flat Washer Narrow .88 11, 13
- F1300100 Flat Washer Narrow 1.00 15
- F1401000 Lock Washer M10 31
- F1401200 Lock Washer M12 31
- F2588088 Set Screw Socket Head .88-9 x .88 11
- F3616020 Socket Head Shoulder Screw M16 x 2 x 20 31
- General Arrangement 4, 5
- Gland 33
- Gland Bearing Seal 35
- Gland Seals 32, 34
- H0261100 Split Flange Half 1.00 Code 61 31
- H0262100 Split Flange Half 1.00 Code 62 31
- H0262125 Split Flange Half 1.25 Code 62 31
- Keeper Plate 37
- Kuver Seal 35
- Lock Washer 3/8" 37
- Mach Bearing 21
- Mach Boom Bearing 21
- Mach Port Block 31
- Mach Spacer Sleeve 21
- Motor Installation 25
- O-Ring 31, 35, 39
- O-Ring (90 Durometer) 35
- O-Ring Seal 37
- Parts Order Form 46
- Parts Order Policy and Procedure 45
- Pin Seal 33
- Piston 33
- Piston Bearing Ring 35
- Piston Rod Assembly 33
- Piston Seals 32, 34
- Plug Seals 32
- Regen Block Sub-Assembly 40, 41
- Roller Bearing 37, 39
- S0190219 O-Ring 31
- S0190222 O-Ring 31
- S0190238 O-Ring 7, 9
- Seal 37, 39
- Seal Kit 6300622 40, 41
- Seal Kit 6300624 40, 41
- Seal Kit 6300633 26, 27
- Seal Kit 6300634 28, 29
- Seal Kit SK00024 40, 41
- Seal Kit SK00058 26, 27
- Seal Kit SK00125 40, 41
- Seal Plate (Plug) 33
- Seal Plate (Plug) Seals 34
- Shim Set 15
- SK00120 35
- SK00124 39
- Socket Head Capscrew 31, 33
- Socket Head Capscrew 3/8-16 x 1.25 37
- Spool - 2 Port 37
- Sub-Assembly Line Mount Manifold 5, 25, 28, 29
- Sub-Assembly Regen Block 5
- Sub-Assembly Rotate Cross-over / C'bal 5, 25, 26, 27
- Table of Contents 3
- Torque Arm 37
- Vented Back Up Washer 35
- Warranty 44
- Wldt Pin 21
- Wtmg Lug Upper Head 5, 21



GENESIS®

The Promise of Performance.

CONTACT INFORMATION

World Headquarters Genesis Attachments

1000 Genesis Drive
Superior, WI 54880 USA

Toll Free: 888-SHEAR-IT
(888-743-2748)

Phone: 715.395.5252
Fax: 715.395.5255

E-mail:
info@genesisattachments.com

Europe/Africa/Middle East Genesis GmbH

Teramostrasse 23
87700 Memmingen, Germany

Phone: +49 83 31 9 25 98 0
Fax: +49 83 31 9 25 98 80
genesis-europe.com

E-mail:
info@genesis-europe.com

Asia Pacific Representative Office

24 Upper Serangoon View #12-28
Singapore 534205

Phone: +65 9673 9730

E-mail:
tchoo@genesisattachments.com

Central & South America, The Caribbean

Cra 13A #89-38 / Ofi 613
Bogota, Colombia

Phone: +57 1 610 8160 / 795 8747

E-mail:
contact@themsagroup.com

Brazil

Avenida Araça, 1677
Campinas - São Paulo

Phone: +55 19 9 9989-8803

E-mail:
gel@themsagroup.com

View and download all manuals at genesisattachments.com/manuals.asp
Patents: genesisattachments.com/patents