

# Bucket Crusher (GBC)



## FEATURES

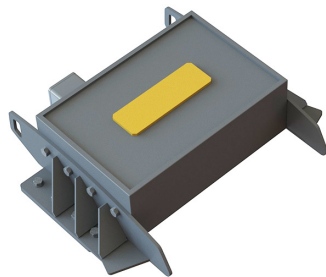
- Aggressive figure-eight movement for cubical shaped product and high performance
- Built for durability with a large and robust casted jaw stock and Hardox frame
- Extra-large jaw plates provide optimal performance and longer life
- Replaceable cheek plates and toggle seat and centralized lubrication system for easy maintenance

## APPLICATIONS

- Demolition
- Recycling
- Concrete & Rock Processing
- Roadwork & Leveling
- Excavation & Construction
- Sewer & Pipeline Construction

**IMPACT  
TOOLS  
GROUP**

## Optional Accessories Enhance Performance and Safety



Magnet with Copper Coil



Crush Control Camera System

Model	Load Volume (y <sup>3</sup> )	Weight* (lbs.)	Length (ins.)	Width (ins.)	Height (ins.)	Intake Opening (ins.)	Min. - Max. Jaw Opening (ins.)	Oil Flow Rate (gpm)	Oil Pressure (psi)	Recommended Excavator Weight (lbs.)
<b>GBC 650</b>	0.67	3,750	76	43	51	26 x 20	1 - 4	>27	3,190	25,000
<b>GBC 750</b>	1	6,180	87	48	54	30 x 20	1 - 4	>39	3,190	50,000
<b>GBC 950</b>	1.25	8,720	93	57	55	37 x 21	1 - 4.75	>53	3,190	75,000
<b>GBC 1250</b>	2	12,610	101	72	61	49 x 22	1 - 4.75	>77	3,190	100,000

\* Weight without lugs

The GBC is covered by a 12-month, 1,500-hour (whichever occurs first) warranty.

Genesis reserves the right to continually make product improvements designed to positively enhance performance.

Patents: [genesisattachments.com/products/patents](http://genesisattachments.com/products/patents)