

Bucket Crusher (GBC)



FEATURES

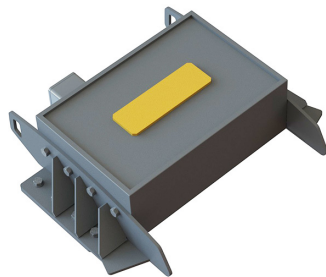
- Aggressive figure-eight movement for cubical shaped product and high performance
- Built for durability with a large and robust casted jaw stock and Hardox frame
- Extra-large jaw plates provide optimal performance and longer life
- Replaceable cheek plates and toggle seat and centralized lubrication system for easy maintenance

APPLICATIONS

- Demolition
- Recycling
- Concrete & Rock Processing
- Roadwork & Leveling
- Excavation & Construction
- Sewer & Pipeline Construction

**IMPACT
TOOLS
GROUP**

Optional Accessories Enhance Performance and Safety



Magnet with Copper Coil



Crush Control Camera System

Model	Load Volume (y ³)	Weight* (lbs.)	Length (ins.)	Width (ins.)	Height (ins.)	Intake Opening (ins.)	Min. - Max. Jaw Opening (ins.)	Oil Flow Rate (gpm)	Oil Pressure (psi)	Recommended Excavator Weight (lbs.)
GBC 650	0.67	3,750	76	43	51	26 x 20	1 - 4	>27	3,190	25,000
GBC 750	1	6,180	87	48	54	30 x 20	1 - 4	>39	3,190	50,000
GBC 950	1.25	8,720	93	57	55	37 x 21	1 - 4.75	>53	3,190	75,000
GBC 1250	2	12,610	101	72	61	49 x 22	1 - 4.75	>77	3,190	100,000

* Weight without lugs

Genesis reserves the right to continually make product improvements designed to positively enhance performance.
Patents: genesisattachments.com/products/patents



1000 Genesis Drive, Superior, WI 54880
888-SHEAR-IT (743-2748) – Tel: 715.395.5252 – genesisattachments.com