

# Bucket Crusher (GBC)



## FEATURES

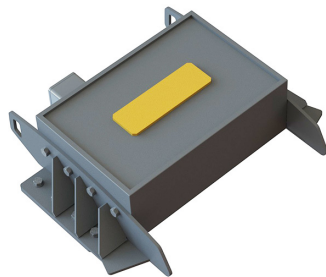
- Aggressive figure-eight movement for cubical shaped product and high performance
- Built for durability with a large and robust casted jaw stock and Hardox frame
- Extra-large jaw plates provide optimal performance and longer life
- Replaceable cheek plates and toggle seat and centralized lubrication system for easy maintenance

## APPLICATIONS

- Demolition
- Recycling
- Concrete & Rock Processing
- Roadwork & Leveling
- Excavation & Construction
- Sewer & Pipeline Construction

**IMPACT  
TOOLS  
GROUP**

## Optional Accessories Enhance Performance and Safety



Magnet with Copper Coil



Crush Control Camera System

## Metric Specs:

| Model           | Load Volume<br>(m <sup>3</sup> ) | Weight*<br>(kg) | Length<br>(mm) | Width<br>(mm) | Height<br>(mm) | Intake Opening<br>(mm) | Min. - Max. Jaw Opening<br>(mm) | Oil Flow Rate<br>(lpm) | Oil Pressure<br>(bar) | Recommended Excavator Weight<br>(mt) |
|-----------------|----------------------------------|-----------------|----------------|---------------|----------------|------------------------|---------------------------------|------------------------|-----------------------|--------------------------------------|
| <b>GBC 650</b>  | 0.5                              | 1,701           | 1,930          | 1,092         | 1,295          | 660 x 508              | 25 - 102                        | >102                   | 220                   | 11                                   |
| <b>GBC 750</b>  | 0.75                             | 2,803           | 2,210          | 1,219         | 1,372          | 762 x 508              | 25 - 102                        | >148                   | 220                   | 23                                   |
| <b>GBC 950</b>  | 1                                | 3,955           | 2,362          | 1,448         | 1,397          | 940 x 533              | 25 - 121                        | >201                   | 220                   | 34                                   |
| <b>GBC 1250</b> | 1.5                              | 5,720           | 2,565          | 1,829         | 1,549          | 1,245 x 559            | 25 - 121                        | >291                   | 220                   | 45                                   |

\* Weight without lugs

The GBC is covered by a 12-month, 1,500-hour (whichever occurs first) warranty.

Genesis reserves the right to continually make product improvements designed to positively enhance performance.

Patents: [genesisattachments.com/products/patents](http://genesisattachments.com/products/patents)