

Bucket Crusher (GBC)



FEATURES

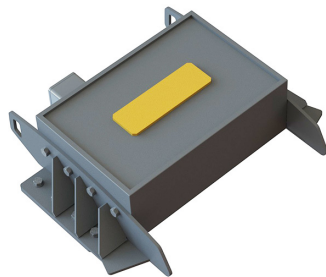
- Aggressive figure-eight movement for cubical shaped product and high performance
- Built for durability with a large and robust casted jaw stock and Hardox frame
- Extra-large jaw plates provide optimal performance and longer life
- Replaceable cheek plates and toggle seat and centralized lubrication system for easy maintenance

APPLICATIONS

- Demolition
- Recycling
- Concrete & Rock Processing
- Roadwork & Leveling
- Excavation & Construction
- Sewer & Pipeline Construction

**IMPACT
TOOLS
GROUP**

Optional Accessories Enhance Performance and Safety



Magnet with Copper Coil



Crush Control Camera System

Metric Specs:

Model	Load Volume (m ³)	Weight* (kg)	Length (mm)	Width (mm)	Height (mm)	Intake Opening (mm)	Min. - Max. Jaw Opening (mm)	Oil Flow Rate (lpm)	Oil Pressure (bar)	Recommended Excavator Weight (mt)
GBC 650	0.5	1,701	1,930	1,092	1,295	660 x 508	25 - 102	>102	220	11
GBC 750	0.75	2,803	2,210	1,219	1,372	762 x 508	25 - 102	>148	220	23
GBC 950	1	3,955	2,362	1,448	1,397	940 x 533	25 - 121	>201	220	34
GBC 1250	1.5	5,720	2,565	1,829	1,549	1,245 x 559	25 - 121	>291	220	45

* Weight without lugs

Genesis reserves the right to continually make product improvements designed to positively enhance performance.
Patents: genesisattachments.com/products/patents



1000 Genesis Drive, Superior, WI 54880
888-SHEAR-IT (743-2748) – Tel: 715.395.5252 – genesisattachments.com