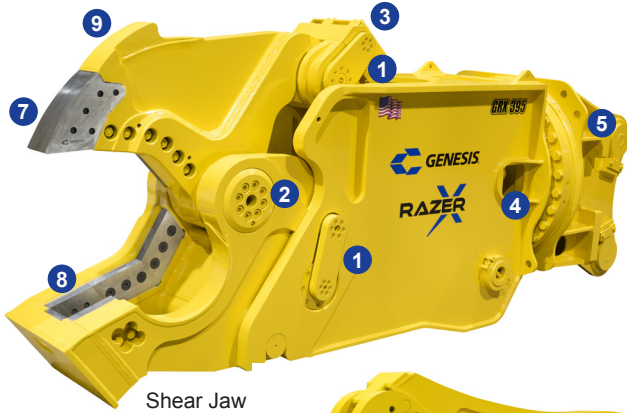


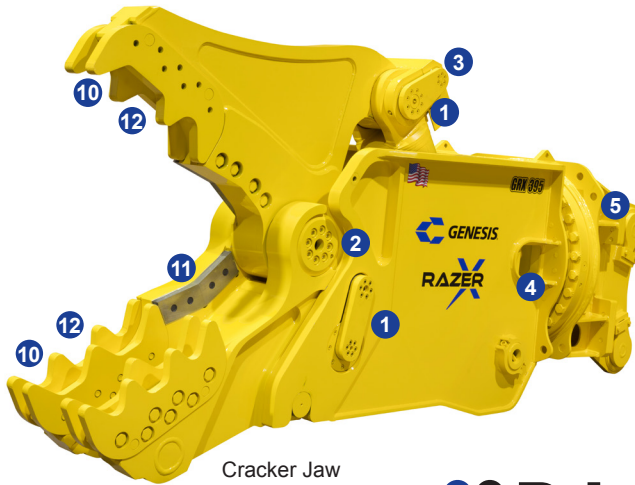
## Multi-Jaw Demolition Tool (GRX)

### FEATURES

- 1 Hydraulic pin engagement and removal for jaw change-outs in less than 2 minutes without leaving the cab
  - 2 Heavy-duty pivot design is integral to the jaw set, providing a power curve to match the jaw's primary application
  - 3 Reverse-mounted cylinder protects the rod from debris
  - 4 Proprietary regeneration valve improves cycle time by up to 33% compared to standard hydraulic systems
  - 5 Short, flat-top head with bolt-on bracket shortens the center of gravity, making it easy to change mounting for different carriers
  - 6 Jaw stands are specific to each jaw set, providing correct positioning for efficient change-outs
- Shear Jaw**
- 7 Bolt-on piercing tip encapsulates front of upper jaw, minimizing risk of damage and reducing maintenance
  - 8 Dual guide blade length matches piercing tip length so blades can be shimmed independently to accommodate piercing tip wear
  - 9 Weld-on, replaceable, highly abrasion-resistant steel rhino horn protects front of upper jaw, reducing maintenance
- Cracker Jaw**
- 10 Low-cost, reversible, long-life crushing teeth are quickly and easily replaced, eliminating build-up
  - 11 4-way indexable cutting blades feature an apex that draws material deeper into the jaw for more efficient cutting
  - 12 Easy-to-change crushing teeth are available in several configurations to maximize performance in any application



Shear Jaw



Cracker Jaw

### APPLICATIONS

- Concrete Recycling
- C & D Processing
- Bridge Demolition
- Wire
- Copper
- Structural Steel
- Demolition
- Rebar
- Aluminum



Shear Jaw Stand

### Metric Specs

Model	Jaw	Weight*	Jaw Opening	Jaw Depth	Reach**	Minimum Excavator Weight
		(kg)	(mm)	(mm)	(mm)	Stick Mount (mt)
GRX 395	Cracker	4,876	1,143	1,067	3,200	41
GRX 395	Shear	4,763	610	648	3,200	41

\*Weight includes mounting bracket to attach to excavator.

\*\*Distance is measured from the attachment mounting pivot (boom or stick) forward.

All Genesis GRX Razer tools are covered by a 12-month, 1,500-hour (whichever occurs first) warranty.

Genesis reserves the right to continually make product improvements designed to positively enhance performance.

Patents: [genesisattachments.com/products/patents](http://genesisattachments.com/products/patents)