

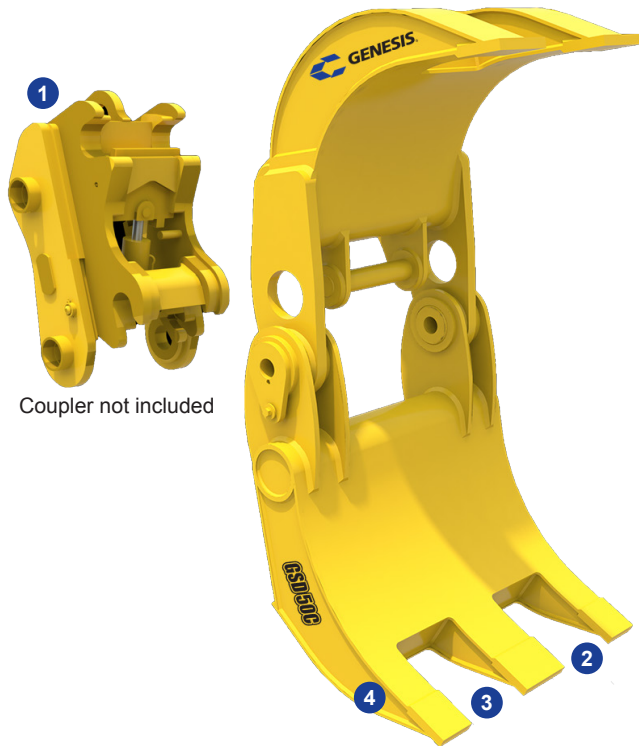
Severe-Duty Grapple C Series (GSD C)

FEATURES

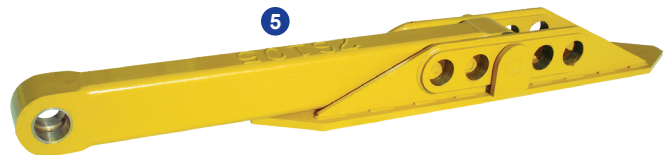
- 1 The C Series is specifically designed to provide optimal performance with a quick coupler
- 2 Replaceable tine tips are abrasion-resistant Hardox steel
- 3 Boxed-tine construction creates a very high strength and lightweight grapple – each tine will withstand the full breakout force of the excavator
- 4 Recessed welds are protected from wear, increasing grapple life
- 5 Stiff arm and mounting pad included

APPLICATIONS

- Demolition
- Scrap Handling & Compaction
- Rip-Rap Handling
- Road Building & Reconstruction
- C&D Sorting
- Land Clearing



Coupler not included



Metric Specs:

Model	Weight*	Capacity	Jaw Opening**	Jaw Closed	Moveable Jaw Width	Lower Jaw Width	Excavator Weight
	(kg)	(m ³)	(mm)	(mm)	(mm)	(mm)	(mt)
GSD 30C	1,043	1.1 - 1.9	1,981	203	660	1,041	11 - 14
GSD 40C	1,270	1.5 - 2.3	2,235	229	762	1,143	14 - 18
GSD 50C	1,678	2.3 - 3.1	2,438	254	864	1,270	16 - 29
GSD 70C	2,223	2.7 - 3.4	2,997	305	914	1,321	29 - 39
GSD 90C	2,948	3.4 - 5.0	3,302	356	1,016	1,473	39 - 54

*Weight includes mounting bracket and stiff arm.

**Jaw opening varies slightly depending on excavator mounting location.

Genesis GSD C Grapples are covered by a 12-month, 1,500-hour (whichever occurs first) warranty.

Genesis reserves the right to continually make product improvements designed to positively enhance performance.

Patents: genesisattachments.com/products/patents