



TIM'S TECH TIPS



Efficient and Productive Operation

When you're making service calls and customer visits, it's always a good idea to spend a couple minutes discussing attachment operating tips that not only help operators work in the most proficient manner but also reduce maintenance.

Tip #1

When cutting, build up and cut out of small piles, keeping the surfaces of the shear chin plate and upper jaw out of the dirt as much as possible. Dirt is much more abrasive than steel and needlessly increases build-up and hard-surfacing time and intervals.



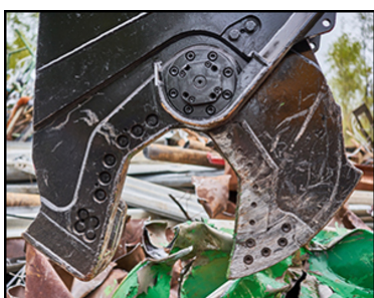
Tip #2

Before cutting, operators should assess the materials to be processed and visualize a starting and finishing point to use the fewest cuts possible.

Material should be picked from a pile, swung to the side and cut in a new area to prevent redundant cutting of the same pieces and allow for the newly prepared material to be loaded out with another material handler.

Tip #3

Material processing areas should be as close as safely possible to the transportation loading location. Excessive moving, positioning and loading cost time and money, while proper staging and processing increase productivity and reduce operational costs and equipment wear.



Tip #4

Fully opening the jaws when only partial opening is needed for a cut wastes time and fuel, slows other excavator functions as well as causes needless wear to hydraulic components, hoses and O-rings. Processing more efficiently will extend attachment life.

Have an attachment operating technique question? Contact Tim at 218-349-5755, talseth@genesisattachments.com or reference the [Safety and Operator's Manual](#) for your specific attachment.