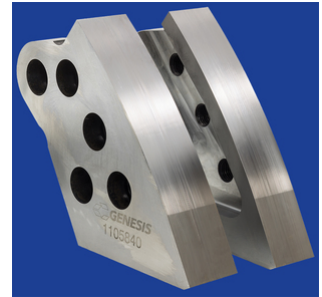


GXT Piercing Tip Installation

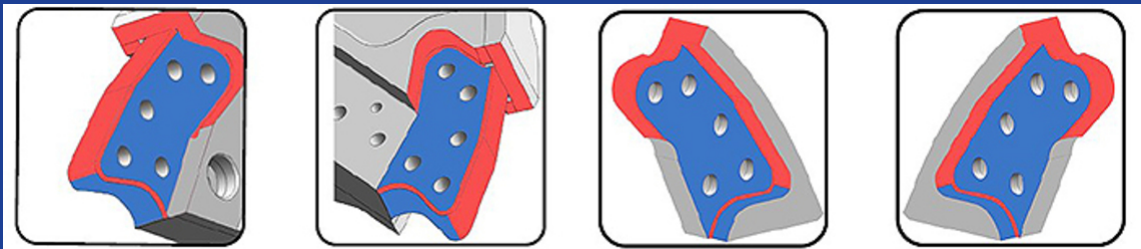
No one likes when blade gaps cause material to jam or blades to break. So when processing steel and demo'ing buildings eventually take their toll, badly worn piercing blades must be replaced.

Here's a quick reminder about an important part of the process, and one we get a lot of calls on, that can lead to damage if not done properly.



When installing piercing tips, make sure there is a gap between the top of the tips and the seat. If there isn't a gap, check if protection strip material has fallen down into the seat during the jaw open/retract cycle.

Tips hitting at the top of the seat in the red areas shown below will cause cracking in the face of the tip between the bolt holes. Most often, it will be the tip with the threaded bolt holes that will crack due to bolt hole misalignment.



And remember, torque tip bolts every day, preferably at the start of the shift when blades are at ambient temperature.

All of the steps for installing GXT piercing tips can be found in the [GXT Piercing Tip Installation Maintenance Minute](#) and the [GXT Safety and Operator's Manual](#).

As always, if you have questions, contact Tim at 218-349-5755, talseth@genesisattachments.com