



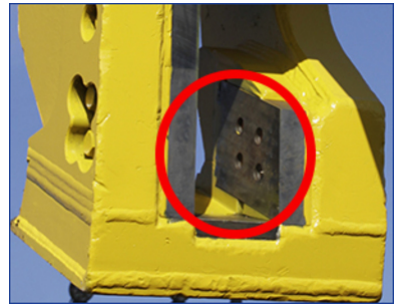
TIM'S TECH TIPS



Guide Blade Maintenance

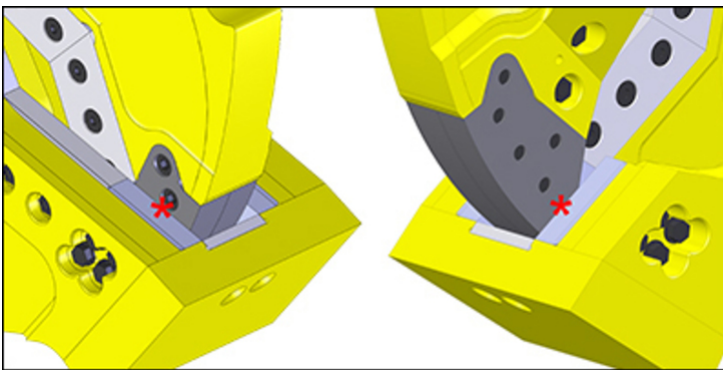
Guide blades are just as critical for effective processing as the cutting blades and piercing tip and like the other blades, must be properly maintained.

Guide blade tolerances should be checked after adjusting the AutoGuide and kept within the specifications listed in the safety and operator's manual for the specific attachment. If the blade gaps are not within spec, the blades must be shimmed.

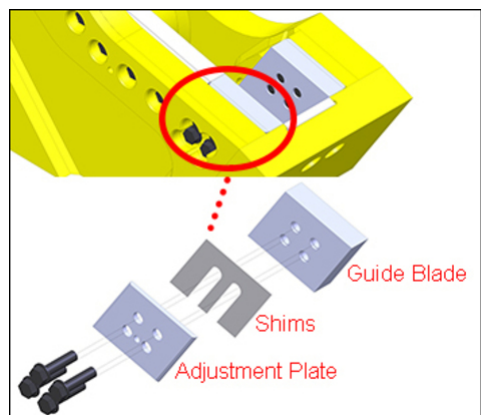


Shim

To shim the guide blades, slowly close the jaw so the upper piercing blades begin to bypass the guide blades. Stop the jaw and check the gap between the guide blades and piercing blades. Cycle the jaws slowly, stopping at several points along the piercing blades to check the gap each time.



If the gap is out of spec, install shims by loosening the blade bolts and sliding shims between the guide blade and adjustment plate. Retorque the bolts and recheck the gap. If more than 0.075" (2 mm) of shims are required to keep the gap within tolerance, the blade must be replaced.



Replace

To replace a guide blade, simply remove the blade and shims and install a new blade with no shims. Then check the blade gap and shim as needed.

Rotate

Guide blades must be rotated when they are worn to a 1/8" (3 mm) radius. If the blade faces are excessively worn, the blades cannot be rotated. Excessively worn blades will have uneven surfaces that, when placed upon guide blade seat surfaces, will not be supported and will break, resulting in blade seat damage.

To rotate a guide blade, remove the blade bolts, guide blade and shims. Rotate the blade end-for-end or side-to-side and reinstall and torque the bolts. Then check the gap and shim if necessary.

Adjustment Plates

Guide blade adjustment plates are custom machined for each blade seat and position sensitive. The alignment holes in the plate must match the alignment holes in the individual seats.

Adjustment plates should be replaced when blade gaps are no longer even or when the plates are damaged or extremely worn. We advise measuring for the new plates when you are replacing. Contact [Genesis Parts](#) or [Service](#) for assistance with new measurements.

Have blade maintenance questions? See the [Safety & Operator's Manual](#) for your specific attachment or contact Tim at 218-349-5755, talseth@genesisattachments.com