



TIM'S TECH TIPS



Rotation Flow Controls

Rotation flow controls are connected to the rotation circuit bulkhead fittings that go through the side of the rotator head. They fine tune rotational speed in revolutions per minute (rpm).

The flow from the excavator must be within prescribed gallons per minute, and the rotation flow controls reduce it from there. They are pressure compensated cartridges, so supplying too much pressure or flow will cause them to act erratically, chatter or lock up completely. They are factory set at 3-4 rpm to protect the circuit from breakage when reversing flow and rotation direction.

Backing out the adjustment stem of the flow control valve will increase rotation speed if there's enough flow from the excavator circuit to spin the motor faster. Turning it in will slow rotation speed. Adjusting the rotation speed above 4 rpm can negatively affect the motor and/or gearbox cover.

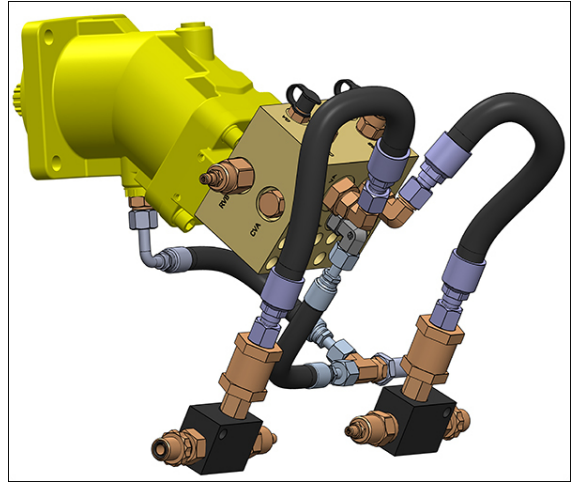
Attachments working on the ground are typically run at a higher rpm, while demolition or high-reach applications are slower to provide better control while operating in the air.

The cartridges themselves rarely fail or need adjustment. If you feel there may be an issue with a cartridge, you can switch them from one side to the other. If the problem still exists, there may be an issue, or it may simply need adjusting. Remember to snug the jam nut after adjusting so it stays where it's set.

If you have any rotation circuit questions, don't hesitate to contact Tim at 218-349-5755,

talseth@genesisattachments.com, or Loren at 715-919-8316,

llagesse@genesisattachments.com.



GXT 665 Rotation Circuit Assembly

